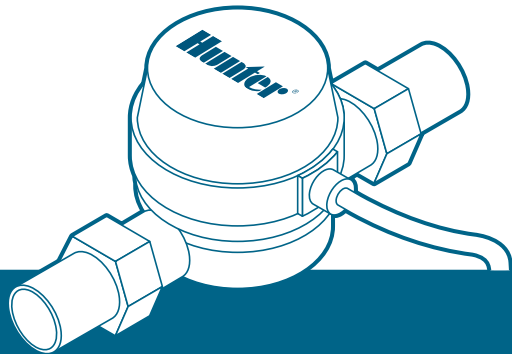


# HC Flow Meter

*HYDRAWISE-READY QUICK START GUIDE*

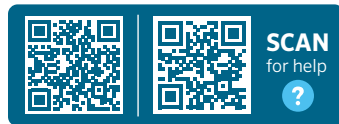


**Hunter**<sup>®</sup>

# Table of Contents

---

- 3** Box Contents
- 4** HC Flow Meter Measuring
- 5** Planning
- 7** Installing
- 9** Configuring
- 10** Troubleshooting

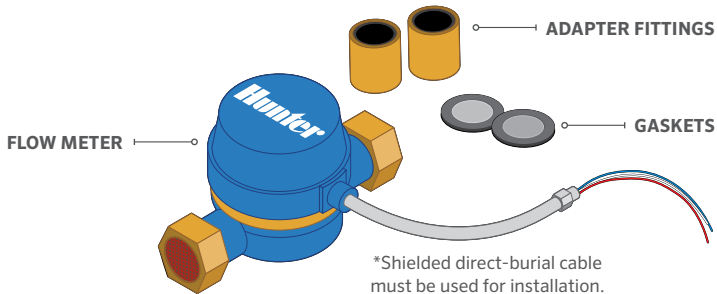


[hunter.help/hydrawise](https://hunter.help/hydrawise)  
[hunter.help/hcflow](https://hunter.help/hcflow)

---

## HC Support

Thank you for purchasing the Hunter HC Flow Meter. In this Quick Start Guide, you'll learn how to install and configure your flow meter. If you need Hydrawise® Software support or help with your Hydrawise account, visit [hunter.help/hydrawise](https://hunter.help/hydrawise). For specification information, refer to [hunter.help/hcflow](https://hunter.help/hcflow).



PART NUMBER	DESCRIPTION
10021300SP	Qty. 10, HC-075-FLOW Spare Gaskets
10021400SP	Qty. 10, HC-100-FLOW Spare Gaskets
10021500SP	Qty. 2, HC-150-FLOW Spare Gaskets
10021600SP	Qty. 2, HC-200-FLOW Spare Gaskets



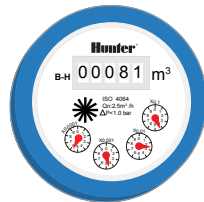
**Note:** This product is intended for use with professional-grade materials. It must be installed by a licensed irrigation contractor or licensed electrician.

# HC Flow Meter Measuring

---

## The flow meter consists of two parts:

- 1. Flow meter body:** The flow meter body contains an analogue dial for manual readings as follows. Your flow meter will have three wires protruding from the body. The wires need to be connected to the sensor inputs on the controller for readings in the software application. In all models, only two wires (blue and white) are used.
- 2. Adapter:** Each flow meter has an adapter to allow connection to your irrigation system.



DIAL MARKING	MEASUREMENT UNIT
m <sup>3</sup>	1,000 l
X0.1	100 l
X0.01	10 l
X0.001	1 l
X0.0001	0.1 l



**Note:** The flow meter displays litres.

---

**Planning is an important step in the successful installation of your Hunter flow meter and the reliable operation of your irrigation system.**

**3. Flow meter location:** Flow meters are installed between the master valve and the zone valves. To avoid false alerts, there should be no water taps or other uncontrolled water use on the downstream side of the flow meter. If all solenoids connected to the controller are not grouped together, it may be necessary to install more than one flow meter. For proper installation and optimal water flow, use the chart below when determining pipe length. The pipe bringing water into the flow meter needs to be 10 times longer than the width of the pipe. The pipe carrying water away from the meter needs to be 5 times longer than the width of the pipe.

PIPE	10X-BEFORE	5X-AFTER
20 mm	200 mm	100 mm
25 mm	250 mm	125 mm
40 mm	400 mm	200 mm
50 mm	500 mm	250 mm



**Note:** Measurements in the chart are for minimum pipe length.

# Planning

---

**4. Cable (shielded direct-burial cable must be used):** Two-wire cable is required. The cable gauge is determined by the total length of cable between the controller and the flow meter. The cable should consist of two dedicated wires and must not be in the same conduit or cable bunch as the solenoid wires. Do not share the common wire of the solenoids with the common wire of the sensors.

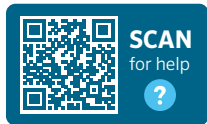
## Flow Meter Cable Length Chart

WIRE SIZE	MAX LENGTH
0.75 mm <sup>2</sup>	75 m
1.0 mm <sup>2</sup>	300 m



**Note:** Shielded direct-burial cable is commonly available. Manufacturers include Paige Electric and Regency Wire.

---

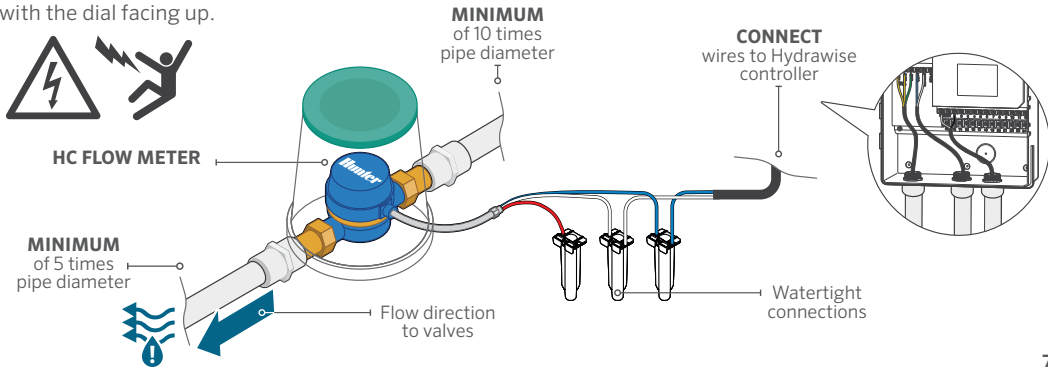


[hunter.help/winterization](https://hunter.help/winterization)

Flow meters can be potentially damaged by blowout winterisation. Either remove the flow meter prior to winterisation or use a bypass.

## Use the following instructions if your Hunter controller with Hydrawise Software has already been installed.

- 1. Install the flow meter:** The body of the flow meter includes an arrow-shaped marking that indicates the direction of the water flow. The flow meter must be installed in the correct orientation with the water flowing in the same direction as the arrow on the flow meter body. All HC Flow Meters must be installed horizontally with the dial facing up.



# Installing

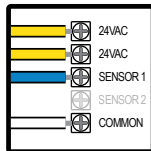
**2. Connect flow meter wire:** Two-wire cable is required to connect your flow meter. It must be solely designated for the flow meter and not shared with the common wire of the valves or other sensors. The cable gauge is determined by the total length of cable between the controller and the flow meter. The general rule is that 0.75 mm<sup>2</sup> wire is good for a run of up to 75 m. Connect the wires to your Hydrowise-enabled Hunter controller.

WIRE COLOUR	SENSOR TERMINAL BLOCK
White	Common
Blue	Sen 1 or Sen 2
Red	<b>Not used:</b> Wires should be capped with waterproof splice

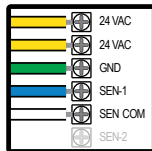
\* Shield and bare wire should be connected to the controller ground terminal if available.

**Note:** All wire connections should be done using waterproof connectors, such as 3M 316IR or 3M DBY.

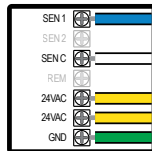
## HC



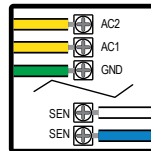
## PRO-HC



## HCC

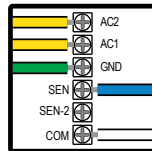


## HPC



*Controllers manufactured before December 2022*

## HPC



*Controllers manufactured after January 2023*



## Use your Hydrawise account to complete your flow meter configuration.

- 1. Log in to your account:** Enter your login information.
- 2. Create a flow sensor:** It's important to select the correct model when configuring your flow meter in the Hydrawise App. Choosing the wrong model may result in false alerts within the software.

HC FLOW METER SELECTION CHART		
METER SIZE	M <sup>3</sup>	M <sup>3</sup> PULSE RATE
20 mm	20 mm flow meter	1 pulse per 1 l
25 mm	25 mm flow meter	1 pulse per 10 l
40 mm	40 mm flow meter	1 pulse per 10 l
50 mm	50 mm flow meter	1 pulse per 10 l

- 3. Assign zones to the flow sensor:** Refer to [hunter.help/hydrawise](https://hunter.help/hydrawise) for app/software setup information.

# Troubleshooting

---

Need more helpful information on your product? Find tips on installation, controller programming, and more using the resources below.



[hunter.help/hydrawise](https://hunter.help/hydrawise)



[hydrawise.com/flowmeterinstall](https://hydrawise.com/flowmeterinstall)

---

---

---

---

---

---

---

---

---

---

---

---

---

**RESIDENTIAL & COMMERCIAL IRRIGATION** | *Built on Innovation®*

Learn more. Visit [hunterindustries.com](https://hunterindustries.com)

© 2023 Hunter Industries Inc. Hunter, the Hunter logo, and other marks are trademarks of Hunter Industries Inc., registered in the U.S. and certain other countries.

**Hunter®**

LIT-694 QG FlowMeter EM E 5/23