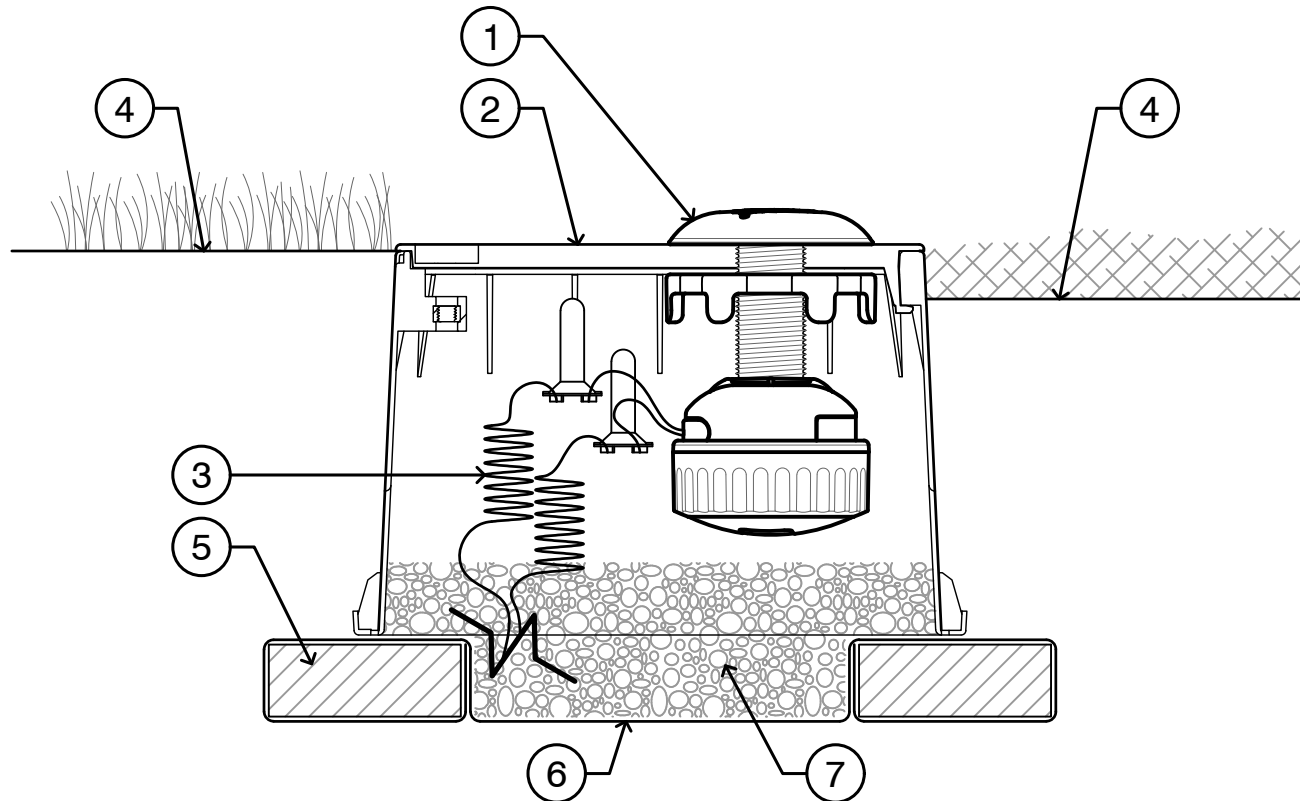


LEGEND

- ① HUNTER WIRELESS VALVE LINK (WVL) PER PLAN
- ② HUNTER MULTI-PURPOSE BOX WITH LID (MB-0811) PER PLAN: DRILL 1.5" [38MM] HOLE IN LID
- ③ 18"-24" [50 CM] COILED WIRE TO REMOTE CONTROL VALVE AND DC LATCHING SOLENOID WITH WATERPROOF CONNECTORS
- ④ FINISHED GRADE
- ⑤ COMMON HALF BRICK (2) EACH SHORT END
- ⑥ FILTER FABRIC: WRAP TWICE AROUND BRICK SUPPORTS
- ⑦ GRAVEL BASE: DEPTH AS SPECIFIED



00

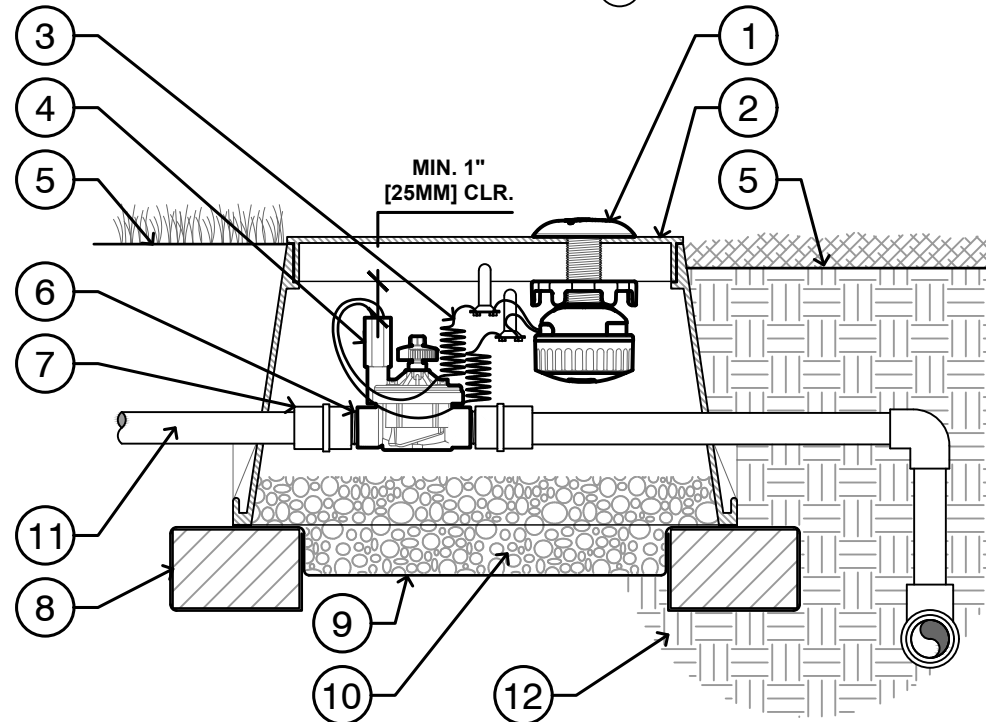
**WIRELESS VALVE LINK IN MULTI-PURPOSE BOX**

N.T.S.

C-WVL-01 | [www.hunterindustries.com](http://www.hunterindustries.com) | **Hunter**

LEGEND

- ① HUNTER WIRELESS VALVE LINK (WVL) PER PLAN
- ② IRRIGATION VALVE BOX PER PLAN:  
HEAT STAMP LID WITH 'RCV' IN 2" LETTERS,  
DRILL 1.5" [38MM] HOLE
- ③ 18"-24" [50 CM] COILED WIRE TO DC LATCHING  
SOLENOID WITH WATERPROOF CONNECTORS
- ④ HUNTER REMOTE CONTROL VALVE (ICV)  
WITH DC LATCHING SOLENOID
- ⑤ FINISHED GRADE
- ⑥ SCH. 80 CLOSE NIPPLE EACH SIZE:  
MATCH SIZE TO VALVE
- ⑦ PVC SLIP X FPT ADAPTOR EACH SIDE
- ⑧ BRICK SUPPORTS (4)
- ⑨ FILTER FABRIC: WRAP TWICE AROUND BRICK  
SUPPORTS
- ⑩ GRAVEL BASE: DEPTH AS SPECIFIED
- ⑪ IRRIGATION LATERAL
- ⑫ MAINLINE AND FITTINGS



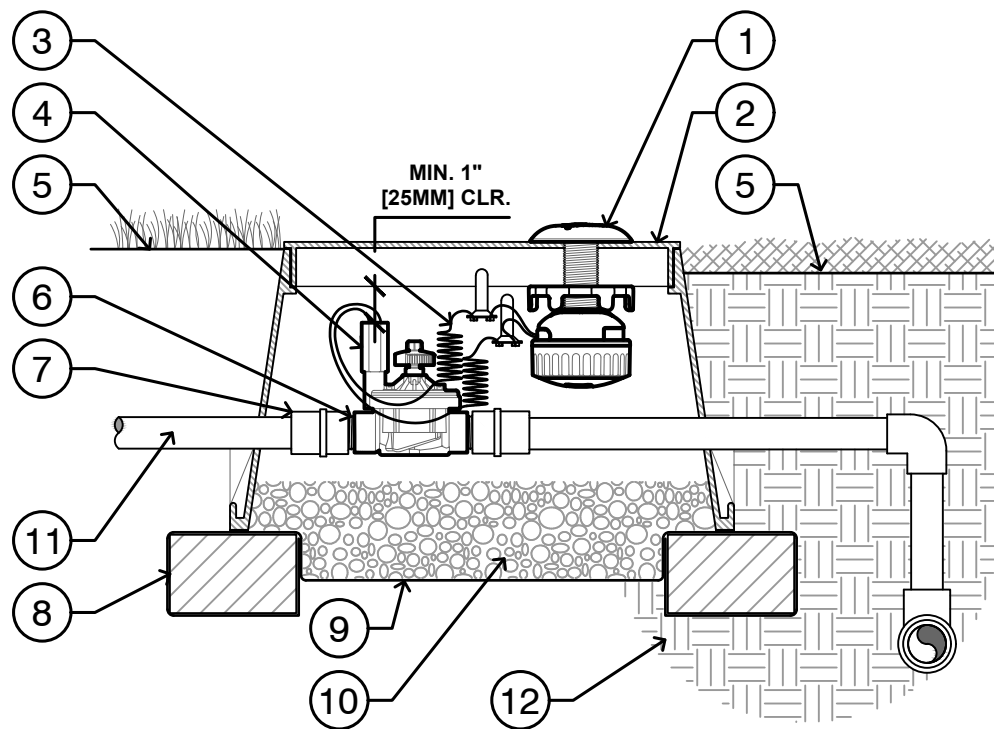
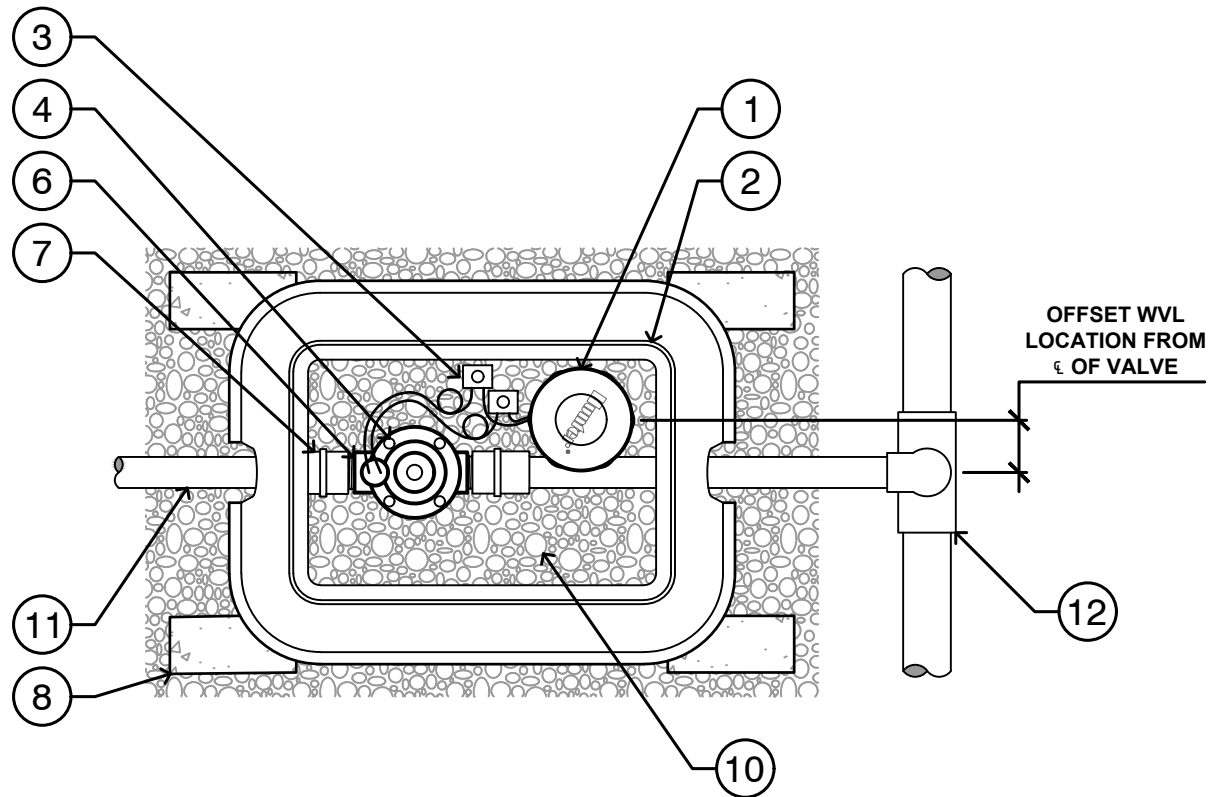
00

**WIRELESS VALVE LINK WITH ICV VALVE**

N.T.S.

**LEGEND**

- |  |  |
|--|--|
| ① HUNTER WIRELESS VALVE LINK (WVL) PER PLAN  | ⑥ SCH. 80 CLOSE NIPPLE EACH SIZE:<br>MATCH SIZE TO VALVE |
| ② IRRIGATION VALVE BOX PER PLAN:<br>HEAT STAMP LID WITH 'RCV' IN 2" LETTERS,<br>DRILL 1.5" [38MM] HOLE | ⑦ PVC SLIP X FPT ADAPTOR EACH SIDE                       |
| ③ 18"-24" [50 CM] COILED WIRE TO DC LATCHING<br>SOLENOID WITH WATERPROOF CONNECTORS                    | ⑧ BRICK SUPPORTS (4)                                     |
| ④ HUNTER REMOTE CONTROL VALVE (ICV)<br>WITH DC LATCHING SOLENOID                                       | ⑨ FILTER FABRIC: WRAP TWICE AROUND BRICK<br>SUPPORTS     |
| ⑤ FINISHED GRADE   | ⑩ GRAVEL BASE: DEPTH AS SPECIFIED                        |
|  | ⑪ IRRIGATION LATERAL                                     |
|  | ⑫ MAINLINE AND FITTINGS                                  |

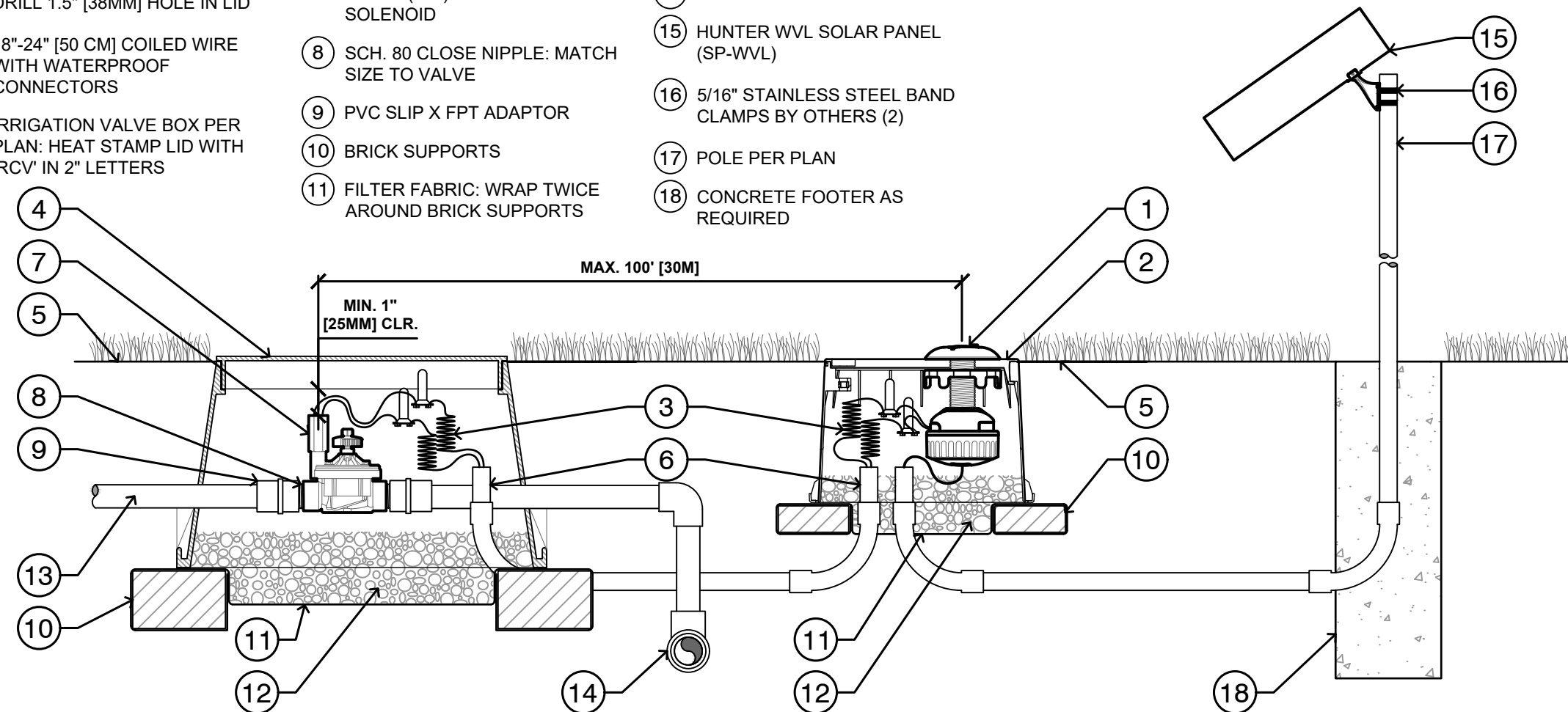


**NOTES**

1. OFFSET HUNTER WIRELESS VALVE LINK (WVL) FROM CENTER OF VALVE BOX FOR ADDITIONAL CLEARANCE FROM REMOTE CONTROL VALVE.
2. REFER TO THE HUNTER INSTALLATION GUIDE FOR FURTHER INSTRUCTIONS.

**LEGEND**

- |   |   |   |
|---|---|---|
| ① HUNTER WIRELESS VALVE LINK (WVL) PER PLAN   | ⑤ FINISHED GRADE  | ⑫ GRAVEL BASE: DEPTH AS SPECIFIED                 |
| ② HUNTER MULTI-PURPOSE BOX WITH LID (MB-0811) PER PLAN: DRILL 1.5" [38MM] HOLE IN LID | ⑥ PVC CONDUIT WITH SWEEP                                      | ⑬ IRRIGATION LATERAL                              |
| ③ 18"-24" [50 CM] COILED WIRE WITH WATERPROOF CONNECTORS                              | ⑦ HUNTER REMOTE CONTROL VALVE (ICV) WITH DC LATCHING SOLENOID | ⑭ MAINLINE AND FITTINGS                           |
| ④ IRRIGATION VALVE BOX PER PLAN: HEAT STAMP LID WITH 'RCV' IN 2" LETTERS              | ⑧ SCH. 80 CLOSE NIPPLE: MATCH SIZE TO VALVE                   | ⑮ HUNTER WVL SOLAR PANEL (SP-WVL)                 |
|   | ⑨ PVC SLIP X FPT ADAPTOR                                      | ⑯ 5/16" STAINLESS STEEL BAND CLAMPS BY OTHERS (2) |
|   | ⑩ BRICK SUPPORTS  | ⑰ POLE PER PLAN                                   |
|   | ⑪ FILTER FABRIC: WRAP TWICE AROUND BRICK SUPPORTS             | ⑱ CONCRETE FOOTER AS REQUIRED                     |



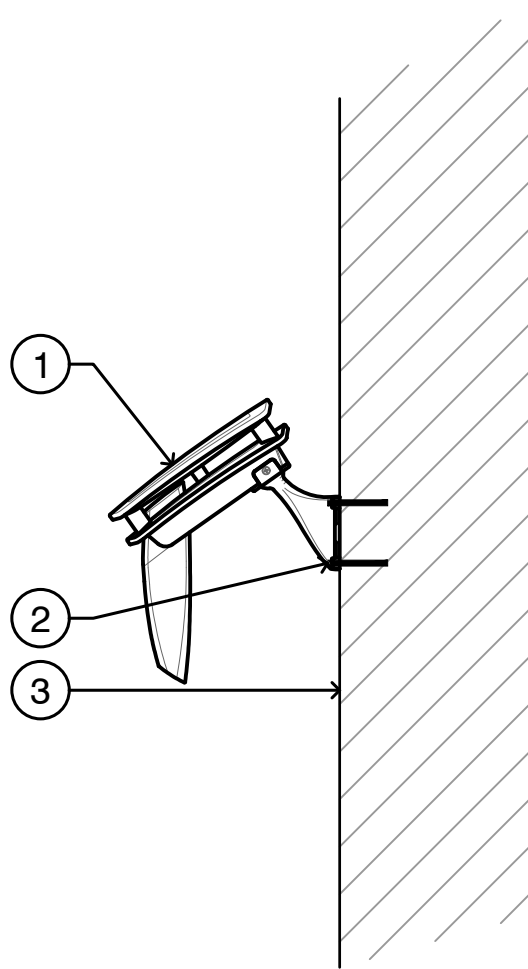
**NOTES**

1. LOCATE SOLAR PANEL AWAY FROM TREES AND OBSTACLES, ALIGN FOR MAXIMUM SUN EXPOSURE.
2. MAXIMUM LENGTH 40' [12M] FROM SOLAR PANEL TO WIRELESS VALVE LINK.
3. MAXIMUM DISTANCE 100' [30M] BETWEEN WIRELESS VALVE LINK AND DC LATCHING SOLENOID.
4. REFER TO THE HUNTER INSTALLATION GUIDE FOR FURTHER INSTRUCTIONS.

00

**WIRELESS VALVE LINK IN MULTI-PURPOSE BOX WITH ICV VALVE AND SOLAR PANEL**

N.T.S.



#### LEGEND

- ① HUNTER WIRELESS SOLAR REPEATER (RPT)
- ② FASTENERS OR CONCRETE ANCHORS BY OTHERS (4)
- ③ ADJACENT SURFACE TO MOUNT PER PLAN

#### NOTES

1. ONE REPEATER PER CONTROLLER.
2. LOCATE REPEATER AWAY FROM TREES AND OBSTACLES, ALIGN SOLAR PANEL FOR MAXIMUM SUN EXPOSURE.
3. ROTATE ANTENNA TO THE VERTICAL POSITION; ANTENNA MAY BE INSTALLED IN THE UP OR DOWN POSITION.
4. REFER TO THE HUNTER INSTALLATION GUIDE FOR FURTHER INSTRUCTIONS.

00

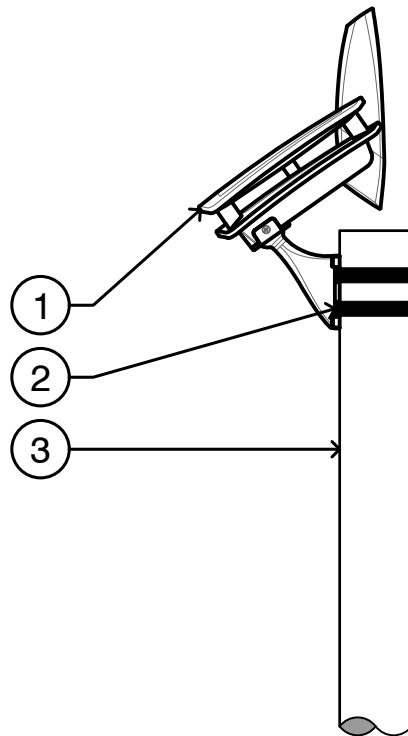
## WIRELESS SOLAR REPEATER: WALL MOUNT

N.T.S.

C-WVL-RPT-01 | [www.hunterindustries.com](http://www.hunterindustries.com) | **Hunter**

LEGEND

- ① HUNTER WIRELESS SOLAR REPEATER (RPT)
- ② 5/16" STAINLESS STEEL BAND CLAMPS BY OTHERS (2)
- ③ POLE PER PLAN



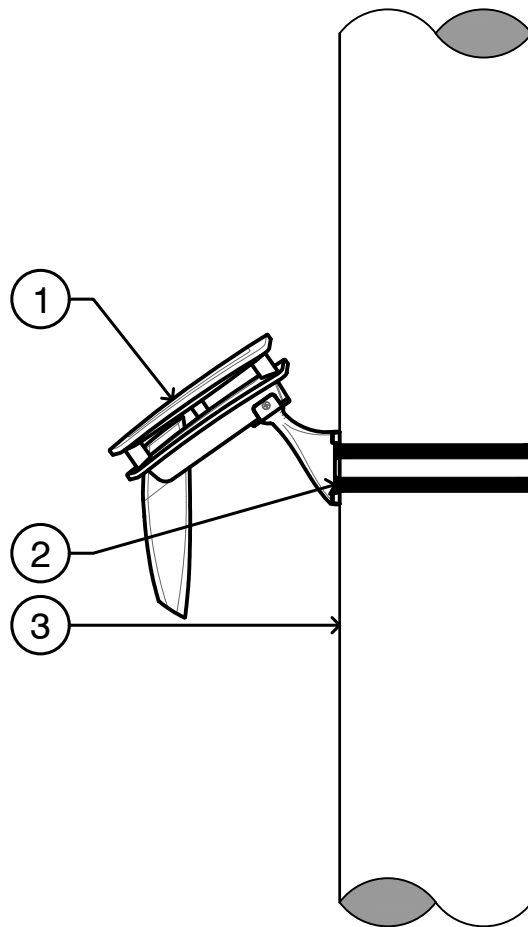
NOTES

1. ONE REPEATER PER CONTROLLER.
2. LOCATE REPEATER AWAY FROM TREES AND OBSTACLES, ALIGN SOLAR PANEL FOR MAXIMUM SUN EXPOSURE.
3. ROTATE ANTENNA TO THE VERTICAL POSITION; ANTENNA MAY BE INSTALLED IN THE UP OR DOWN POSITION.
4. REFER TO THE HUNTER INSTALLATION GUIDE FOR FURTHER INSTRUCTIONS.

00

**WIRELESS SOLAR REPEATER: POLE MOUNT**

N.T.S.



#### LEGEND

- ① HUNTER WIRELESS SOLAR REPEATER (RPT)
- ② 5/16" [8 MM] STAINLESS STEEL BAND CLAMPS BY OTHERS (2)
- ③ UTILITY OR LIGHTING POLE BY OTHERS

#### NOTES

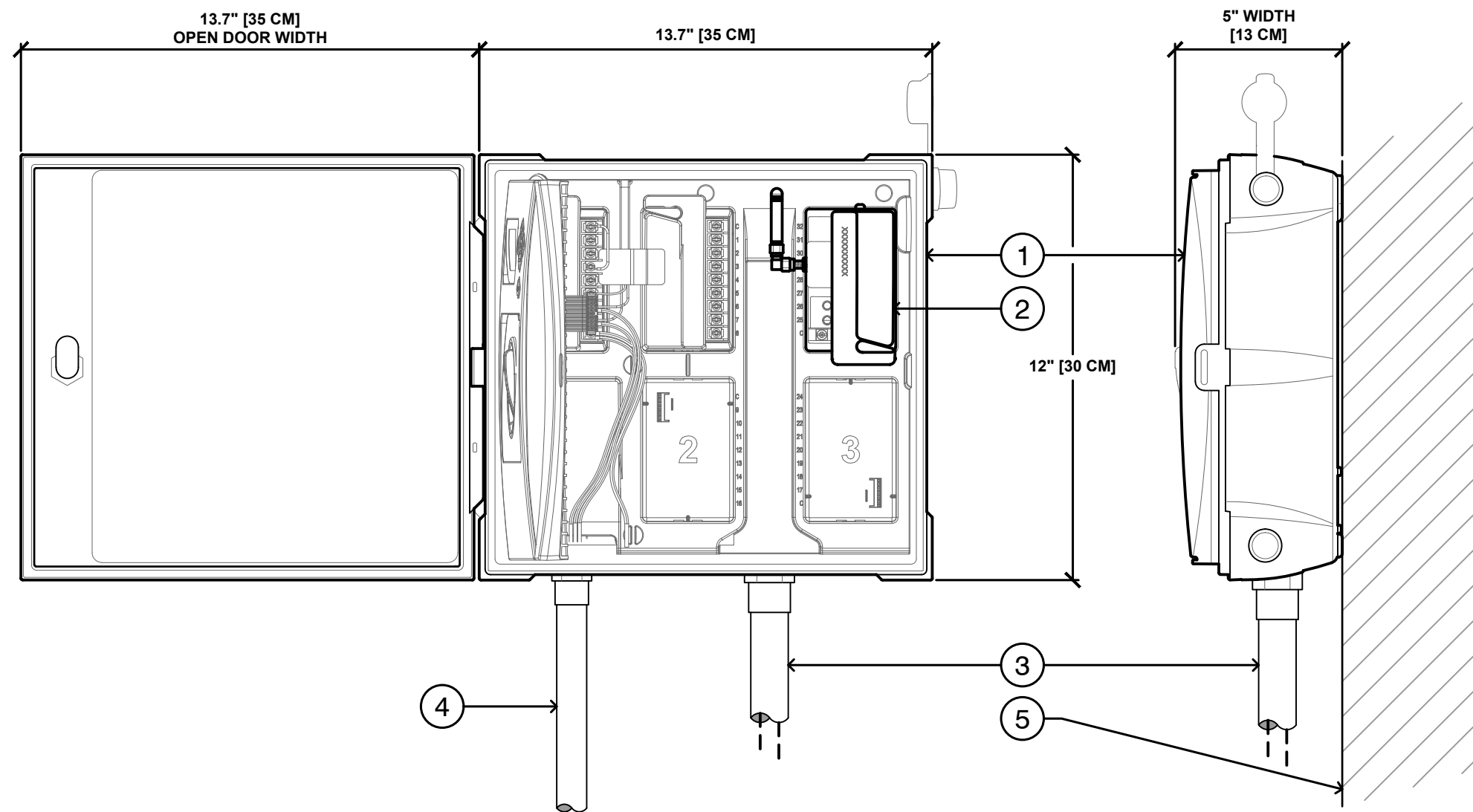
1. ONE REPEATER PER CONTROLLER.
2. LOCATE REPEATER AWAY FROM TREES AND OBSTACLES, ALIGN SOLAR PANEL FOR MAXIMUM SUN EXPOSURE.
3. ROTATE ANTENNA TO THE VERTICAL POSITION; ANTENNA MAY BE INSTALLED IN THE UP OR DOWN POSITION.
4. REFER TO THE HUNTER INSTALLATION GUIDE FOR FURTHER INSTRUCTIONS.

00

## WIRELESS SOLAR REPEATER: POLE MOUNT

N.T.S.

C-WVL-RPT-03 | [www.hunterindustries.com](http://www.hunterindustries.com) | **Hunter**



**LEGEND**

- ① HUNTER IRRIGATION CONTROLLER (I2C-800-PL OR HCC-800-PL) PER PLAN
- ② HUNTER WIRELESS VALVE OUTPUT MODULE (WVOM)
- ③ IRRIGATION CONTROL WIRE IN CONDUIT: SIZE AND TYPE PER LOCAL CODES
- ④ ELECTRICAL SUPPLY CONDUIT: CONNECT TO POWER SOURCE, J-BOX INSIDE CONTROLLER
- ⑤ ADJACENT SURFACE TO MOUNT PER PLAN

**NOTES**

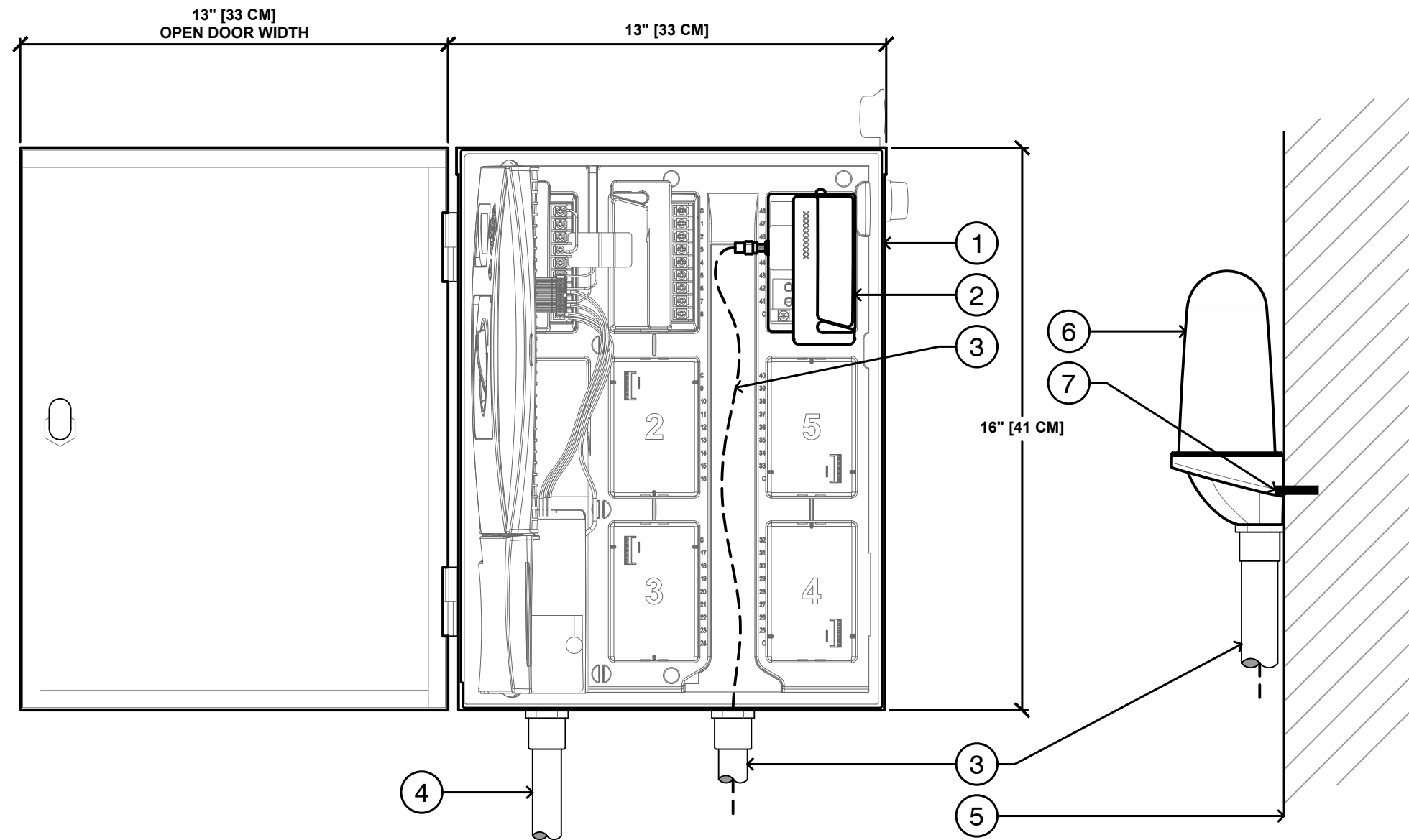
1. CONTROLLER ACCEPTS 120 VOLTS A.C. OR 230 VOLTS A.C. (INTERNATIONAL MODEL).
2. MOUNT CONTROLLER LCD SCREEN AT EYE LEVEL, CONTROLLER SHALL BE HARD-WIRED TO GROUNDED 110 VAC POWER SOURCE.
3. REFER TO THE HUNTER INSTALLATION GUIDE FOR FURTHER INSTRUCTIONS.

00

**IRRIGATION CONTROLLER: WIRELESS VALVE OUTPUT MODULE, PLASTIC ENCLOSURE**

N.T.S.





**LEGEND**

- ① HUNTER IRRIGATION CONTROLLER (I2C-800-M OR HCC-800-M) PER PLAN
- ② HUNTER WIRELESS VALVE OUTPUT MODULE (WVOM)
- ③ ANTENNA CABLE IN CONDUIT: MAXIMUM LENGTH 9' [3M]
- ④ ELECTRICAL SUPPLY CONDUIT: CONNECT TO POWER SOURCE, J-BOX INSIDE CONTROLLER
- ⑤ ADJACENT SURFACE TO MOUNT PER PLAN
- ⑥ HUNTER WVOM ANTENNA EXTENSION KIT (ANTEXTKIT)
- ⑦ FASTENERS OR CONCRETE ANCHORS BY OTHERS (2)

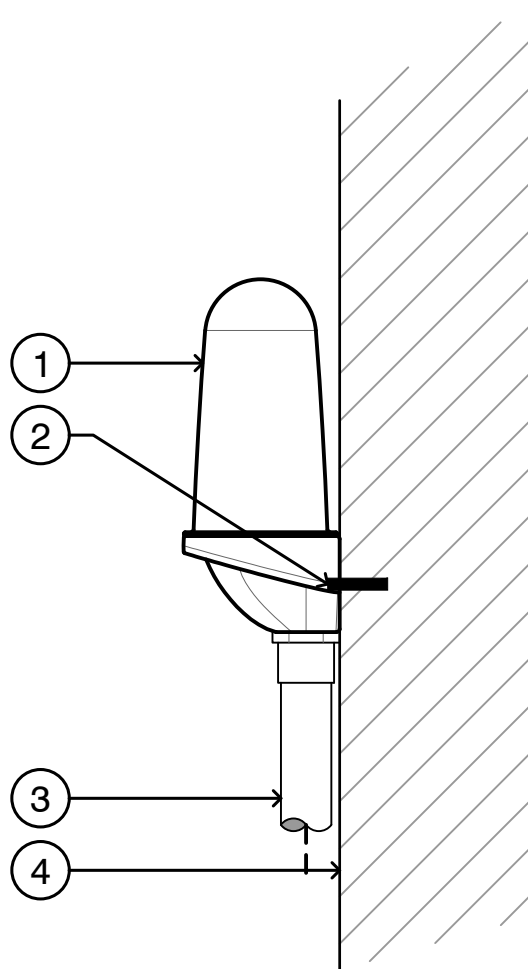
**NOTES**

1. WIRELESS VALVE OUTPUT MODULE ANTENNA EXTENSION KIT REQUIRED FOR METAL ENCLOSURE.
2. CONTROLLER ACCEPTS 120 VOLTS A.C. OR 230 VOLTS A.C. (INTERNATIONAL MODEL).
3. MOUNT CONTROLLER LCD SCREEN AT EYE LEVEL, CONTROLLER SHALL BE HARD-WIRED TO GROUNDED 110 VAC POWER SOURCE.
4. REFER TO THE HUNTER INSTALLATION GUIDE FOR FURTHER INSTRUCTIONS.

00

**IRRIGATION CONTROLLER: WIRELESS VALVE OUTPUT MODULE, METAL ENCLOSURE**

N.T.S.



LEGEND

- ① HUNTER WVOM ANTENNA EXTENSION KIT (ANTEXTKIT)
- ② FASTENERS OR CONCRETE ANCHORS BY OTHERS (2)
- ③ ANTENNA CABLE IN CONDUIT TO CONTROLLER WIRELESS VALVE OUTPUT MODULE: MAXIMUM LENGTH 9' [3M]
- ④ ADJACENT SURFACE TO MOUNT PER PLAN

NOTES

- 1. LOCATE ANTENNA EXTENSION AWAY FROM TREES AND OBSTACLES.
- 2. MAXIMUM LENGTH 9' [3M] TO WIRELESS VALVE OUTPUT MODULE.
- 3. REFER TO THE HUNTER INSTALLATION GUIDE FOR FURTHER INSTRUCTIONS.



**WVOM ANTENNA EXTENSION KIT (ANTEXTKIT)**

N.T.S.