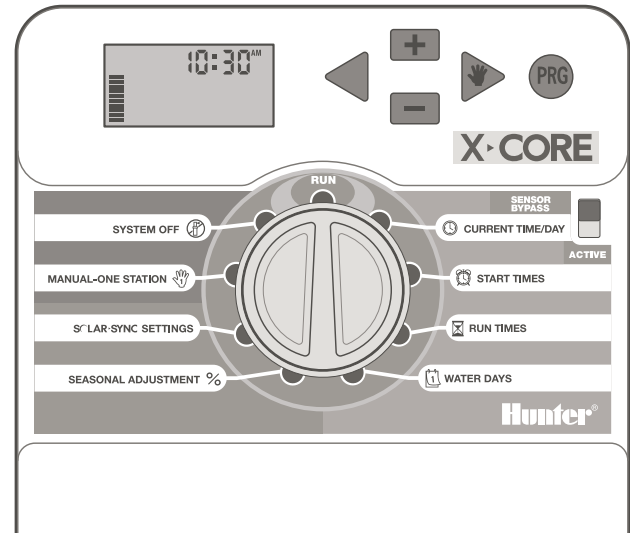
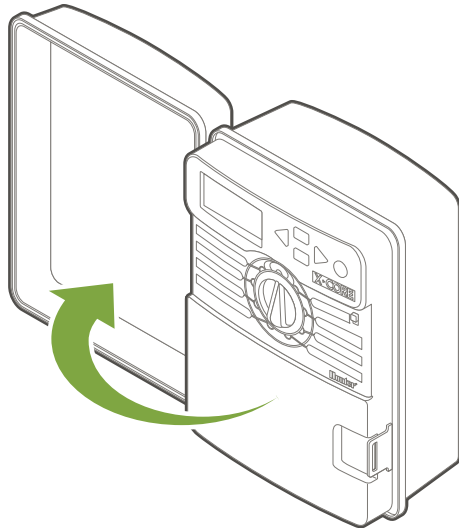
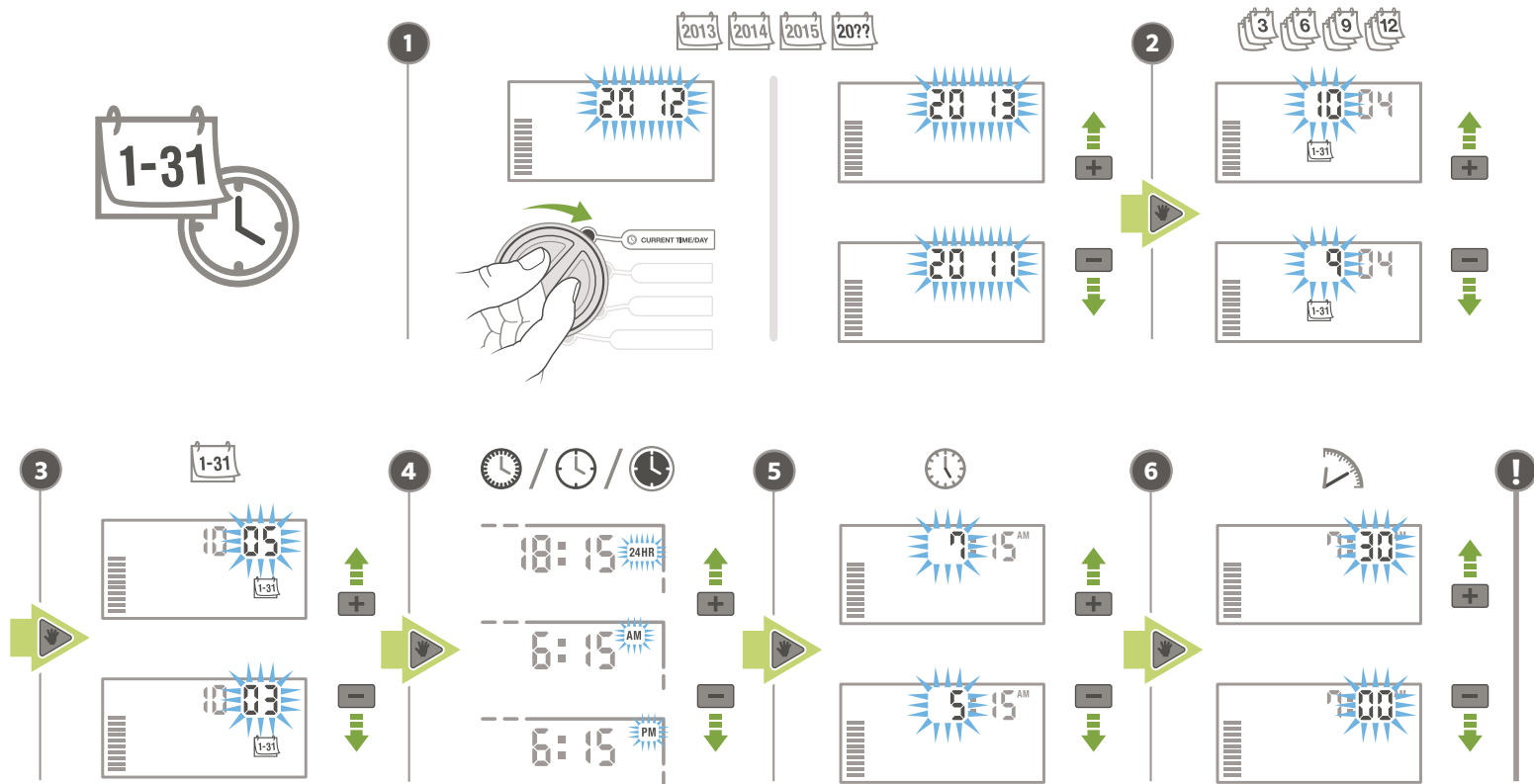
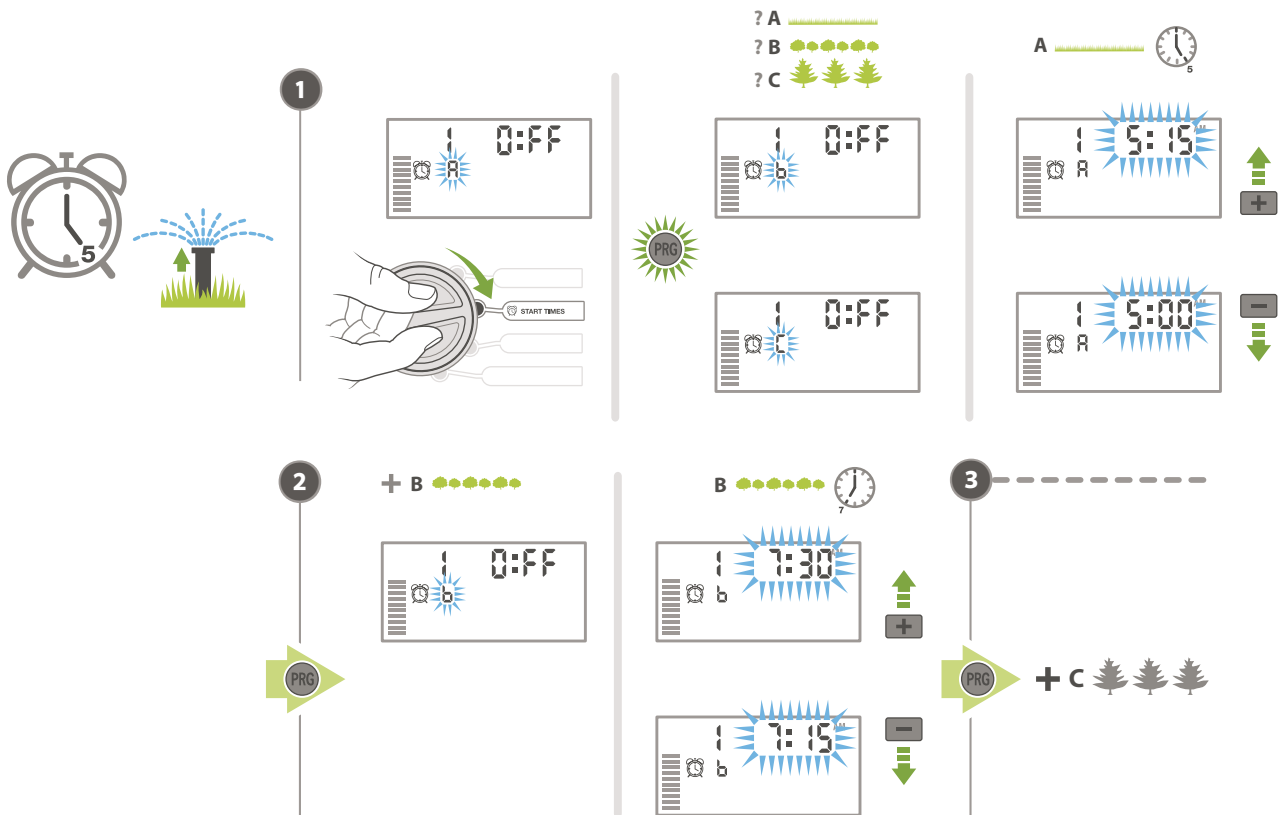
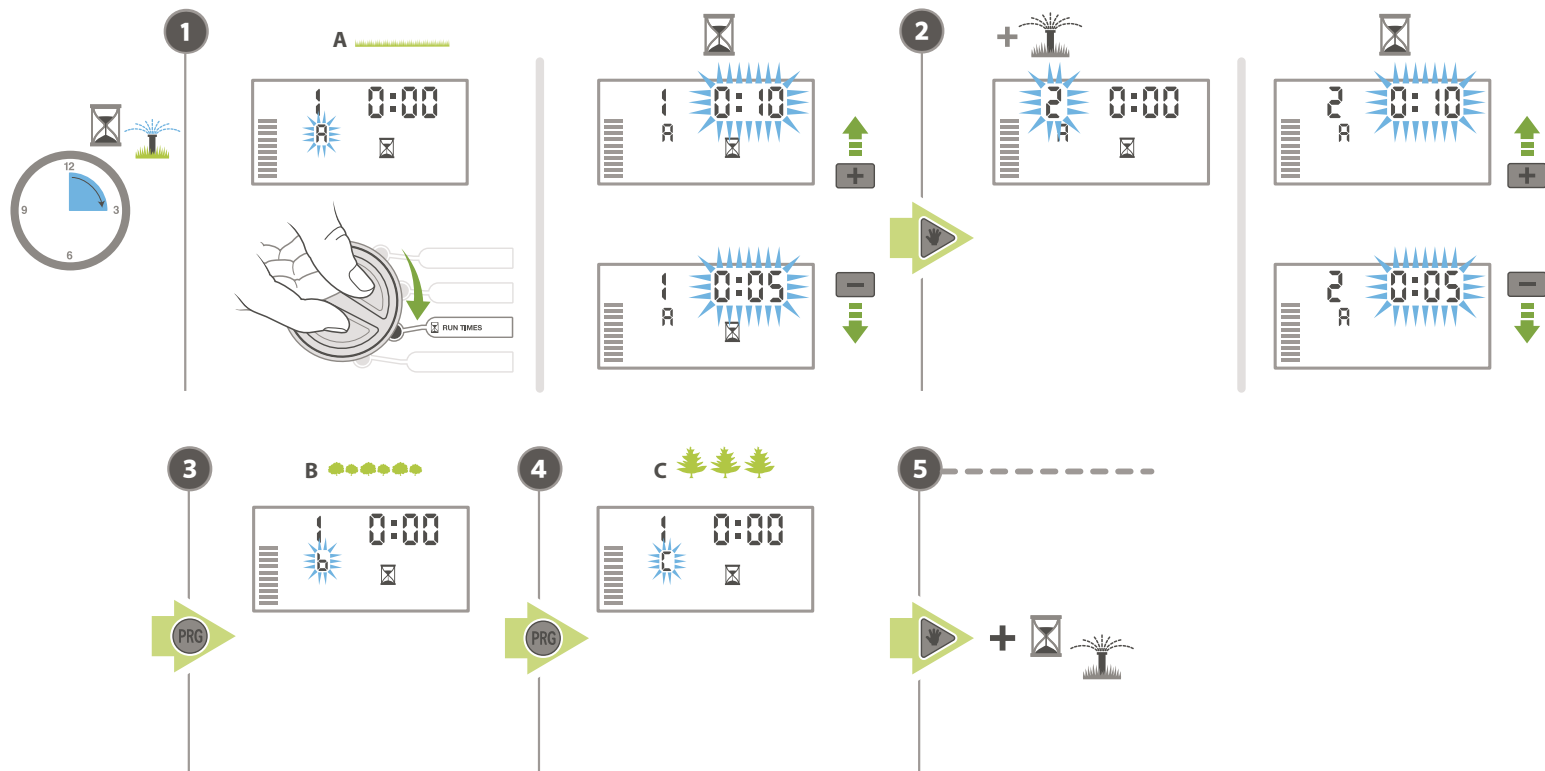


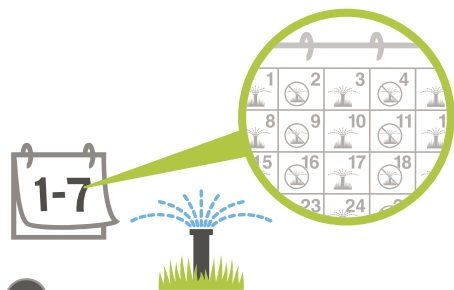
X-CORE®



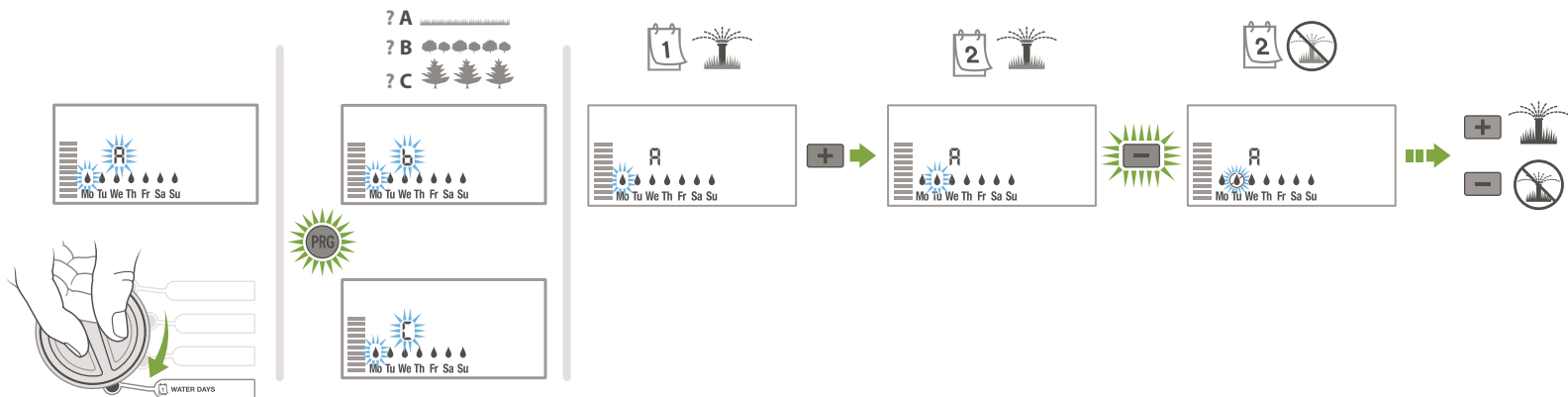


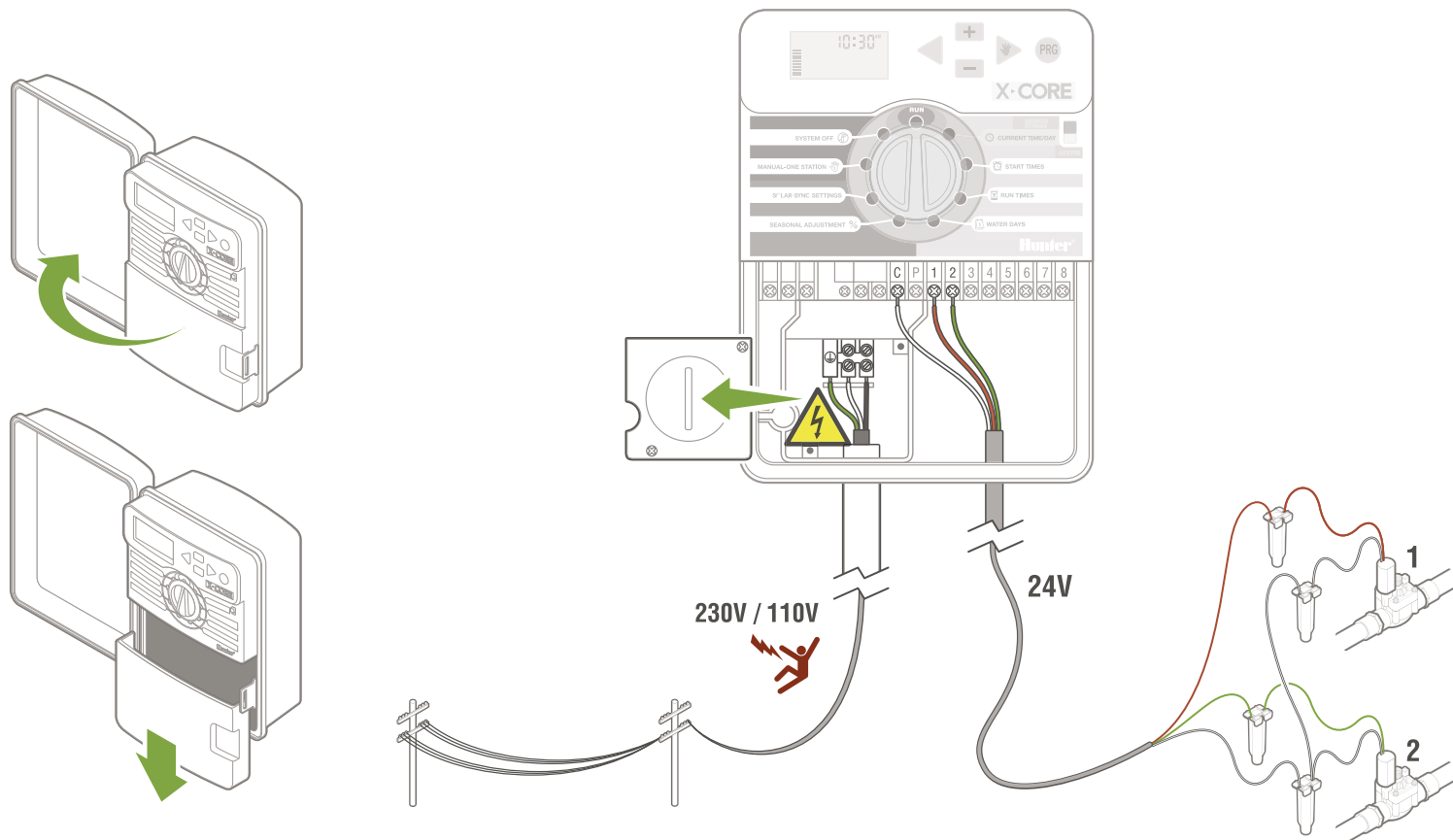


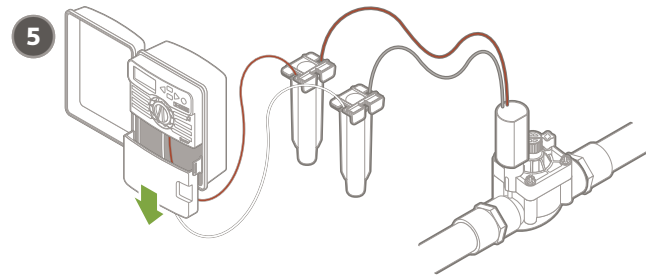
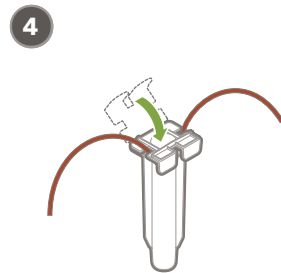
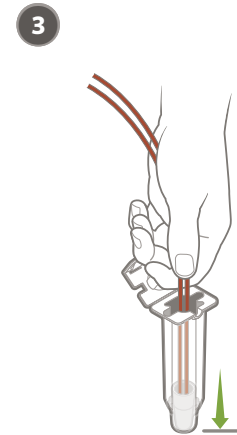
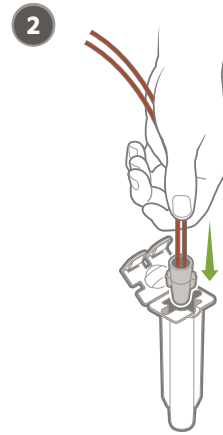
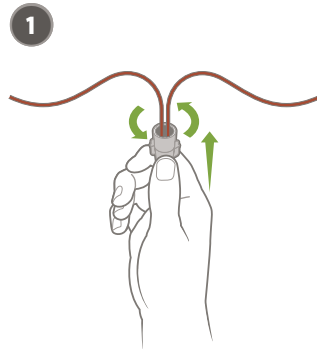


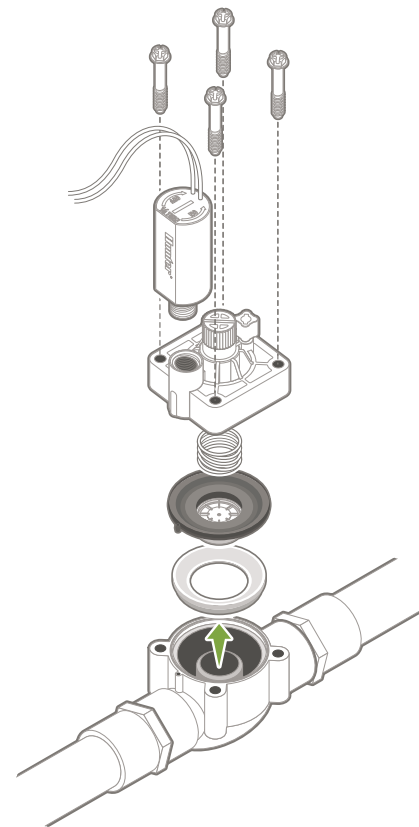
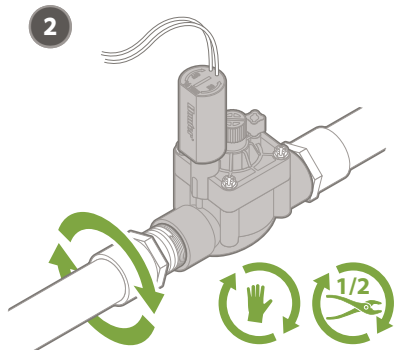
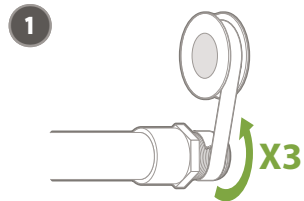
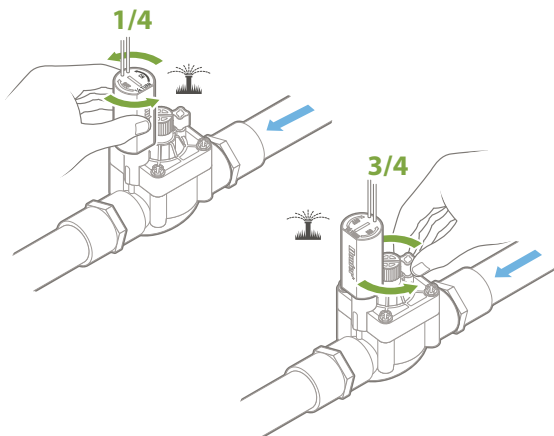
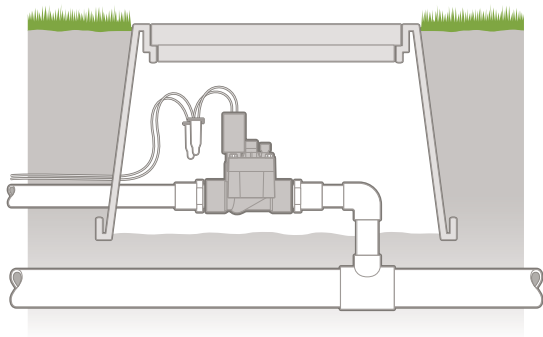


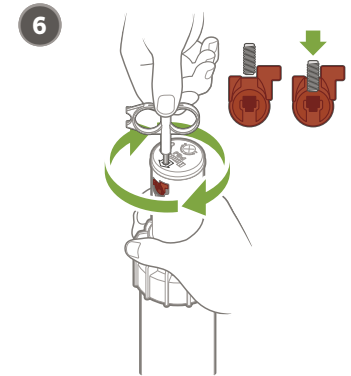
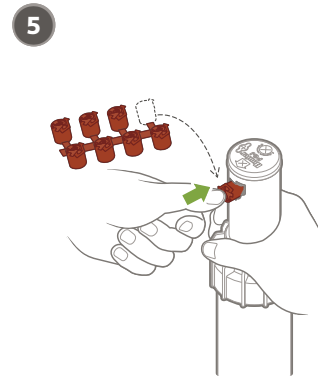
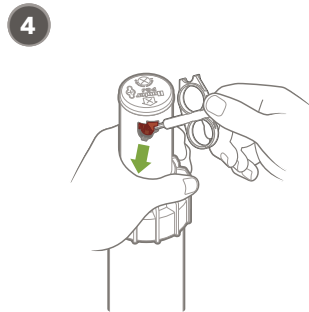
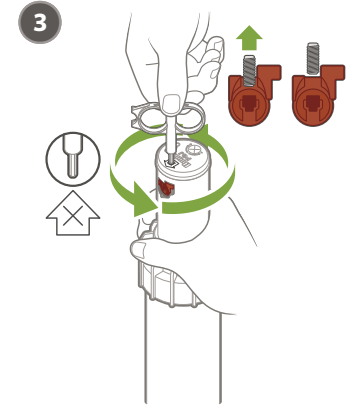
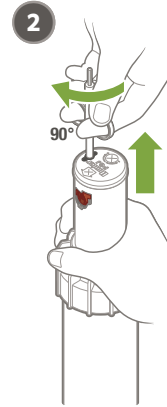
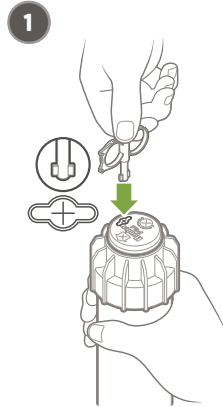
1

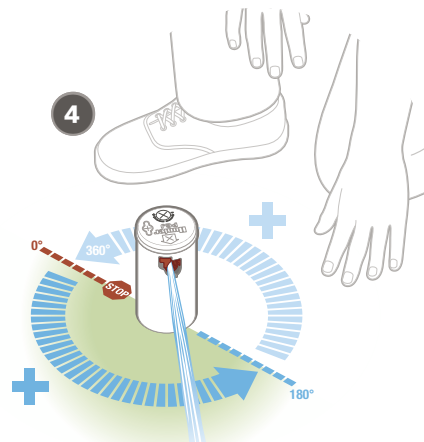
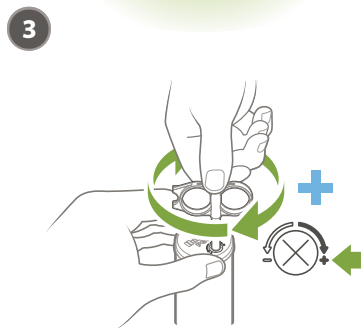
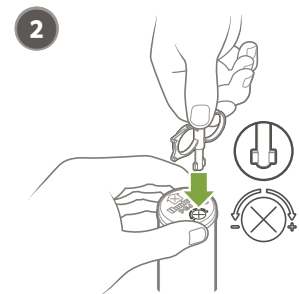
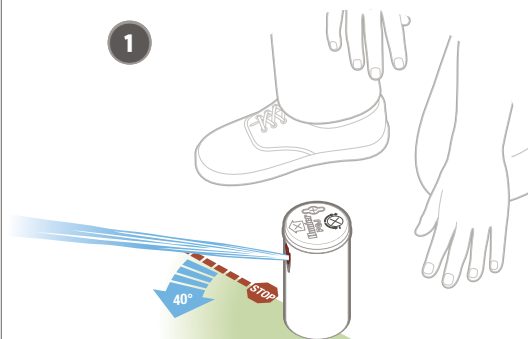
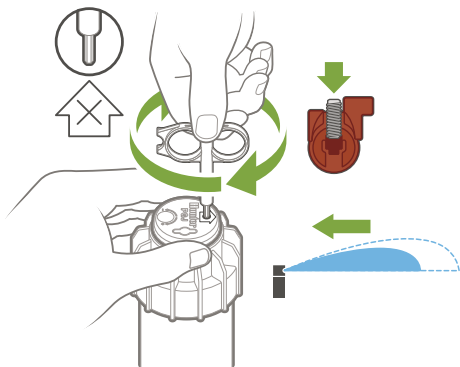
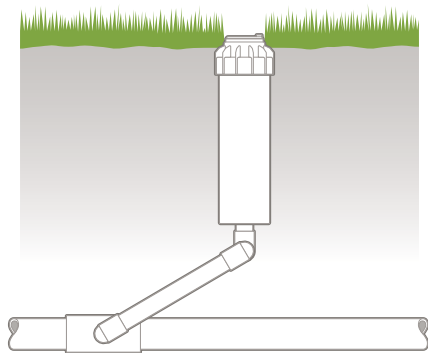














.75



1.7-3.8 Bar
170-380 kPa
30-50 PSI



2.2-3.4 l/m
0.6-0.9 GPM



4.6 m-5.2 m
(15'-17')



1.0



1.7-3.8 Bar
170-380 kPa
30-50 PSI



3.0-4.2 l/m
0.9-1.1 GPM



5.5 m-5.8 m
(18'-19')



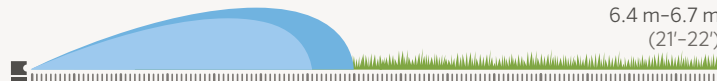
1.5



1.7-3.8 Bar
170-380 kPa
30-50 PSI



4.5-6.7 l/m
1.3-1.7 GPM



6.4 m-6.7 m
(21'-22')



2.0



1.7-3.8 Bar
170-380 kPa
30-50 PSI



5.6-9.3 l/m
1.7-2.3 GPM



7.3 m-7.6 m
(24'-25')



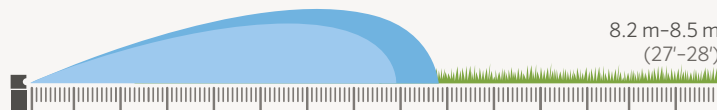
2.5



1.7-3.8 Bar
170-380 kPa
30-50 PSI



7.6-10.9 l/m
2.2-2.8 GPM



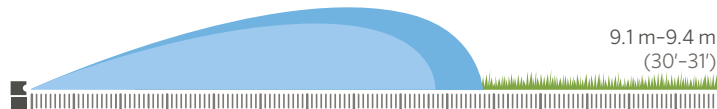
3.0



1.7-3.8 Bar
170-380 kPa
30-50 PSI



8.5-13.7 l/m
2.5-3.4 GPM



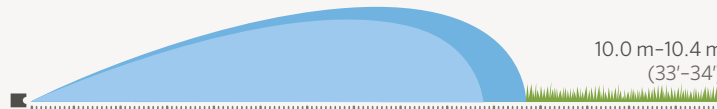
4.0



1.7-3.8 Bar
170-380 kPa
30-50 PSI



13.3-16.7 l/m
3.7-4.3 GPM



5.0



1.7-3.8 Bar
170-380 kPa
30-50 PSI



17.0-20.5 l/m
4.7-5.3 GPM

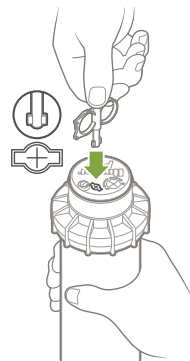




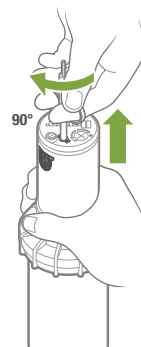
PGP-ADJ



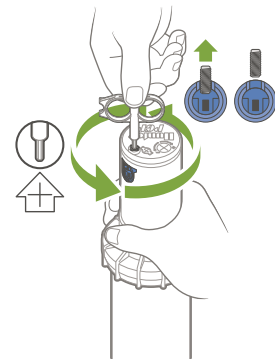
1



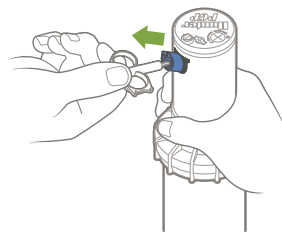
2



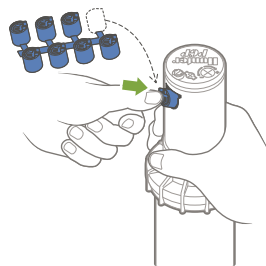
3



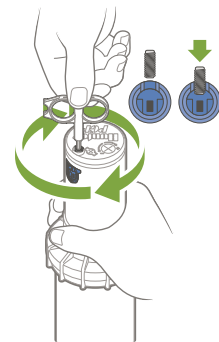
4

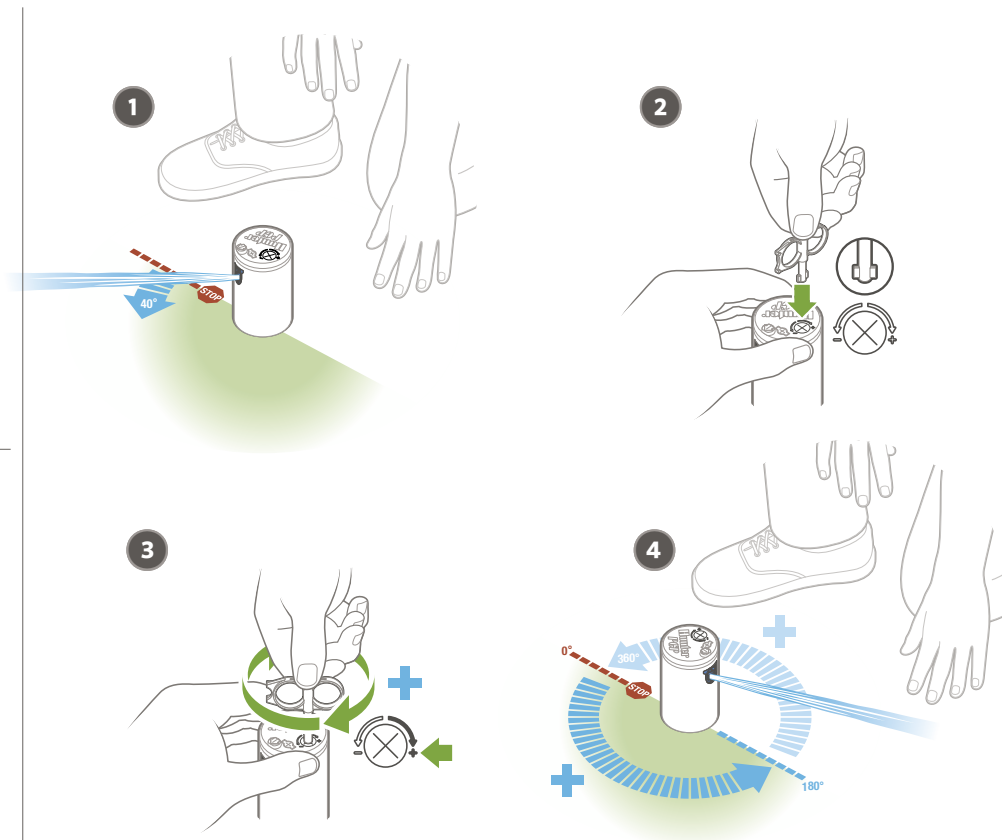
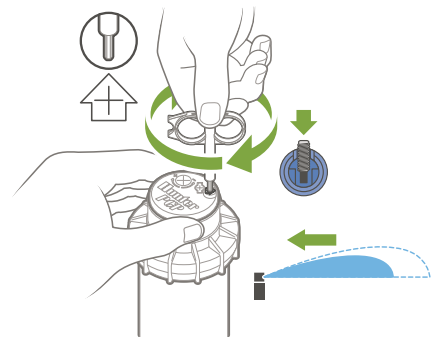
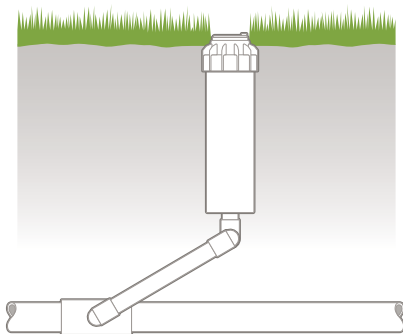


5



6







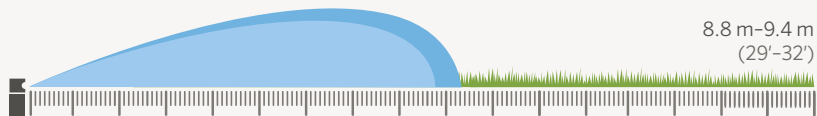
1.5



1.7-4.5 Bar
170-450 kPa
25-65 PSI



4.5-7.2 l/m
1.2-1.9 GPM



8.8 m-9.4 m
(29'-32')



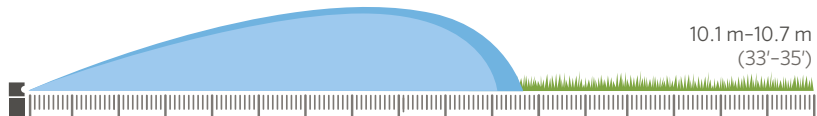
2.0



1.7-4.5 Bar
170-450 kPa
25-65 PSI



5.4-8.8 l/m
1.4-2.3 GPM



10.1 m-10.7 m
(33'-35')



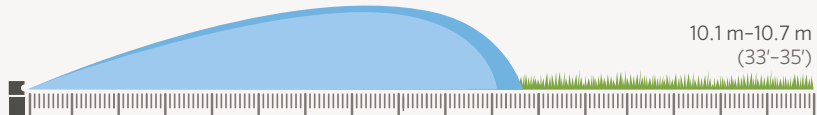
2.5



1.7-4.5 Bar
170-450 kPa
25-65 PSI



6.6-11.1 l/m
1.7-2.9 GPM



10.1 m-10.7 m
(33'-35')



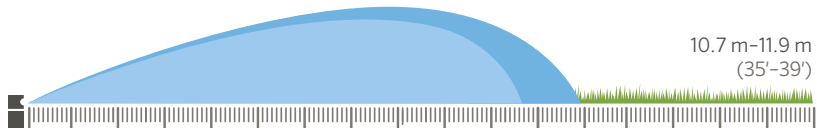
3.0



1.7-4.5 Bar
170-450 kPa
25-65 PSI



8.4-14.0 l/m
2.2-3.7 GPM



10.7 m-11.9 m
(35'-39')



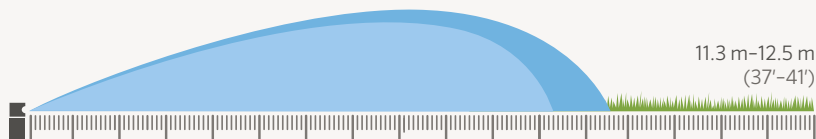
4.0



1.7-4.5 Bar
170-450 kPa
25-65 PSI



11.3-18.3 l/m
3.0-4.8 GPM



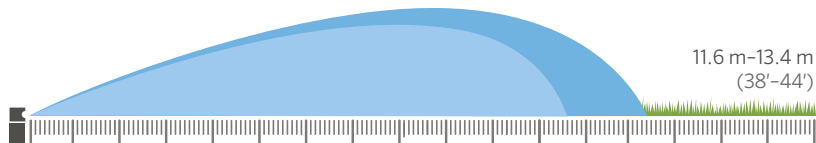
5.0



1.7-4.5 Bar
170-450 kPa
25-65 PSI



14.0-23.4 l/m
3.7-6.2 GPM



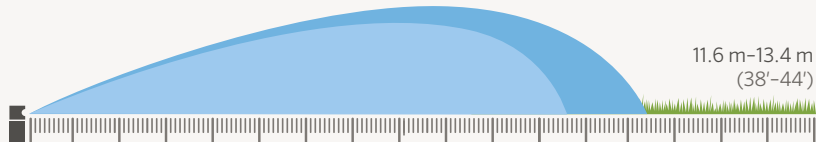
6.0



1.7-4.5 Bar
170-450 kPa
25-65 PSI



16.8-27.9 l/m
4.3-7.3 GPM



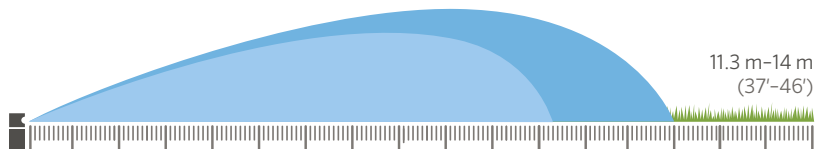
8.0



1.7-4.5 Bar
170-450 kPa
25-65 PSI



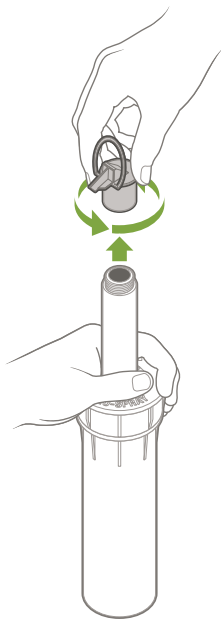
22.5-36.9 l/m
6.0-9.8 GPM



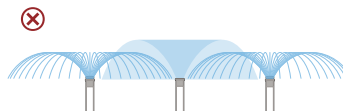
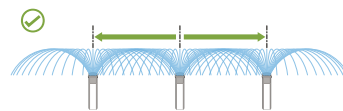
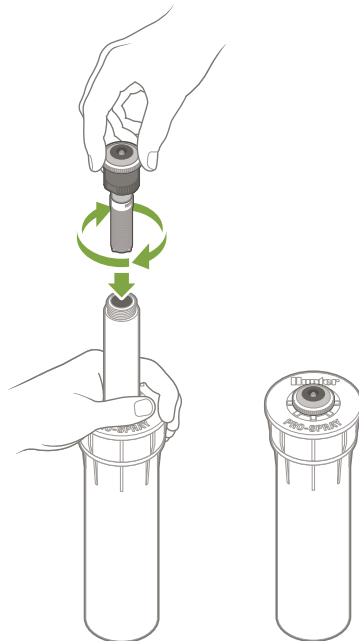
MP ROTATOR[®]

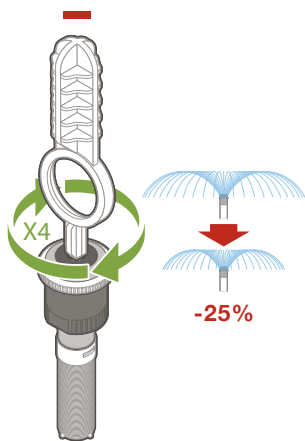
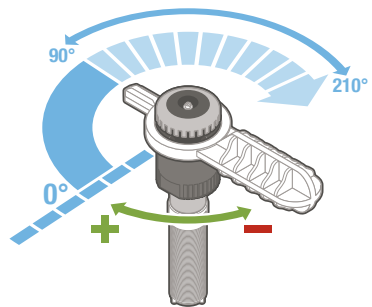


1



2





90°-210° 210°-270° 360°



MP800SR-90



MP800SR-360



MP800SR

20 mm/hr (0.8 in/hr)
1.8 m-3.5 m (6'-12')



MP815-90



MP815-210



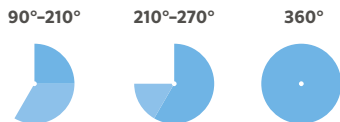
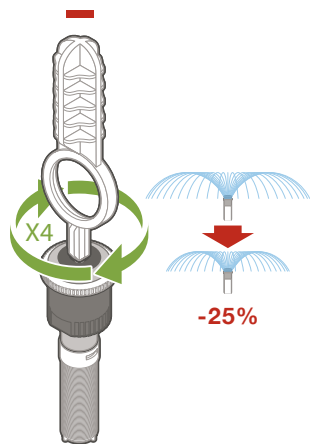
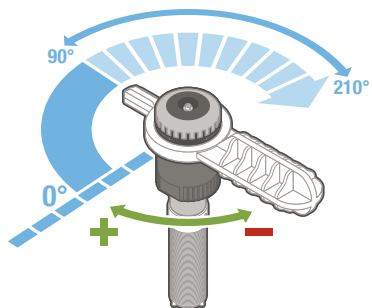
MP815-360



MP815

20 mm/hr (0.8 in/hr)
2.5 m-4.5 m (8'-15')



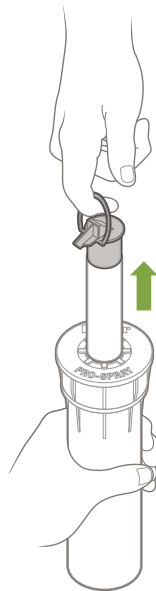


Model	Model	Model	Model	Model
MP1000-90	MP1000-210	MP1000-360	MP1000	10 mm/hr (0.4 in/hr) 2.5 m-4.5 m (8'-15')
MP2000-90	MP2000-210	MP2000-360	MP2000	10 mm/hr (0.4 in/hr) 4 m-6.4 m (13'-21')
MP3000-90	MP3000-210	MP3000-360	MP3000	10 mm/hr (0.4 in/hr) 6.7 m-9.1 m (22'-30')
MP3500-90			MP3500	10 mm/hr (0.4 in/hr) 9.4 m-10.7 m (31'-35')

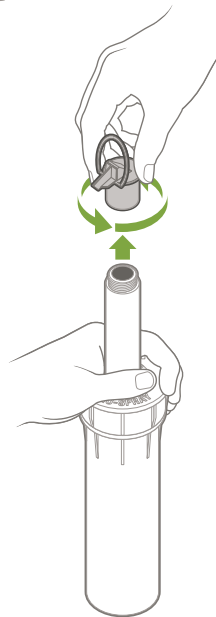
PS ULTRA / PRO-SPRAY[®]



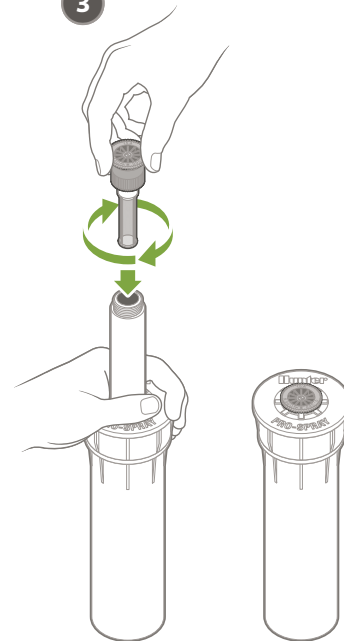
1

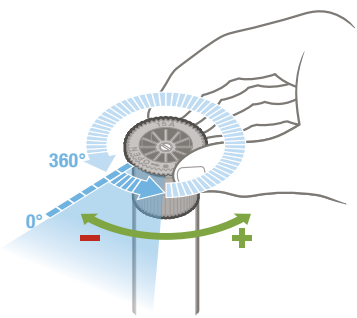
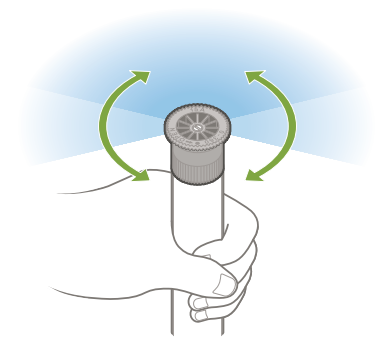
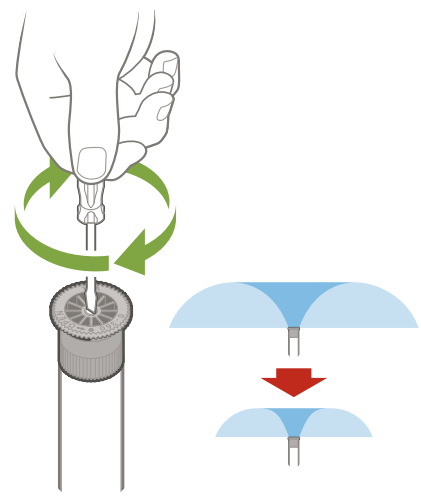
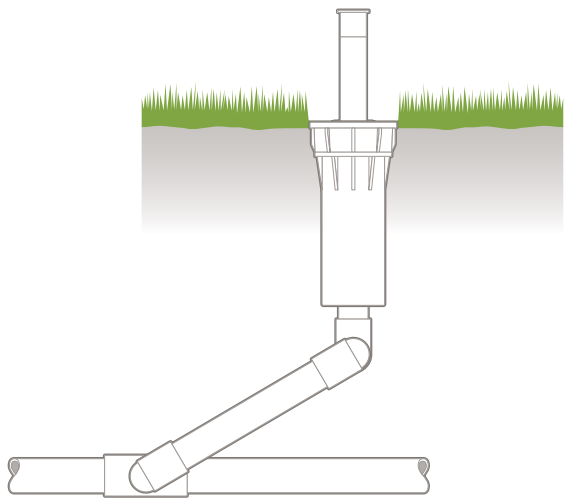


2



3







10A



1.0-3.0 Bar
100-300 kPa
20-40 PSI



0.7-9.5 l/m
0.2-2.3 GPM



2.6-3.5 m
(9'-11')



12A



1.0-3.0 Bar
100-300 kPa
20-40 PSI



0.7-13.4 l/m
0.3-3.4 GPM



3.2 m-4.1 m
(11'-13')



15A



1.0-3.0 Bar
100-300 kPa
20-40 PSI



1.3-18.0 l/m
0.4-4.5 GPM



4.0 m-5.2 m
(14'-17')



17A



1.0-3.0 Bar
100-300 kPa
20-40 PSI



1.7-21.7 l/m
0.5-5.5 GPM



4.6 m-5.8 m
(16'-19')

Hunter[®]

