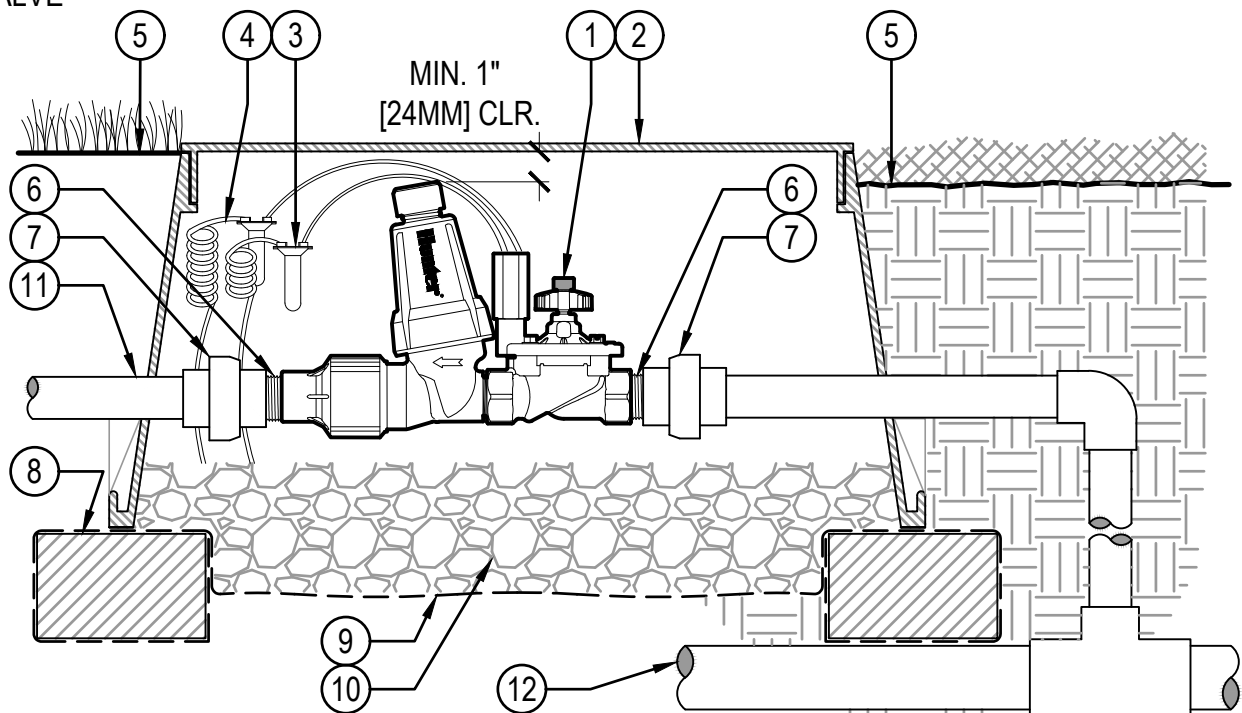


## LEGEND

- |   |  |
|---|--|
| ① HUNTER REMOTE CONTROL VALVE (IBZ) WITH FILTER REGULATOR       | ⑦ PVC SLIP X FPT UNION                             |
| ② IRRIGATION VALVE BOX: HEAT STAMP LID WITH 'RCV' IN 2" LETTERS | ⑧ BRICK SUPPORTS (4)                               |
| ③ WATERPROOF CONNECTORS (2)                                     | ⑨ FILTER FABRIC - WRAP TWICE AROUND BRICK SUPPORTS |
| ④ 18"-24" COILED WIRE TO CONTROLLER                             | ⑩ 3/4" WASHED GRAVEL - 4" MIN. DEPTH               |
| ⑤ FINISH GRADE AT ADJACENT SURFACE (TURF OR MULCH)              | ⑪ IRRIGATION LATERAL                               |
| ⑥ SCH. 80 CLOSE NIPPLE, MATCH SIZE TO VALVE                     | ⑫ MAINLINE LATERAL AND FITTINGS                    |



## DRIP CONTROL ZONE KIT (IBZ-101-LF)

### WITH UNIONS



Hunter® V.IBZ.02

NO SCALE