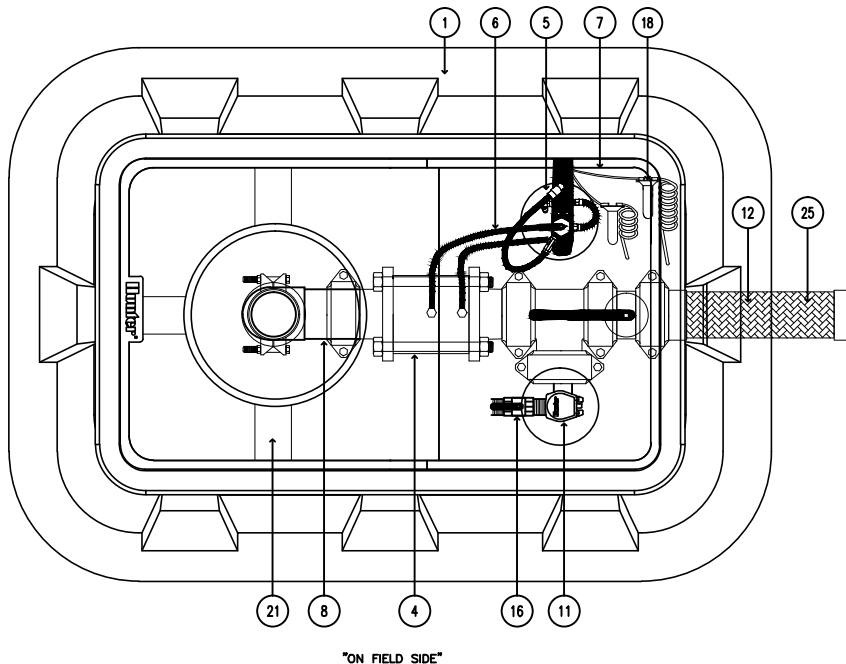
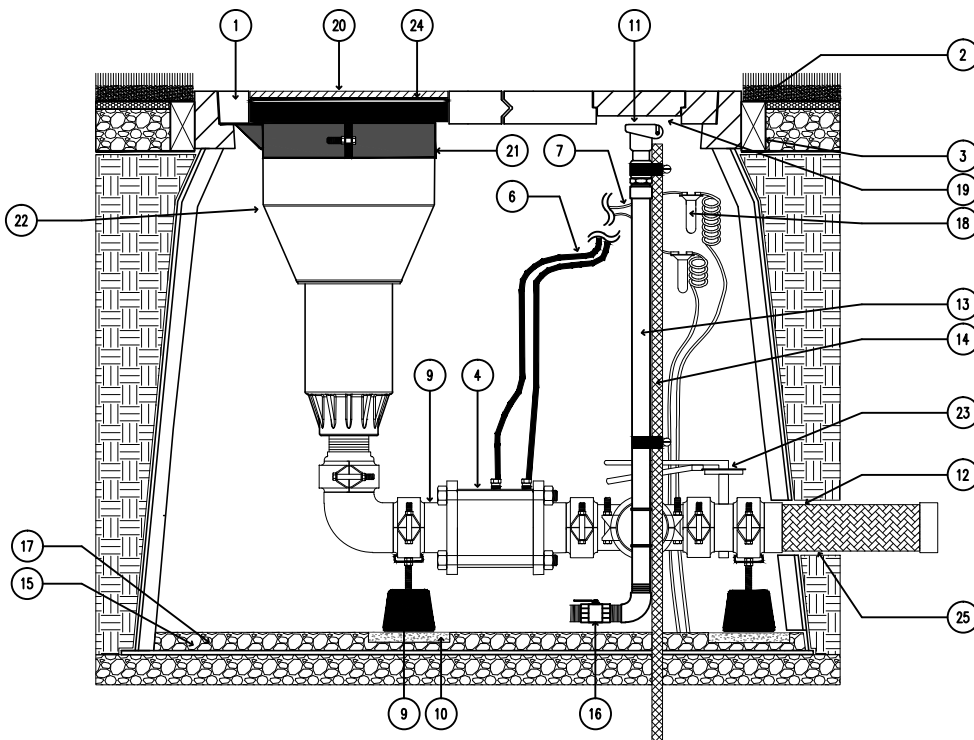


**STK-6V**  
 SYNTHETIC TURF VAH ROTOR & ENCLOSURE SYSTEM  
**TOP VIEW**  
 "OFF FIELD SIDE"



"ON FIELD SIDE"



"VIEW FROM ON FIELD SIDE"

**STK-6V SIDE VIEW "NO TURF OVER VAULT"**  
 XX SCALE: N.T.S. IRRIGATION DETAIL

- ① HUNTER ST-243636B\* COMPOSITE VAULT & 4-PIECE POLYMER-CONCRETE COVER SET WITH CAST-IN OPENINGS TO SUPPORT ROTOR LATERAL THRUST PLUS CAST IN OPENING WITH CIRCULAR COVERS FOR QUICK COUPLER AND ON-OFF-AUTO SELECTOR ACCESS
  - ② FINISHED GRADE SET TO FIELD PERIMETER TACK/GLUE BOARD OR AS PER SPECIFICATION
  - ③ 2" X 4" (50mm X 102mm) TACK/GLUE BOARD AS PER SPECIFICATION ALL SIDES
  - ④ HUNTER ST-V30KV ULTRA LOW LOSS 3" (80mm) VALVE KIT WITH GROOVED FITTING CONNECTIONS
  - ⑤ REMOTE ON-OFF-AUTO SELECTOR AND SOLENOID MANIFOLD ASSEMBLY MOUNTED ON VAULT SIDEWALL
  - ⑥ COLOR CODED CONTROL TUBING FROM ST-V30KV VALVE TO SELECTOR SWITCH MOUNTED ON VAULT SIDE WALL
  - ⑦ LEAD WIRES FROM SOLENOID TO WATERPROOF SPLICE CONNECTORS
  - ⑧ HUNTER ST-BVF30K ISOLATION VALVE AND FITTING KIT WITH GROOVED CONNECTIONS AND 500 PSI RATED COUPLINGS SUFFICIENT TO CONNECT ROTOR AND CONTROL VALVE TO MANIFOLD INLET
  - ⑨ HUNTER ST-SPTK ADJUSTABLE MANIFOLD SUPPORT BLOCK ADJUSTED TO SUPPORT MANIFOLD WEIGHT TWO (2) REQUIRED
  - ⑩ SUPPORT PAD AS 16" X 16" X 2" (41cm X 41cm X 50mm) CONCRETE STEPPING STONE OR AS PER SPECIFICATION (2)
  - ⑪ HUNTER HQ-5RC QUICK COUPLING VALVE SET DIRECTLY BELOW CIRCULAR QUICK-ACCESS PORT
  - ⑫ HUNTER ST-H30K 3" (80mm) STAINLESS STEEL FLEXIBLE INLET PIPE
  - ⑬ 1" (25mm) MINIMUM SCH 80 QUICK COUPLER SUPPLY PIPING AND FITTINGS OR AS PER SPECIFICATION
  - ⑭ 5/8" X 48" (16mm X 122cm) REBAR STAKE WITH STAINLESS STEEL STRAPPING
  - ⑮ COMPACTED BASE FIELD MATERIALS PER SPECIFICATIONS
  - ⑯ BRASS MANUAL BALL VALVE INCLUDED/PROVIDED WITH #9 ST-BVF30K
  - ⑰ PROVIDE DRAINAGE VIA ACCESS TO FIELD DRAINAGE SYSTEM
  - ⑱ WATERPROOF CONNECTIONS PER SPECIFICATIONS BETWEEN CONTROL WIRE AND SOLENOID LEAD WIRES
  - ⑲ TOP OF QUICK COUPLER SET LESS THAN 1/2" (13mm) BELOW UNDERSIDE OF MAIN VAULT COVER TO ALLOW KEY ACTIVATION FROM ABOVE
  - ⑳ HUNTER ST-IBS1600 RUBBER COVER AND INFILL BARRIER KIT WITH TRIM REFERENCE RINGS TO ALLOW HEIGHTS FROM STANDARD 1-1/4" (32mm) (INFILL APPLICATION) TO FLAT (NON-INFILL OR TRACK MATERIAL) APPLICATIONS
  - ㉑ HUNTER ST-BKT1600 ROTOR HANGER AND ELEVATION ADJUSTMENT BRACKET
  - ㉒ HUNTER ST-1600B ROTOR
  - ㉓ ISOLATION BUTTERFLY VALVE WITH GROOVED CONNECTIONS INCLUDED/PROVIDED WITH #9 ST-BVF30K
  - ㉔ HUNTER ST-FRP1600 MATERIAL ATTACHED TO FLATTENED ST-IBS1600 USING HUNTER ST-ADH ADHESIVE AND APPROVED PROCEDURES
  - ㉕ WRAP FLEXIBLE INLET PIPING WITH HEAVY-DUTY PLASTIC PIPE WRAP TAPE PRIOR TO BACK-FILL AND COMPACTION
- \*ENCLOSURE DIMENSIONS  
 4 - PIECE COVER - 24" X 36" (50cm X 76cm)  
 EXPOSED RIM - 26" X 38" (66cm X 96.5cm)  
 OVERALL HEIGHT - 36" (76cm)  
 BASE PAD - 42" X 48" (107cm X 122cm)