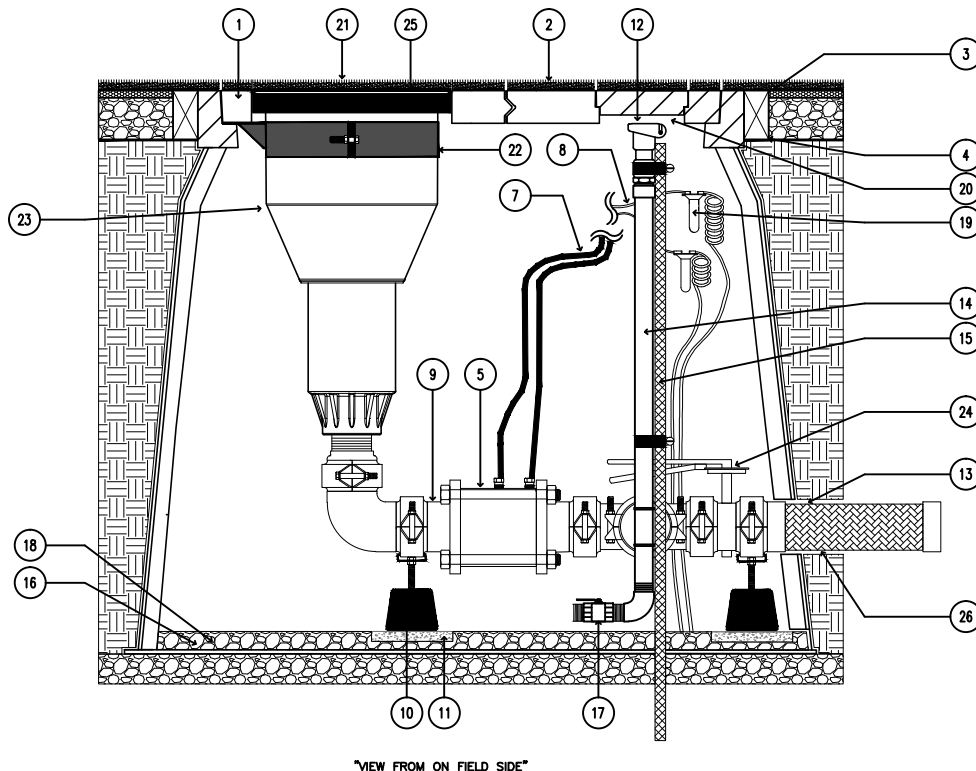
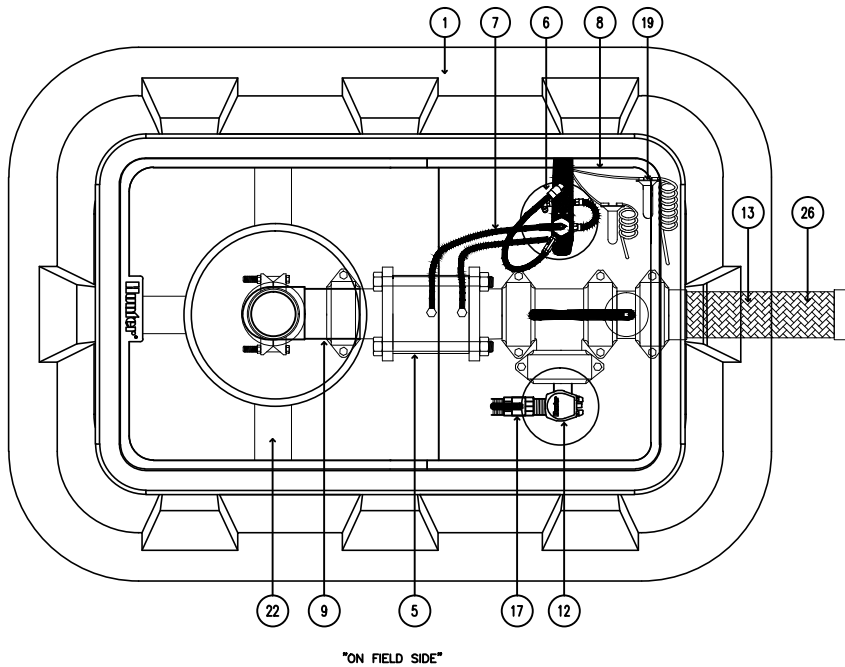


**STK-6V**  
SYNTHETIC TURF VAH ROTOR & ENCLOSURE SYSTEM  
**TOP VIEW**  
"OFF FIELD SIDE"



**STK-6V SIDE VIEW "HOCKEY TURF OVER VAULT"**  
SCALE: N.T.S. IRRIGATION DETAIL

- ① HUNTER ST-243636B\* COMPOSITE VAULT & 4-PIECE POLYMER-CONCRETE COVER SET WITH CAST-IN OPENINGS TO SUPPORT ROTOR LATERAL THRUST PLUS CAST IN OPENING WITH CIRCULAR COVERS FOR QUICK COUPLER AND ON-OFF-AUTO SELECTOR ACCESS
- ② HOCKEY TURF MATERIAL ATTACHED TO VAULT RIM AND COVER SET
- ③ FINISHED GRADE SET TO FIELD PERIMETER TACK/GLUE BOARD OR AS PER SPECIFICATION
- ④ 2" X 4" (50mm X 102mm) TACK/GLUE BOARD AS PER SPECIFICATION ALL SIDES
- ⑤ HUNTER ST-V30KV ULTRA LOW LOSS 3" (80mm) VALVE KIT WITH GROOVED FITTING CONNECTIONS
- ⑥ REMOTE ON-OFF-AUTO SELECTOR AND SOLENOID MANIFOLD ASSEMBLY MOUNTED ON VAULT SIDEWALL
- ⑦ COLOR CODED CONTROL TUBING FROM ST-V30KV VALVE TO SELECTOR SWITCH MOUNTED ON VAULT SIDE WALL
- ⑧ LEAD WIRES FROM SOLENOID TO WATERPROOF SPLICE CONNECTORS
- ⑨ HUNTER ST-BVF30K ISOLATION VALVE AND FITTING KIT WITH GROOVED CONNECTIONS AND 500 PSI RATED COUPLINGS SUFFICIENT TO CONNECT ROTOR AND CONTROL VALVE TO MANIFOLD INLET
- ⑩ HUNTER ST-SPTK ADJUSTABLE MANIFOLD SUPPORT BLOCK ADJUSTED TO SUPPORT MANIFOLD WEIGHT TWO (2) REQUIRED
- ⑪ SUPPORT PAD AS 16" X 16" X 2" (41cm X 41cm X 50mm) CONCRETE STEPPING STONE OR AS PER SPECIFICATION (2)
- ⑫ HUNTER HQ-5RC QUICK COUPLING VALVE SET DIRECTLY BELOW CIRCULAR QUICK-ACCESS PORT
- ⑬ HUNTER ST-H30K 3" (80mm) STAINLESS STEEL FLEXIBLE INLET PIPE
- ⑭ 1" (25mm) MINIMUM SCH 80 QUICK COUPLER SUPPLY PIPING AND FITTINGS OR AS PER SPECIFICATION
- ⑮ 5/8" X 48" (16mm X 122cm) REBAR STAKE WITH STAINLESS STEEL STRAPPING
- ⑯ COMPACTED BASE FIELD MATERIALS PER SPECIFICATIONS
- ⑰ BRASS MANUAL BALL VALVE INCLUDED/PROVIDED WITH #9 ST-BVF30K
- ⑱ PROVIDE DRAINAGE VIA ACCESS TO FIELD DRAINAGE SYSTEM
- ⑲ WATERPROOF CONNECTIONS PER SPECIFICATIONS BETWEEN CONTROL WIRE AND SOLENOID LEAD WIRES
- ⑳ TOP OF QUICK COUPLER SET LESS THAN 1/2" (13mm) BELOW UNDERSIDE OF MAIN VAULT COVER TO ALLOW KEY ACTIVATION FROM ABOVE
- ㉑ HUNTER ST-IBS1600 RUBBER COVER AND INFILL BARRIER KIT WITH TRIM REFERENCE RINGS TO ALLOW HEIGHTS FROM STANDARD 1-1/4" (32mm) (INFILL APPLICATION) TO FLAT (NON-INFILL OR TRACK MATERIAL) APPLICATIONS
- ㉒ HUNTER ST-BKT1600 ROTOR HANGER AND ELEVATION ADJUSTMENT BRACKET
- ㉓ HUNTER ST-1600B ROTOR
- ㉔ ISOLATION BUTTERFLY VALVE WITH GROOVED CONNECTIONS INCLUDED/PROVIDED WITH #9 ST-BVF30K
- ㉕ FIELD HOCKEY MATERIAL ATTACHED TO FLATTENED ST-IBS1600 USING HUNTER ST-ADH ADHESIVE AND APPROVED PROCEDURES.
- ㉖ WRAP FLEXIBLE INLET PIPING WITH HEAVY-DUTY PLASTIC PIPE WRAP TAPE PRIOR TO BACK-FILL AND COMPACTION

\*ENCLOSURE DIMENSIONS  
4 - PIECE COVER - 24" X 36" (50cm X 76cm)  
EXPOSED RIM - 26" X 38" (66cm X 96.5cm)  
OVERALL HEIGHT - 36" (76cm)  
BASE PAD - 42" X 48" (107cm X 122cm)