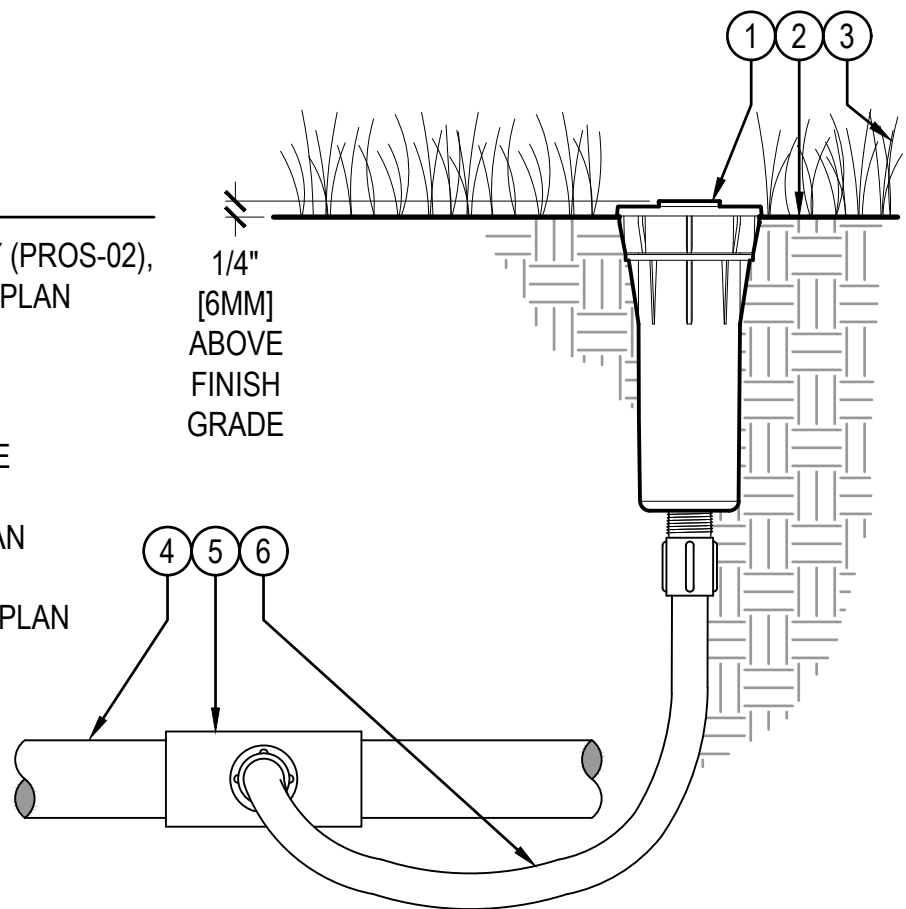


## LEGEND

- ① HUNTER POP-UP BODY (PROS-02), NOZZLE AND CAP PER PLAN
- ② FINISHED GRADE
- ③ ADJACENT LANDSCAPE
- ④ LATERAL PIPE PER PLAN
- ⑤ LATERAL FITTING PER PLAN
- ⑥ FIELD-BUILT FLEXIBLE SWING ARM



## POP-UP BODY (PROS-02) WITH FLEX TUBING



**Hunter**® SB.PRO.17

NO SCALE