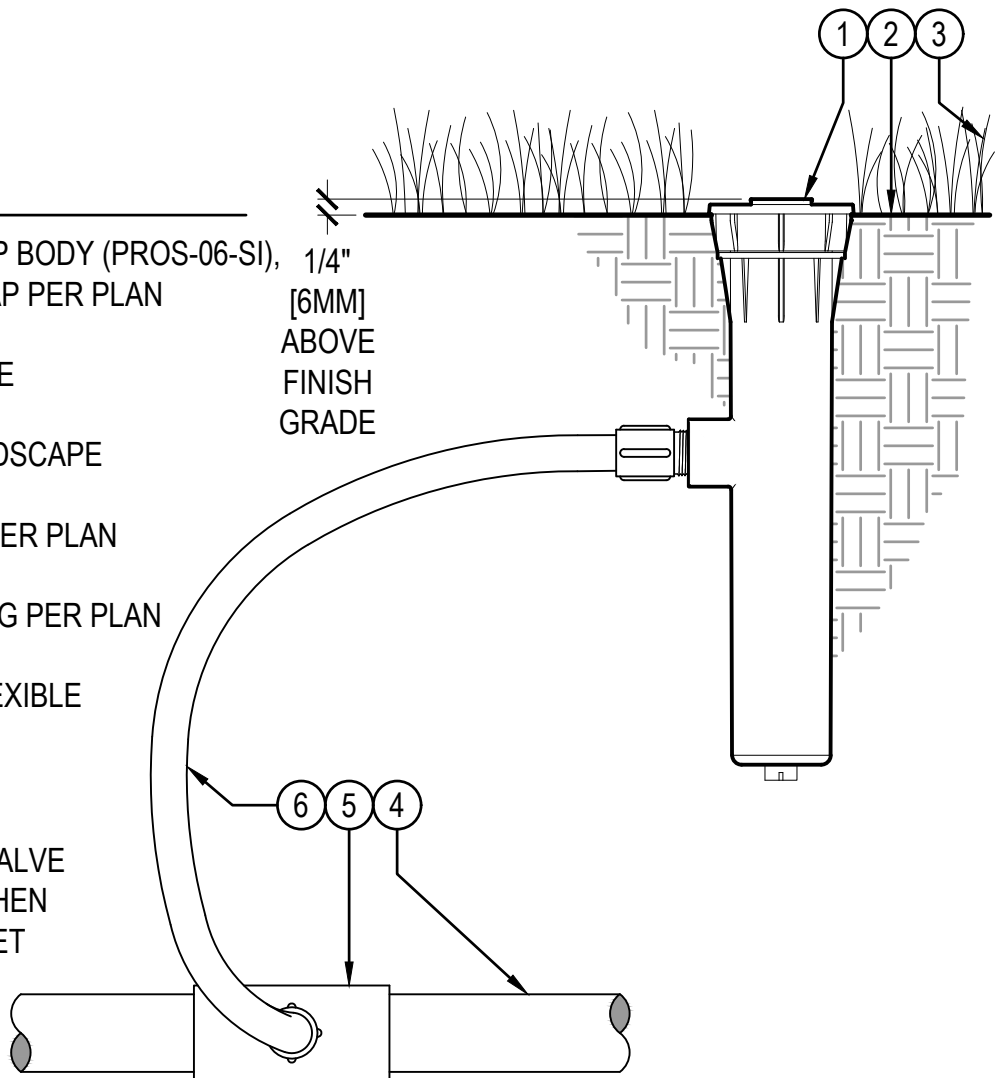


LEGEND

- ① HUNTER POP-UP BODY (PROS-06-SI), 1/4" NOZZLE AND CAP PER PLAN
- ② FINISHED GRADE
- ③ ADJACENT LANDSCAPE
- ④ LATERAL PIPE PER PLAN
- ⑤ LATERAL FITTING PER PLAN
- ⑥ FIELD-BUILT FLEXIBLE SWING ARM

NOTE: CHECK VALVE INOPERABLE WHEN USING SIDE INLET



POP-UP BODY (PROS-06-SI) WITH FLEX TUBING

