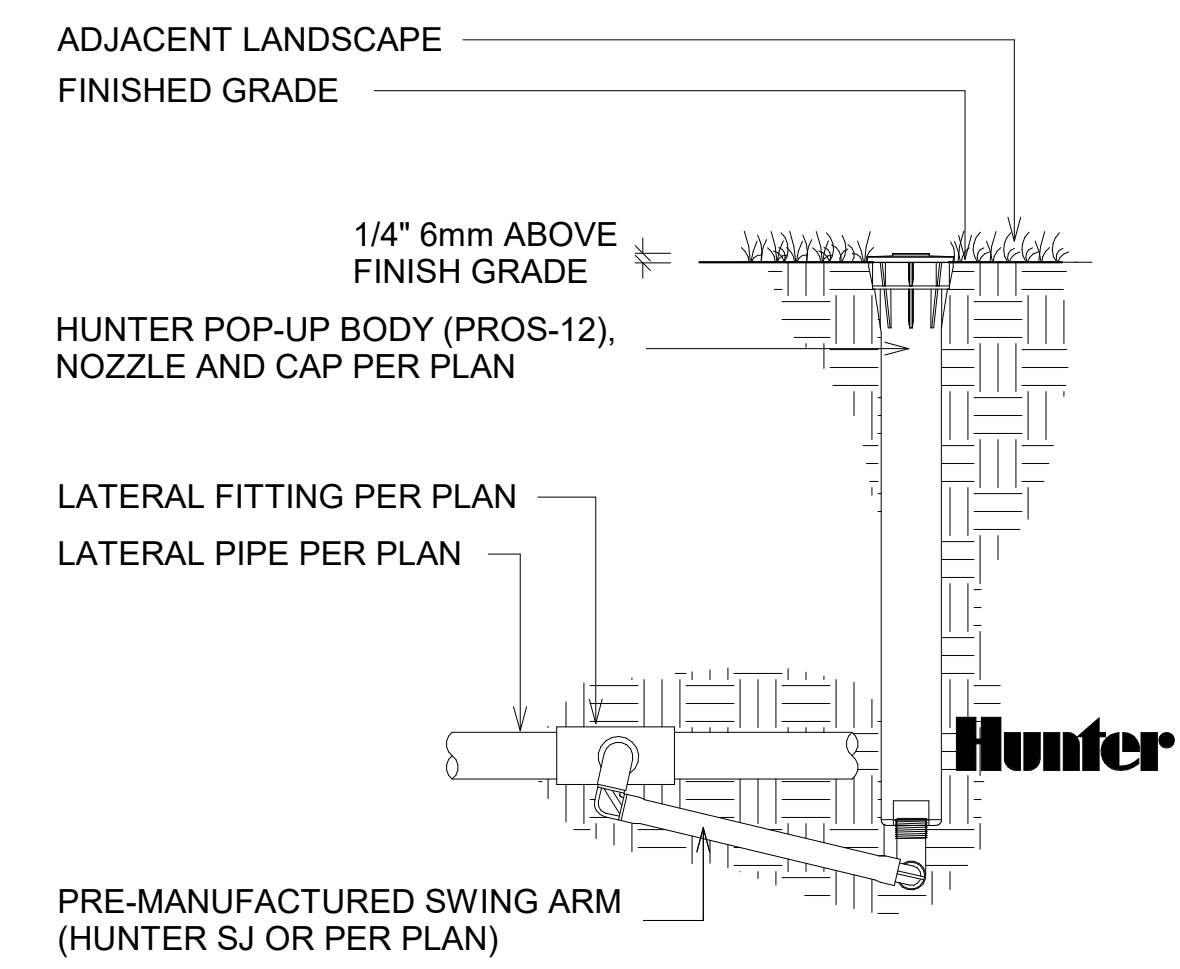


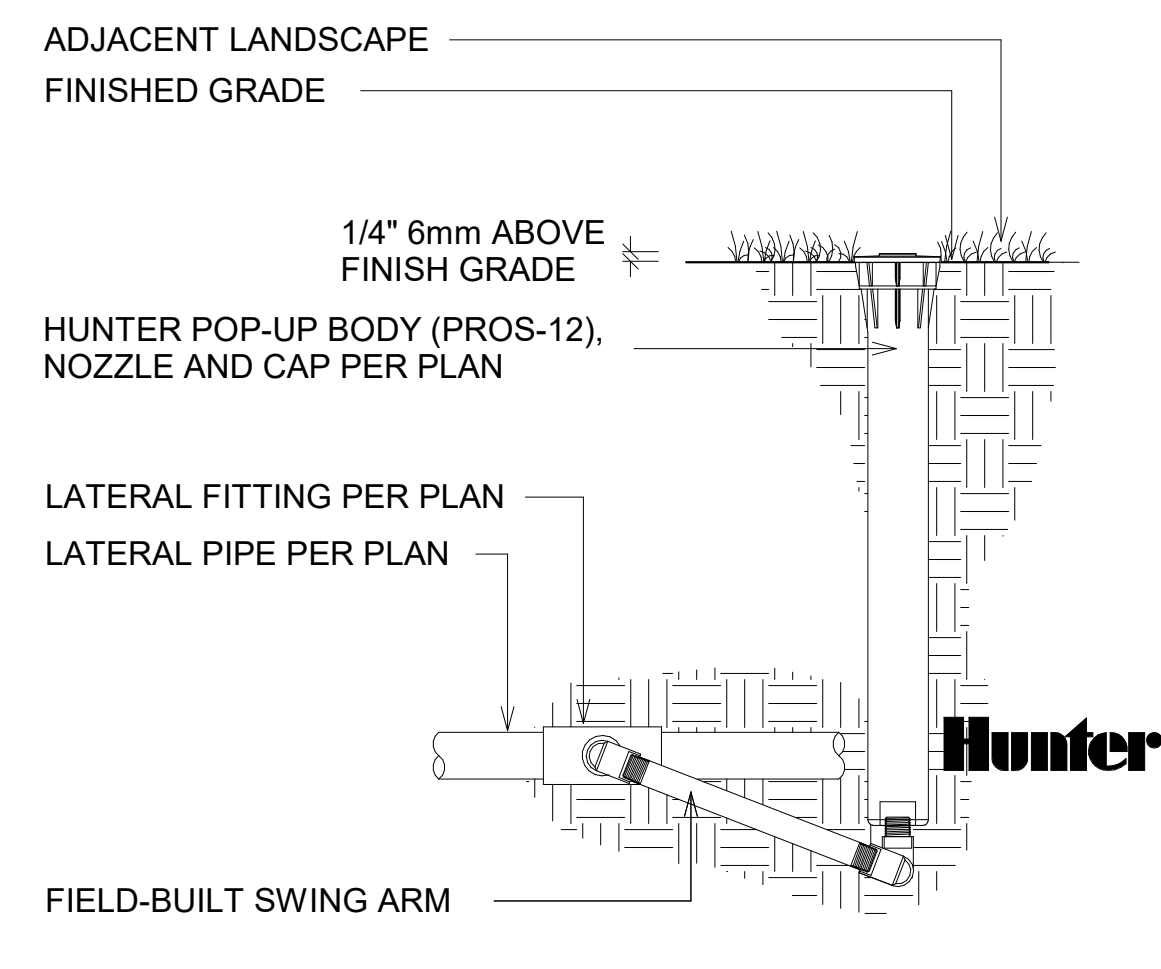


<https://www.hunterindustries.com/>



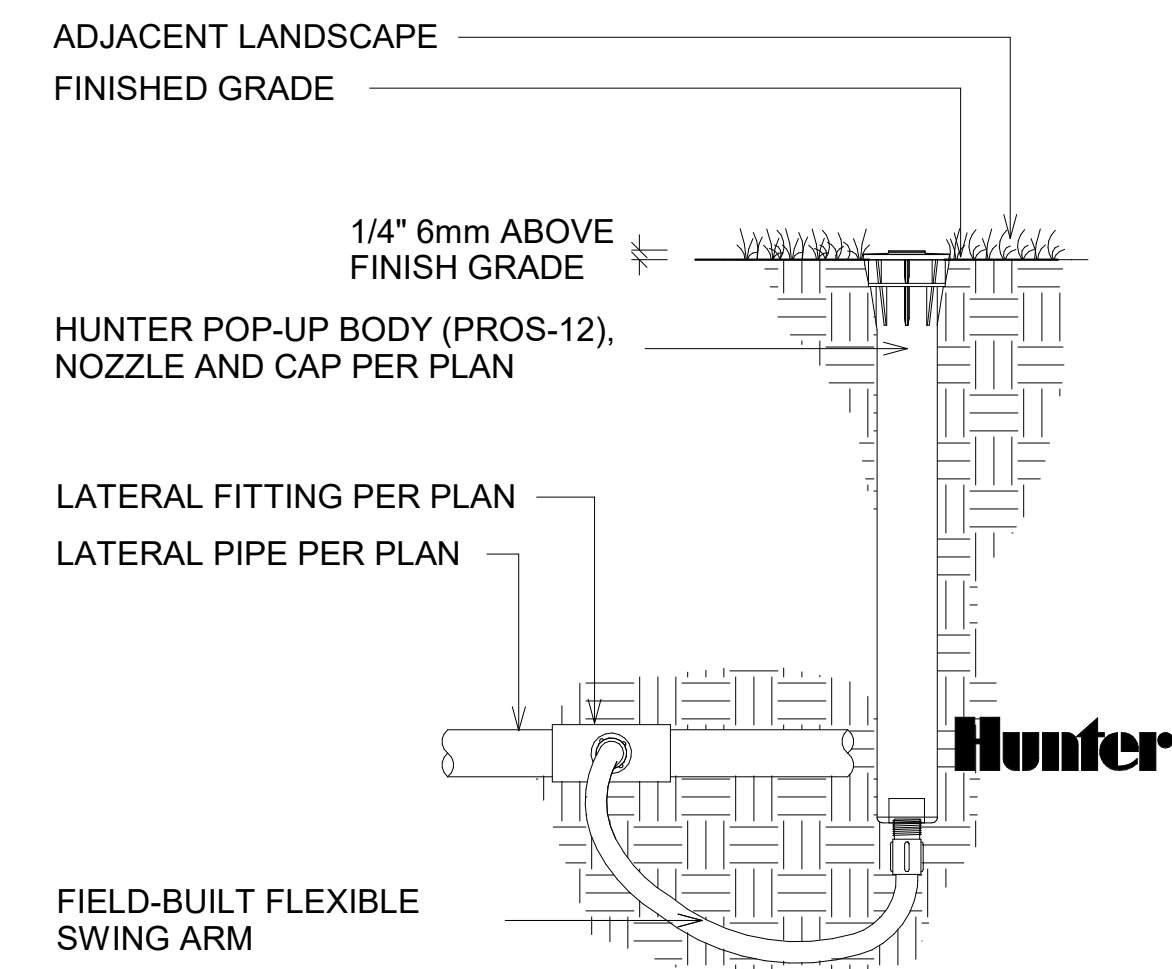
OPTIONS:
R = FACTORY INSTALLED RECLAIMED RUBBER COVER
CV = FACTORY INSTALLED CHECK VALVE

SB PRO 35 PRO-SPRAY (PROS-12) WITH (SJ) SWING JOINT
1 : 5



OPTIONS:
R = FACTORY INSTALLED RECLAIMED RUBBER COVER
CV = FACTORY INSTALLED CHECK VALVE

SB PRO 36 PRO-SPRAY (PROS-12) WITH SWING ARM
1 : 5



OPTIONS:
R = FACTORY INSTALLED RECLAIMED RUBBER COVER
CV = FACTORY INSTALLED CHECK VALVE

SB PRO 37 PRO-SPRAY (PROS-12) WITH FLEX TUBING
1 : 5

No.	Description	Date

Hunter Industries

PRO Spray

PROS-12
Installation Details

Project Number	PROS-12
Date	09/5/2019
Drawn By	Hunter
Checked By	Hunter

PROS 12

Scale 1 : 5