

STG-900-KIT / STG-900

This top-quality, long-range system is specially designed for synthetic turf sports field irrigation.

KEY BENEFITS

- Arc setting: 40° to 360°
- QuickCheck™ arc mechanism
- Through-the-top arc adjustment
- Water-lubricated gear drive
- Factory-installed rubber logo cap
- Nozzle trajectory: 22.5°

OPERATING SPECIFICATIONS

- Radius: 103' to 120'
- Flow: 74.5 to 92.0 GPM
- Operating pressure range: 100 to 120 PSI
- Precipitation rate: 1.25 in/hr approximately
- Warranty period: 5 years for component parts

USER-INSTALLED OPTIONS

- Rubber cover kit STG-900: P/N 473900SP

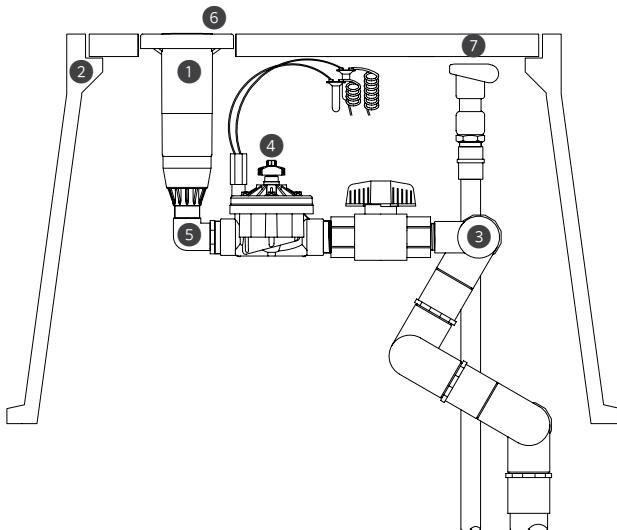


STG-900*

Overall height: 14"
Pop-up height: 3"
Diameter: 8"
Inlet size: 1½" Acme

*For use with the ST173026B Vault

STG-900-KIT



STG-900-KIT COMPONENTS

| FIGURE | COMPONENTS | QTY | DESCRIPTION |
|--------|-------------|-----|--|
| 1 | STG-900-83 | 1 | Pop-up, top serviceable, adjustable arc (40°-360°), 1½" Acme inlet |
| 2 | ST-173026-B | 1 | Composite vault, pre-cast hole for rotor and quick coupler |
| 3 | ST-2008-VA | 1 | Vertical alignment PVC swing joint, seven pivot points, 2" female slip inlet, 1½" female Acme outlet |
| 4 | ST-VBVF-K | 1 | ICV-151G valve, manifold ball valve, 1½" Acme inlet, 1½" Acme outlet |
| 5 | 239800 | 1 | 1½" elbow, female Acme to male Acme, connects STG-900 rotor to ST-VBVF-K |
| 6 | 473900SP | 1 | STG-900 rubber cover kit |
| 7 | HQ-5RC | 1 | Quick coupler, 1" NPT inlet, 1¼" outlet for key |

STG-900 Rotor



STG-900 NOZZLE PERFORMANCE DATA

| Nozzle | Pressure PSI | Radius ft. | Flow GPM | Precip in/hr | |
|-------------|-----------------|---------------|-------------|--------------|------|
| | | | | ■ | ▲ |
| 73 ● | 100 | 103 | 74.5 | 1.35 | 1.56 |
| | 110 | 109 | 77.0 | 1.25 | 1.44 |
| Orange | 120 | 115 | 79.6 | 1.16 | 1.34 |
| 83 ● | 100 | 112 | 84.2 | 1.29 | 1.49 |
| | 110 | 116 | 88.1 | 1.26 | 1.46 |
| Tan | 120 | 120 | 92.0 | 1.23 | 1.42 |

Notes:

All precipitation rates are calculated for 180° operation.
For the precipitation rate of a 360° sprinkler, divide by 2.

ST SWING JOINTS

Multiaxis 315 PSI rated vertical alignment PVC swing joints with seven O-ring sealed pivot points allow the rotor to be perfectly placed within the ST Vault's cover set opening.

ST2008VA: 2" for ST-90, STG-900

Inlet: 2" female slip
Outlet: 1½" female Acme

Adapter fitting 239300
Connects 239800 elbow fitting to
STG-900 Acme inlet rotor

Adapter fitting 239302
Connects 239800 elbow fitting to
ST-90B BSP inlet rotor



ST VALVE SETS

Heavy-duty control valves are configured to complement the ST Rotors and ST Vaults.

STVBVFK: for STG-900 in STK-2 Kit

Valve: 1½" NPT ICV
Ball valve: 315 PSI rated
Inlet: 1½" Acme
Outlet: 1½" Acme
Low pressure loss design: 9.8 PSI at 100 GPM
Includes: 1½" connection fittings



ST VAULTS

Heavy-duty tapered fiberglass and polymer-concrete construction with pre-cast holes for rotor and quick-coupler valve.

ST173026B for STG-900 includes 2" thick, 3-piece PC cover set

Main cover: 17" x 30"
Overall height: 26"
Body weight: 104 lbs.
Total weight: 161 lbs.
Base pad: 27" x 41"
Quick-access port: 1



① Quick Coupler

All ST Vaults include convenient quick-access ports. Quick couplers provide a convenient source of water for washing down spills and water-soluble paint. The integrated in-vault design eliminates the need for additional quick-coupler enclosures.