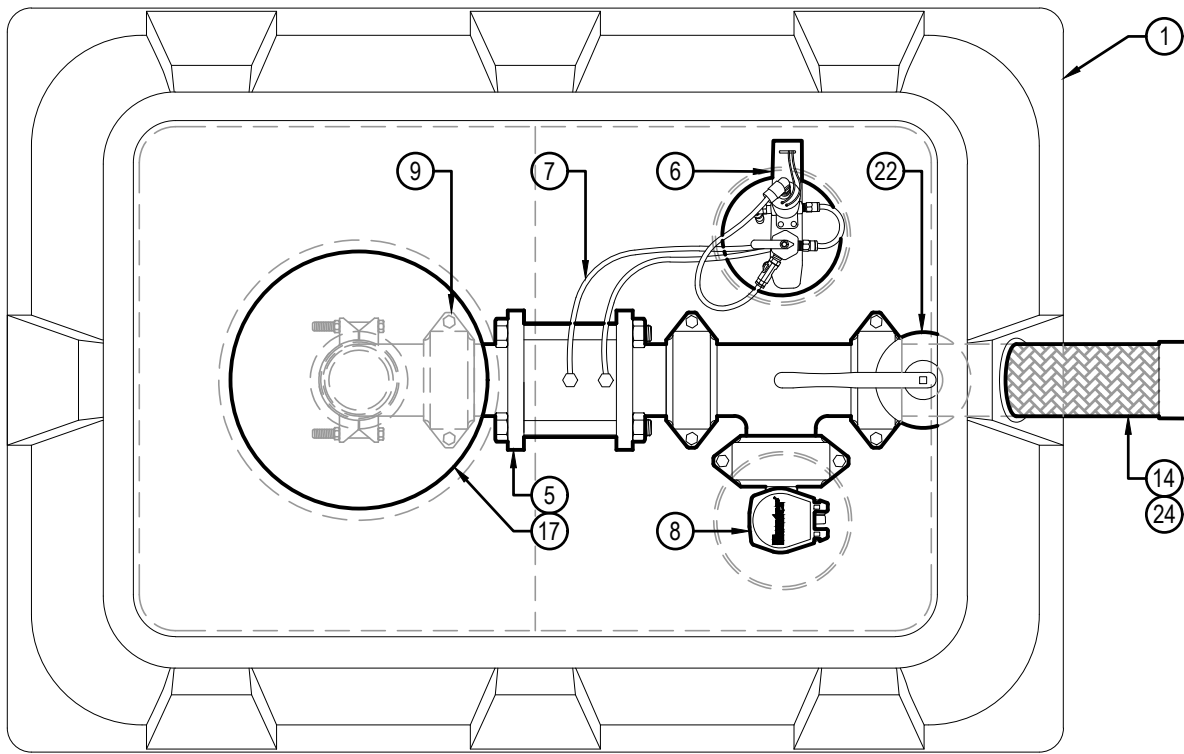
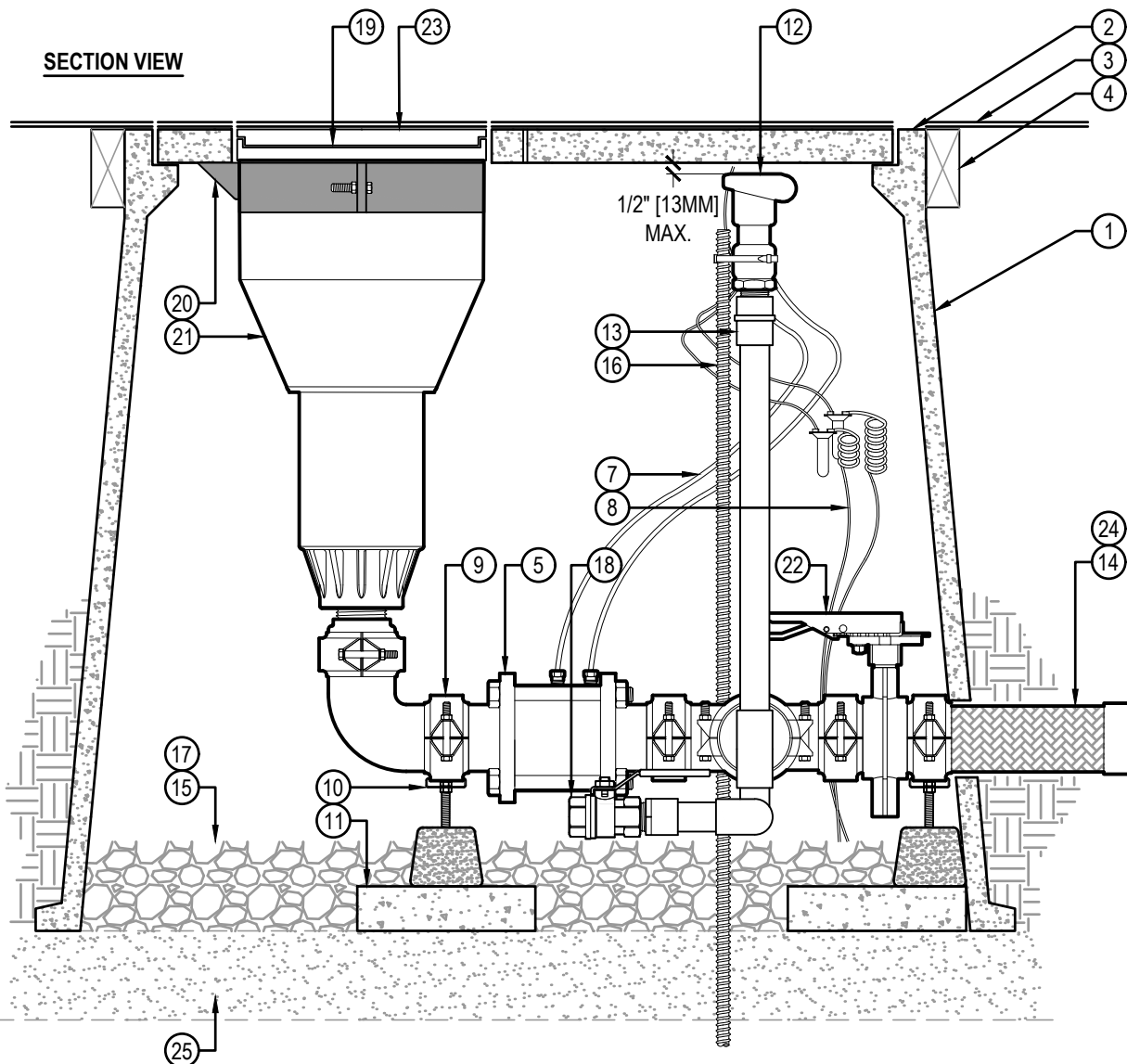


PLAN VIEW
(COVER NOT SHOWN FOR CLARITY)



SECTION VIEW



LEGEND

- ① HUNTER ST243636B* COMPOSITE VAULT & 4-PIECE POLYMER-CONCRETE LID ASSEMBLY WITH CAST-IN OPENING TO SUPPORT ROTOR LATERAL THRUST PLUS CAST IN OPENINGS WITH CIRCULAR COVERS FOR QUICK COUPLER AND ON-OFF-AUTO SELECTOR ACCESS
 - ② RUBBER SURFACING GLUED TO COVERS (OR AS SPECIFIED)
 - ③ FINISHED GRADE SET TO FIELD PERIMETER TACK/GLUE BOARD OR AS SPECIFIED
 - ④ TACK/GLUE BOARD AS SPECIFIED (ALL SIDES)
 - ⑤ HUNTER ST-V30KV ULTRA LOW LOSS 3" [80MM] VALVE KIT WITH GROOVED FITTING CONNECTIONS
 - ⑥ REMOTE ON-OFF-AUTO SELECTOR SWITCH AND SOLENOID ASSEMBLY MOUNTED BELOW CIRCULAR QUICK-ACCESS PORT
 - ⑦ COLOR CODED CONTROL TUBING FROM ST-V30KV VALVE TO SELECTOR SWITCH ASSEMBLY
 - ⑧ LEAD WIRES FROM SOLENOID TO CONTROL WIRES WITH WATERPROOF SPLICE CONNECTORS AS SPECIFIED
 - ⑨ HUNTER ST-BVF30K ISOLATION VALVE AND FITTING KIT WITH GROOVED CONNECTIONS AND 500 PSI RATED COUPLINGS (TO CONNECT ROTOR AND CONTROL VALVE TO MANIFOLD INLET)
 - ⑩ HUNTER ST-SPTK ADJUSTABLE MANIFOLD SUPPORT BLOCK ADJUSTED TO SUPPORT MANIFOLD WEIGHT; (2) REQUIRED
 - ⑪ SUPPORT PAD (16" X 8" X 2" [41 CM X 20.5CM X 50MM]) CONCRETE STEPPING STONE OR AS SPECIFIED; (2) REQUIRED
 - ⑫ HUNTER HQ5RC QUICK COUPLING VALVE SET DIRECTLY BELOW CIRCULAR QUICK-ACCESS PORT
 - ⑬ QUICK COUPLER RISER AND FITTINGS: 1" [25MM] MINIMUM SCH. 80 OR AS SPECIFIED
 - ⑭ HUNTER ST-H30K 3" [80MM] STAINLESS STEEL FLEXIBLE INLET PIPE
 - ⑮ 3/4" MINUS WASHED GRAVEL
 - ⑯ 5/8" X 48" REBAR STAKE AND STAINLESS STEEL PIPE CLAMPS
 - ⑰ PROVIDE DRAINAGE VIA FIELD DRAINAGE SYSTEM
 - ⑱ BRASS MANUAL BALL VALVE (INCLUDED WITH ST-BVF30K)
 - ⑲ HUNTER ST-IBS1600 RUBBER COVER AND INFILL BARRIER KIT WITH TRIM REFERENCE RINGS TO ALLOW HEIGHTS FROM 1-1/4" [32MM] TO FLAT (SYNTHETIC TURF WITH INFILL TO TRACK MATERIALS APPLICATIONS)
 - ⑳ HUNTER ST-BKT1600 ROTOR HANGER AND ELEVATION ADJUSTMENT BRACKET
 - ㉑ HUNTER ST-1600B ROTOR
 - ㉒ ISOLATION VALVE: BUTTERFLY TYPE WITH GROOVED CONNECTIONS (INCLUDED WITH ST-BVF30K)
 - ㉓ HUNTER ST-FRP1600 MATERIAL ATTACHED TO FLATTENED ST-IBS1600 USING HUNTER ST-ADH ADHESIVE AND APPROVED PROCEDURES
 - ㉔ WRAP FLEXIBLE INLET PIPING WITH HEAVY-DUTY PLASTIC PIPE WRAP TAPE PRIOR TO BACKFILL AND COMPACTION
 - ㉕ BASE PAD AS SPECIFIED, 42" X 48" [107 X 122CM] MINIMUM
- *ENCLOSURE DIMENSIONS
 4 - PIECE COVER - 24" X 36" [50CM X 76CM]
 EXPOSED RIM - 26" X 38" [66CM X 96.5CM]
 OVERALL HEIGHT - 36" [76CM]



SYNTHETIC TURF KIT (STK-6V) WITH VALVE ADJACENT HEAD IN RUBBER SURFACING

Hunter® STK.6V.02

NO SCALE