

ZONE 1
FRONTAGES

ZONE 2
LABATH AVE
ACCESS

ZONE 3
PARKING AND
PERIMETER

ZONE 5A AND 5B
BUILDING

ZONE 4
BASINS AND
SWALES

IRRIGATION SPRINKLER LEGEND

SYMBOL	BODY DESCRIPTION	NOZZLE DESCRIPTION	RADIUS	FLOW	PSI	PRECIP. RATE (INCHES)	PATTERN
◇	HUNTER I-20-12	HUNTER I-20 3.0 SR	25 FT.	3.0 GPM	50	1.07	FULL
◇	HUNTER I-20-12	HUNTER I-20 1.5 SR	25 FT.	1.5 GPM	50	0.53	HALF
◇	HUNTER I-20-12	HUNTER I-20 .75 SR	25 FT.	0.75 GPM	50	0.27	QUARTER
▽	HUNTER I-20-12	HUNTER I-20 2.0 SR	20 FT.	2.0 GPM	50	1.37	FULL
▽	HUNTER I-20-12	HUNTER I-20 1.0 SR	20 FT.	1.0 GPM	50	0.69	HALF
▽	HUNTER I-20-12	HUNTER I-20 .50 SR	20 FT.	0.50 GPM	50	0.34	QUARTER
●	HUNTER PROS-12-PRS4-CV	HUNTER MP3000-360	22-30 FT.	3.64 GPM	40	0.45	FULL
●	HUNTER PROS-12-PRS4-CV	HUNTER MP3000-180	22-30 FT.	1.82 GPM	40	0.45	HALF
●	HUNTER PROS-12-PRS4-CV	HUNTER MP3000-90	22-30 FT.	0.86 GPM	40	0.45	QUARTER
●	HUNTER PROS-12-PRS4-CV	HUNTER MP2000-360	13-21 FT.	1.47 GPM	40	0.45	FULL
●	HUNTER PROS-12-PRS4-CV	HUNTER MP2000-180	13-21 FT.	0.74 GPM	40	0.45	HALF
●	HUNTER PROS-12-PRS4-CV	HUNTER MP2000-90	13-21 FT.	0.40 GPM	40	0.45	QUARTER
●	HUNTER PROS-12-PRS4-CV	HUNTER MP1000-360	8-15 FT.	0.75 GPM	40	0.45	FULL
●	HUNTER PROS-12-PRS4-CV	HUNTER MP1000-180	8-15 FT.	0.37 GPM	40	0.45	HALF
●	HUNTER PROS-12-PRS4-CV	HUNTER MP1000-90	8-15 FT.	0.19 GPM	40	0.45	QUARTER
●	HUNTER PROS-12-PRS4-CV	HUNTER MPSS530	5x30 FT.	0.44 GPM	40	---	SIDE STRIP
●	HUNTER PROS-12-PRS4-CV	HUNTER MPLCS515	5x15 FT.	0.22 GPM	40	---	LEFT STRIP
▲	HUNTER PROS-12-CV	HUNTER PRO SPRAY 8F	8 FT.	0.97 GPM	40	1.46	FULL
▲	HUNTER PROS-12-CV	HUNTER PRO SPRAY 8H	8 FT.	0.47 GPM	40	1.41	HALF
▲	HUNTER PROS-12-CV	HUNTER PRO SPRAY 8Q	8 FT.	0.24 GPM	40	1.46	QUARTER
○	HUNTER PROS-06-CV	HUNTER 5-CTS-B	5 FT.	0.40 GPM	30	---	DUAL STREAM
○	HUNTER PROS-06-CV	HUNTER MSBN-20F	3 FT.	2.0 GPM	30	---	STREAM
○	HUNTER RW5-36-CV	HUNTER PCN-50	---	0.50 GPM	30	---	TRICKLE
○	HUNTER RW5-10-CV	HUNTER PCN-25	---	0.25 GPM	30	---	TRUCKLE

1. CONTRACTOR SHALL ADJUST RADIUS AS NEEDED ON ALL SPRAY NOZZLES IN ORDER TO AVOID OVERSPRAY ONTO WALKS AND BUILDINGS AND TO PREVENT SPRAY FROM BEING DIRECTED OUTSIDE THE BOUNDARIES OF THE LANDSCAPE AREA.

IRRIGATION MAINLINE EQUIPMENT

SYMBOL	MANUFACTURER	MODEL	DESCRIPTION
---	---	---	8" POINT OF CONNECTION. SEE CIVIL IMPROVEMENT PLANS FOR MORE INFORMATION. VERIFY LOCATION IN FIELD.
◆	NIBCO	F-619	FLANGED GATE VALVE (LINE SIZE 3" AND LARGER). PROVIDE IN VALVE BOX PER DETAIL A, L1.8
◆	NIBCO	T-113	THREADED GATE VALVE (LINE SIZE 2-1/2" AND SMALLER). PROVIDE IN VALVE BOX PER DETAIL B, L1.8.
S	HUNTER	HFS	FLOW SENSOR (SIZE PER PLAN). CONNECT TO 2-WIRE PATH USING ICD-SEN DECODER. INSTALL PER MANUFACTURER'S SPECIFICATIONS. SEE DETAIL B, L1.7.
M	HUNTER	ICV	NORMALLY CLOSED MASTER VALVE (SIZE PER PLAN). CONNECT TO 2-WIRE PATH USING ICD-100 DECODER. INSTALL PER MANUFACTURER'S SPECIFICATIONS.
F			FERTILIZER INJECTION SYSTEM.
P	CUSTOM PUMP & POWER	XX	BOOSTER PUMP PACKAGE: CUSTOM FLOW PUMP MODEL XX VFD WITH THREE PHASE, 230 POWER REQUIREMENT. THE UNIT IS RATED FOR XX GPM AT XX PSI INCREASE. PUMP BY CUSTOM PUMP & POWER, INC. TELEPHONE NUMBER: 916/429 9729. SEE DETAIL H, L1.8.
○	HUNTER	HQ-44-LRC	QUICK COUPLING VALVE WITH LOCKING RUBBER COVER. PROVIDE IN VALVE BOX PER DETAIL D, L1.7.
○	HUNTER	ICV SERIES	REMOTE CONTROL VALVE. SEE PLAN FOR SIZE. PROVIDE IN VALVE BOX PER DETAIL C, L1.8.
⊕	HUNTER	IC2101	REMOTE CONTROL DRIP VALVE. SEE PLAN FOR SIZE. PROVIDE IN VALVE BOX.

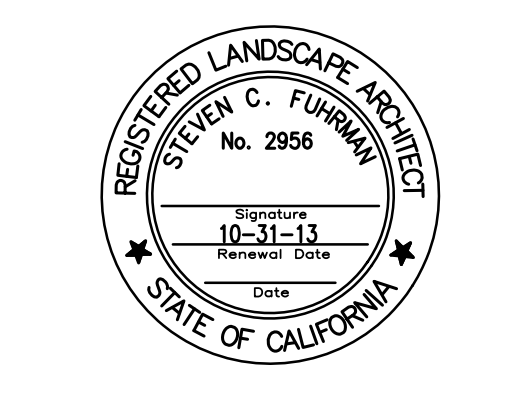
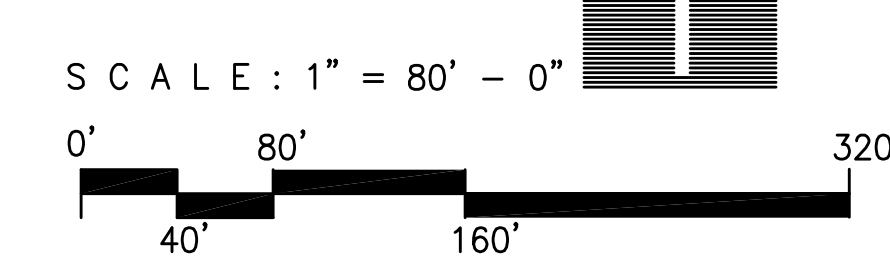
IRRIGATION TWO-WIRE EQUIPMENT

SYMBOL	MANUFACTURER	MODEL	DESCRIPTION
A	I.T.S.	IC46-HU5/99-ICD-1/1-ICD-5/FS150/A-ICV300/M/P/ICR-RA/SOLSE/2-FRT-RLY/SP/MP16	99 STATION 2-WIRE CONTROLLER WITH SOLAR SYNC AND ICR KIT. PROVIDE IN PACKAGED CONTROLLER ASSEMBLY FROM I.T.S. PROVIDE DECODER AT EACH GROUP OF VALVES. LOCATION AND SIZE OF DECODER PER PLANS. CONNECT DECODERS TO CONTROLLER USING 2-WIRE SYSTEM. PROVIDE SURGE PROTECTION EVERY 500 FT. ALONG TWO-WIRE PATH. CONTACT ANDREW BOLT AT ARCHITECTURAL SOLUTIONS (209) 404-1746 FOR PRE-CONSTRUCTION MEETING AND LETTER OF CERTIFICATION. INSTALL PER MANUFACTURER'S SPECIFICATIONS AT LOCATION SHOWN ON PLAN. SEE DETAIL A, SHEET L1.7.
B	I.T.S.	IC46-HU5/99-ICD-1/1-ICD-5/FS150/A-ICV300/M/P/ICR-RA/SOLSE/2-FRT-RLY/SP/MP16	99 STATION 2-WIRE CONTROLLER WITH SOLAR SYNC AND ICR RECEIVER UNIT. PROVIDE IN PACKAGED CONTROLLER ASSEMBLY FROM I.T.S. PROVIDE DECODER AT EACH GROUP OF VALVES. LOCATION AND SIZE OF DECODER PER PLANS. CONNECT DECODERS TO CONTROLLER USING 2-WIRE SYSTEM. PROVIDE SURGE PROTECTION EVERY 500 FT. ALONG TWO-WIRE PATH. CONTACT ANDREW BOLT AT ARCHITECTURAL SOLUTIONS (209) 404-1746 FOR PRE-CONSTRUCTION MEETING AND LETTER OF CERTIFICATION. INSTALL PER MANUFACTURER'S SPECIFICATIONS AT LOCATION SHOWN ON PLAN. SEE DETAIL A, SHEET L1.7.
C	I.T.S.	IC46-HU5/99-ICD-1/1-ICD-5/FS150/A-ICV300/M/P/ICR-RA/SOLSE/2-FRT-RLY/SP/MP16	99 STATION 2-WIRE CONTROLLER WITH SOLAR SYNC AND ICR RECEIVER UNIT. PROVIDE IN PACKAGED CONTROLLER ASSEMBLY FROM I.T.S. PROVIDE DECODER AT EACH GROUP OF VALVES. LOCATION AND SIZE OF DECODER PER PLANS. CONNECT DECODERS TO CONTROLLER USING 2-WIRE SYSTEM. PROVIDE SURGE PROTECTION EVERY 500 FT. ALONG TWO-WIRE PATH. CONTACT ANDREW BOLT AT ARCHITECTURAL SOLUTIONS (209) 404-1746 FOR PRE-CONSTRUCTION MEETING AND LETTER OF CERTIFICATION. INSTALL PER MANUFACTURER'S SPECIFICATIONS AT LOCATION SHOWN ON PLAN. SEE DETAIL A, SHEET L1.7.
S	HUNTER	ICD-SEN	SENSOR DECODER. INSTALL PER MANUFACTURER'S SPECIFICATIONS IN ONE OF THE GROUP'S VALVE BOXES. SEE DETAIL C, L1.7.
②	HUNTER	ICD-200	TWO ADDRESS DECODER. PROVIDE SURGE PROTECTION. INSTALL PER MANUFACTURER'S SPECIFICATIONS IN ONE OF THE GROUP'S VALVE BOXES. SEE DETAIL C, L1.7.
④	HUNTER	ICD-400	FOUR ADDRESS DECODER WITH BUILT IN SURGE PROTECTION. INSTALL PER MANUFACTURER'S SPECIFICATIONS IN ONE OF THE GROUP'S VALVE BOXES. SEE DETAIL C, L1.7.
⑥	HUNTER	ICD-600	SIX ADDRESS DECODER WITH BUILT IN SURGE PROTECTION. INSTALL PER MANUFACTURER'S SPECIFICATIONS IN ONE OF THE GROUP'S VALVE BOXES. SEE DETAIL C, L1.7.

IRRIGATION PIPING

SYMBOL	TYPE	DESCRIPTION
---	CONTROLLER A PRESSURE MAIN LINE	PVC CLASS 200 O-RING FOR SIZES 3" AND LARGER, PVC CLASS 315 FOR SIZES 2-1/2" AND SMALLER (SIZE AS NOTED). INSTALL #10 BARE COPPER TRACER WIRE THE ENTIRE LENGTH OF THE MAIN LINE.
---	CONTROLLER B PRESSURE MAIN LINE	PVC CLASS 200 O-RING FOR SIZES 3" AND LARGER, PVC CLASS 315 FOR SIZES 2-1/2" AND SMALLER (SIZE AS NOTED). INSTALL #10 BARE COPPER TRACER WIRE THE ENTIRE LENGTH OF THE MAIN LINE.
---	CONTROLLER C PRESSURE MAIN LINE	PVC CLASS 200 O-RING FOR SIZES 3" AND LARGER, PVC CLASS 315 FOR SIZES 2-1/2" AND SMALLER (SIZE AS NOTED). INSTALL #10 BARE COPPER TRACER WIRE THE ENTIRE LENGTH OF THE MAIN LINE.
---	NON-PRESSURE LATERAL	PVC CLASS 200 (SIZE AS NOTED)
---	NON-PRESSURE LATERAL	SCH. 40 PVC (SIZE AS NOTED) DIRECT BURY BETWEEN TREE WELLS IN PARKING LOT.
---	CONDUIT	PVC SCHEDULE 40 - 2" MIN. DIAMETER FOR LOW VOLTAGE WIRING.
Ⓟ	PULL BOX	PROVIDE FOR LOW VOLTAGE WIRING.
---	SLEEVE	PVC SCHEDULE 40 - TWICE THE DIAMETER OF THE LINE SIZE MINIMUM OR AS NOTED ON PLAN. INSTALL 24" BELOW FINISHED GRADE. EXTEND 12" PAST END OF PAVING.
A1		INDICATES CONTROLLER LETTER DESIGNATION AND STATION NUMBER
13.0		INDICATES FLOW IN GALLONS PER MINUTE
1"		INDICATES ELECTRIC CONTROL VALVE SIZE
R		INDICATES TYPE OF IRRIGATION DEVICE. R = ROTOR, S = SPRAY, BUB = BUBBLER, MP = MP ROTATOR.

NOTES:
PLAN IS DIAGRAMMATIC.
LOCATE IRRIGATION MAIN,
VALVES & QCVS IN PLANTING
AREA ALONG BACK OF WALK
OR CURB, TYP.



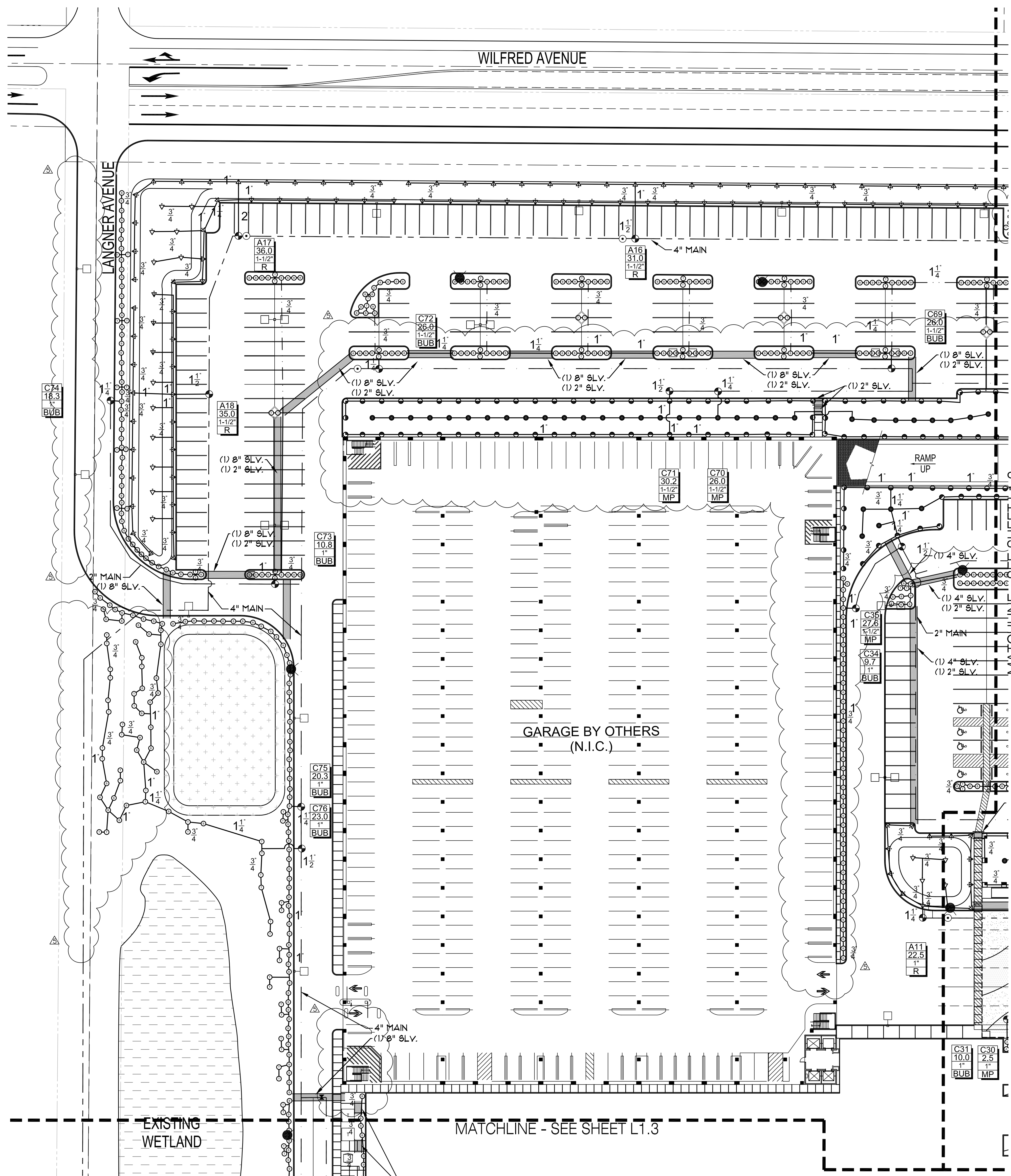
REVISIONS:
LANDSCAPE REVISIONS
GENERAL REVISIONS
AUGUST 6, 2015

FEDERATED
INDIANS OF
GRATON RANCHERIA
CASINO
BUILD-OUT
ROBERT PARK,
CALIFORNIA

KGA ARCHITECTURE
9075 West Diablo Drive, Third Floor 1701 Directors Boulevard, Suite 770
Las Vegas, Nevada 89148 Austin, Texas 78744
702.367.8160 312.441.6269
www.kgaarchitecture.com
LAS VEGAS, NEVADA
AUSTIN, TEXAS

CONSULTANTS:
DESIGN: FRIEDMUTTER GROUP
TELEPHONE: 702-738-7407
DESIGN: HATCH DESIGN GROUP
TELEPHONE: 714-974-4385
DESIGN: DNL ARCHITECTURE
TELEPHONE: 702-964-0880
STRUCTURAL ENGINEER: JOHN A. MARTIN & ASSOCIATES
TELEPHONE: 702-964-7666
MECH. PLUMB. ELEC. LOW VOLT. & L.S. ENGINEER: JBA CONSULTING ENGINEERS
TELEPHONE: 702-952-8550
LANDSCAPE ARCHITECT: FURBERMAN LEAMY LAND GROUP
TELEPHONE: 954-763-0363
LIGHTING: ILLUMINATING CONCEPTS
TELEPHONE: 348-99-525
OUTDOOR SWIMMING: JBA CONSULTING WEST
TELEPHONE: 702-794-4422
ADA REVIEW DESIGN: ENDELMAN & ASSOCIATES
TELEPHONE: 302-334-4442
FOOD SERVICE DESIGN: CULINARY DESIGN & FIXTURE INC.
TELEPHONE: 702-896-2855
PROFESSIONAL: SASC SOUTHWEST
TELEPHONE: 480-947-0088

PROJECT:
SITE AND UNDERGROUND
IRRIGATION PLAN
SHEET CONTENTS:
LANDSCAPE IRRIGATION PLAN
DATE:
MAY 14, 2012
JOB NO.:
TI-908
SHEET:
L1.0



GENERAL IRRIGATION NOTES

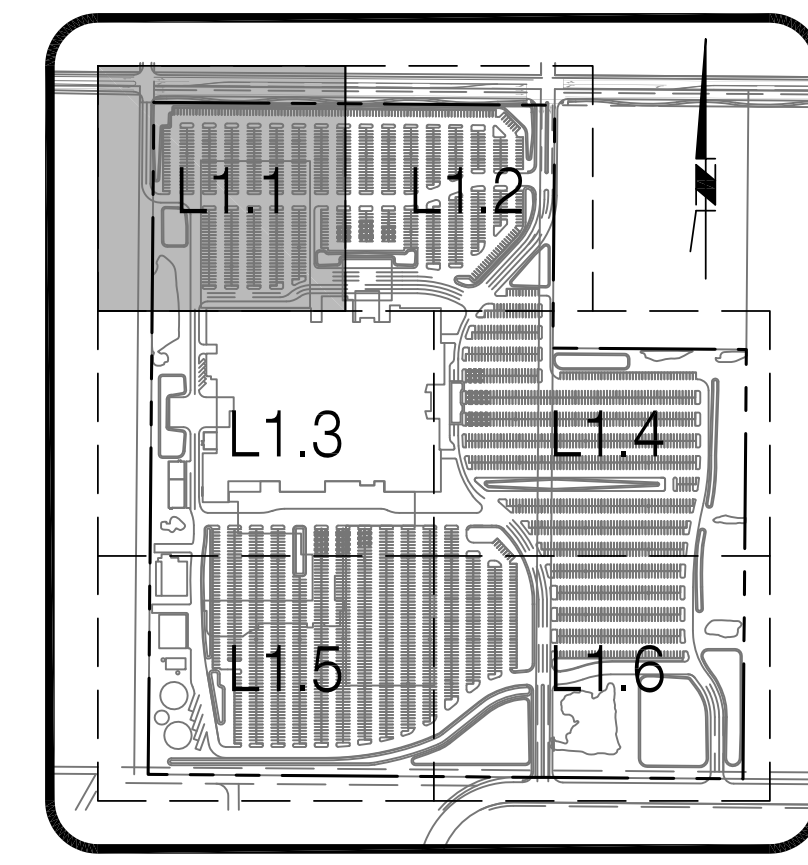
- ALL POP-UP TYPE SPRINKLER HEADS INSTALLED IN SHRUB OR GROUND COVER AREAS SHALL BE INSTALLED SO THAT THE TOP OF THE SPRINKLER HEAD IS 1" ABOVE FINISH GRADE.
- ALL POP-UP TYPE SPRINKLER HEADS INSTALLED IN TURF AREAS SHALL BE INSTALLED SO THAT THE TOP OF THE SPRINKLER HEAD IS FLUSH WITH ADJACENT SIDEWALK OR CURB.
- IN OPEN SEEDED TURF AREAS, SET TOP OF POP-UP TYPE SPRINKLER HEADS 3" ABOVE FINISH GRADE UNTIL TURF IS SEED. LOWERING OF ALL TURF HEADS BY THE IRRIGATION CONTRACTOR SO THAT THE TOP OF THE SPRINKLER HEAD IS 1/4" ABOVE FINISH GRADE, SHALL BE ACCOMPLISHED AFTER SPRAY ARCS ARE CERTIFIED BY THE OWNER'S AUTHORIZED REPRESENTATIVE AND BEFORE THE APPLICATION OF SEED.
- ALL SPRINKLER HEADS SHALL BE SET PERPENDICULAR TO FINISH GRADE OF THE AREA TO BE IRRIGATED UNLESS OTHERWISE DESIGNATED ON THE PLANS.
- THE SPRINKLER SYSTEM DESIGN IS BASED ON THE MINIMUM OPERATING PRESSURE OF 75 PSI AND THE MAXIMUM FLOW OF 160 GPM AS SHOWN ON THE IRRIGATION DRAWINGS AT THE METER OR POINT OF CONNECTION. THE IRRIGATION CONTRACTOR SHALL VERIFY WATER PRESSURE PRIOR TO CONSTRUCTION. REPORT ANY DIFFERENCE BETWEEN THE WATER PRESSURE IRRIGATION POINT OF CONNECTION TO THE OWNER'S AUTHORIZED REPRESENTATIVE. IN THE EVENT THAT PRESSURE DIFFERENCES ARE NOT REPORTED PRIOR TO THE START OF CONSTRUCTION, THE IRRIGATION CONTRACTOR SHALL ASSUME FULL RESPONSIBILITY FOR ANY REVISIONS NECESSARY.
- 120 VOLT ELECTRICAL POWER OUTLET AT THE AUTOMATIC CONTROLLER LOCATION SHALL BE PROVIDED BY OTHERS. IT SHALL BE THE RESPONSIBILITY OF THE IRRIGATION CONTRACTOR TO MAKE THE FINAL HOOK-UP FROM THE ELECTRICAL OUTLET TO THE AUTOMATIC CONTROLLER.
- THIS DESIGN IS DIAGRAMMATIC. ALL PIPING, VALVES, ETC. SHOWN WITHIN PAVED AREAS IS FOR DESIGN CLARIFICATION ONLY AND SHALL BE INSTALLED IN PLANTING AREAS. AVOID ANY CONFLICTS BETWEEN THE SPRINKLER SYSTEM, PLANTING AND ARCHITECTURAL FEATURES.
- THE IRRIGATION CONTRACTOR SHALL FLUSH AND ADJUST ALL SPRINKLER HEADS FOR OPTIMUM PERFORMANCE AND TO PREVENT OVER-SPRAY ONTO WALKS, ROADWAYS AND/OR BUILDINGS AS MUCH AS POSSIBLE. THIS SHALL INCLUDE SELECTING THE BEST DEGREE OF ARC TO FIT THE EXISTING SITE CONDITIONS AND TO THROTTLE THE FLOW CONTROL AT EACH VALVE TO OBTAIN THE OPTIMUM OPERATING PRESSURE FOR EACH SYSTEM.
- DO NOT WILLFULLY INSTALL THE SPRINKLER SYSTEM AS SHOWN ON THE DRAWINGS WHEN IT IS OBVIOUS IN THE FIELD THAT OBSTRUCTIONS, GRADE DIFFERENCES OR DIFFERENCES IN THE AREA DIMENSIONS EXIST THAT MIGHT NOT HAVE BEEN CONSIDERED IN THE ENGINEERING. SUCH OBSTRUCTIONS OR DIFFERENCES SHOULD BE BROUGHT TO THE ATTENTION OF THE OWNER'S AUTHORIZED REPRESENTATIVE. IN THE EVENT THAT THIS NOTIFICATION IS NOT PERFORMED, THE IRRIGATION CONTRACTOR SHALL ASSUME FULL RESPONSIBILITY FOR ANY REVISIONS NECESSARY.
- INSTALL ALL PIPE MATERIALS AND EQUIPMENT AS SHOWN IN THE DETAILS. USE TEFLON TAPE OR TEFLON PIPE DOPE ON ALL PVC MALE PIPE THREADS ON ALL SPRINKLER SWING JOINT AND VALVE ASSEMBLIES.
- IT IS THE RESPONSIBILITY OF THE IRRIGATION CONTRACTOR TO FAMILIARIZE HIMSELF WITH ALL GRADE DIFFERENCES, LOCATION OF WALLS, RETAINING WALLS, ETC. HE SHALL COORDINATE HIS WORK WITH THE GENERAL CONTRACTOR AND OTHER SUB-CONTRACTORS FOR THE LOCATION AND THE INSTALLATION OF PIPE SLEEVES THROUGH WALLS, UNDER ROADWAYS, PAVINGS, STRUCTURES, ETC.
- IN ADDITION TO THE CONTROL WIRE SLEEVES SHOWN ON THE DRAWINGS, THE IRRIGATION CONTRACTOR SHALL BE RESPONSIBLE FOR THE INSTALLATION OF CONTROL WIRE SLEEVES OF SUFFICIENT SIZE UNDER ALL OTHER PAVED AREAS.
- CONTRACTOR SHALL PROGRAM IRRIGATION CONTROLLER TO OPERATE AS FOLLOWS POST-CONSTRUCTION SPRAY VALVES SHALL ONLY BE TURNED ON BETWEEN THE HOURS OF 10:00 P.M. AND 6:00 A.M. BUBBLER AND DRIP VALVES CAN OPERATE AT ANY TIME.

DRAINAGE NOTE:

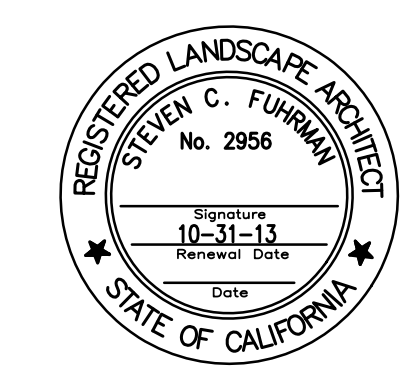
DRAINAGE OF IRRIGATION WATER THROUGH SPRINKLER HEADS WILL NOT BE ALLOWED. SOME PORTIONS OF THE IRRIGATION SYSTEM MAY REQUIRE THE FIELD INSTALLATION OF CHECK VALVES IN THE SPRINKLER HEADS AT THE LOWEST POINT IN THE SYSTEM AND/OR AT THE POINT OF CONNECTION TO PREVENT DRAINAGE. DURING THE COURSE OF CONSTRUCTION THE CONTRACTOR SHALL INSTALL POP-UP SPRAY HEADS WITH "CHECK VALVE" FEATURE AS REQUIRED AT ANY SPRINKLER HEAD SHOWING SIGNS OF DRAINAGE AFTER THE IRRIGATION SYSTEM HAS OPERATED FROM AN ON TO AN OFF POSITION. INSTALLATION OF "CHECK VALVE" FEATURE SHALL BE INCLUDED IN THE BID PRICE WITHOUT ADDITIONAL COST TO THE OWNER.

NON-POTABLE WATER NOTES

- VALVES 4" AND LARGER PLACED AT TEES, CROSSES, AND ELBOWS SHALL BE FLANGED AND BOLTED TO THE FITTINGS. VALVES SHALL BE RESTRAINED AS PER MANUFACTURER'S RECOMMENDATIONS.
- THE METHOD OF CONNECTION TO NON-POTABLE SUPPLY MAIN SHALL BE HOT TAP OR DIRECT CONNECTION STUB.
- PIPE JOINTS WILL NOT BE ALLOWED WITHIN SIX FEET (6') OF A VALVE OR FITTING.
- UNDER NO CIRCUMSTANCES SHALL PIPE OR JOINT DEFLECTION EXCEED MANUFACTURER'S RECOMMENDATIONS. DEFLECTION OF PIPE WILL NOT BE ALLOWED WITHIN TEN FEET (10') OF ANY VALVE OR FITTING.
- ALL NON-POTABLE WATER MAINS SHALL BE EQUIPPED WITH AN INSULATED TEN (10) GAUGE COPPER TRACER WIRE ALONG THE PIPE ENTIRETY. LOCATING WIRE SHALL EXTEND INTO EACH VALVE BOX AND BE INSTALLED AS PER DRAWINGS. ALL SPLICES SHALL BE SOLDERED AND SHRINK-WRAPPED OR TAPED.
- ALL PIPING UNDER STATIC PRESSURE SHALL BE WRAPPED WITH PURPLE COLOR, 3" WIDTH, 1" LETTERS, PANATONE 512, POLYETHYLENE TAPE, WITH THE WORDS "CAUTION: NON-POTABLE WATER - DO NOT DRINK". TAPE SHALL BE INSTALLED ON TOP OF THE PIPE LONGITUDINALLY AND SHALL BE CENTERED. THE IDENTIFICATION SHALL BE CONTINUOUS IN THEIR COVERAGE ON THE PIPE AND SHALL BE FASTENED SECURELY TO EACH PIPE LENGTH NO MORE THAN FIVE (5) FEET APART.
- MINIMUM HORIZONTAL SEPARATION BETWEEN PARALLEL NON-POTABLE AND POTABLE WATER LINES SHALL BE TEN (10') FEET.
- MINIMUM VERTICAL SEPARATION BETWEEN CROSSING NON-POTABLE AND POTABLE WATER LINES SHALL BE ONE (1') FOOT. THE CROSSING OF A NON-POTABLE LINE SHALL BE BELOW THE POTABLE LINE WHENEVER POSSIBLE.
- THE TOP OF A NON-POTABLE LINE SHALL BE A MINIMUM OF THIRTY (30") INCHES BELOW FINISHED GRADE.
- VALVE BOXES SHALL BE REINFORCED CONCRETE WITH A PURPLE, PANATONE 241, COLOR POLYETHYLENE FACE, AND LID WITH THE WORDS "NON-POTABLE WATER" STAMPED INTO THE FACE. CHRISTY F-SERIES CURB VALVE BOX OR EQUAL.
- QUICK COUPLERS SHALL BE MARKED TO INDICATE THE USE OF NON-POTABLE WATER WITH WARNINGS IN BOTH ENGLISH AND SPANISH. QUICK COUPLERS SHALL BE MANUFACTURED SPECIFICALLY FOR NON-POTABLE USE AND HAVE THE WORDS "DO NOT DRINK" AND "NO TOMAR" ON THE COVER FACE.
- CONTROL VALVE BOXES SHALL BE RIGID PLASTIC WITH PURPLE PANATONE 241 COLOR WITH THE LID MADE FROM THE SAME MATERIAL. THE LID NEED NOT BE PURPLE. UNDER NO CIRCUMSTANCES SHALL BLUE COVERS BE USED.
- CONTROLLER CABINETS SHALL BE MARKED WITH A WARNING SIGN INSIDE AND OUT TO INDICATE THE USE OF NON-POTABLE WATER.
- PROVIDE ONE AIR-RELIEF VALVE ALONG THE NON-POTABLE LINE. CONTRACTOR TO COORDINATE PLACEMENT OF VALVE WITH PROJECT SITE SUPERINTENDENT AND LANDSCAPE ARCHITECT. PROVIDE PER MANUFACTURER'S SPECIFICATIONS.



KEY MAP



- REVISIONS:
- LANDSCAPE REVISIONS
 - GENERAL REVISIONS

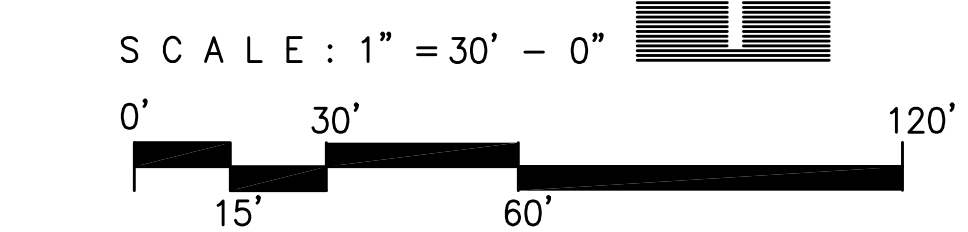
CALIFORNIA
 ROBERT PARK,
 GRATON RANCHERIA CASINO
 BUILD-OUT

KGA ARCHITECTURE
 9075 West Diablo Drive, Third Floor 1701 Directors Boulevard, Suite 770
 Las Vegas, Nevada 89148 Austin, Texas 78744
 702.307.7660 512.441.6260
 LAS VEGAS AUSTIN
 www.kgaarchitects.com

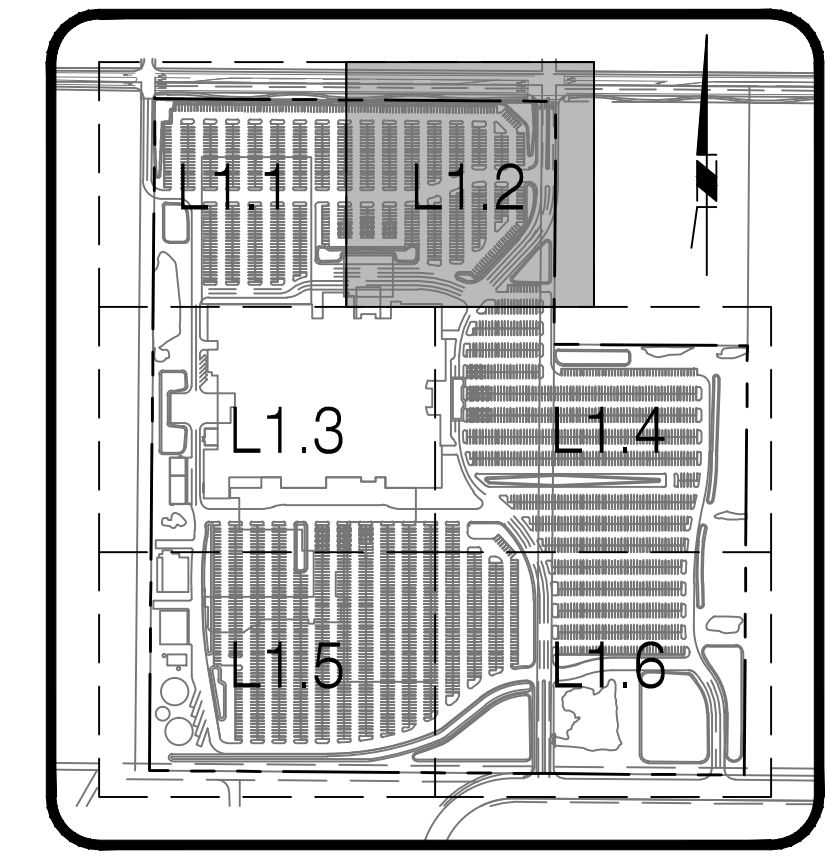
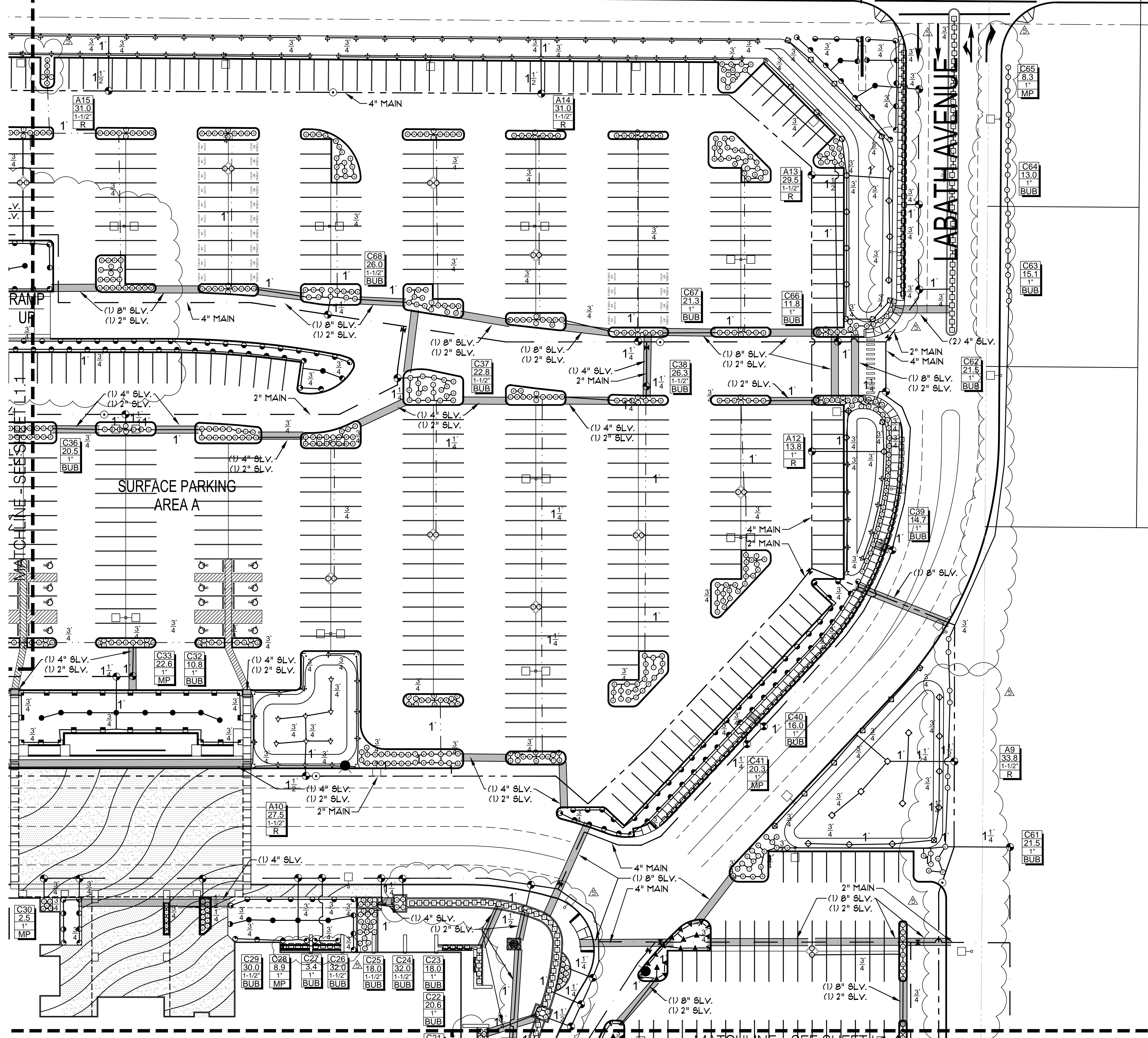
- CONSULTANTS:
- DESIGN: FRIEDMATTER GROUP TELEPHONE: 702-738-7407
 - DESIGN: HATCH DESIGN GROUP TELEPHONE: 714-974-4385
 - DESIGN: DNL ENGINEERING TELEPHONE: 702-964-0880
 - STRUCTURAL ENGINEER: JOHN A. MARTIN & ASSOCIATES TELEPHONE: 702-968-7888
 - MEDIA, PLUMB, ELEC, LOW VOLT, & L.S. ENGINEER: JBA CONSULTING ENGINEERS TELEPHONE: 702-582-8550
 - LANDSCAPE ARCHITECT: FURBERMAN LEAMY LAND GROUP TELEPHONE: 951-933-0343
 - LIGHTING: ILLUMINATING CONCEPTS TELEPHONE: 949-499-0252
 - EXTERIOR SIGNAGE: BJA CONSULTING WEST TELEPHONE: 702-794-4422
 - ADA REVIEW DESIGN: ENDELMAN & ASSOCIATES TELEPHONE: 302-334-4442
 - FOOD SERVICE DESIGN: CULINARY DESIGN & FIXTURE INC. TELEPHONE: 702-696-2855
 - PROFESSIONAL: SASC SOUTHWEST TELEPHONE: 480-947-0088

PROJECT: SITE AND UNDERGROUND PACKAGE
 SHEET CONTENTS: LANDSCAPE IRRIGATION PLAN
 DATE: MAY 14, 2012
 JOB NO.: TI-908
 SHEET: L1.1

NOTES:
 PLAN IS DIAGRAMMATIC. LOCATE IRRIGATION MAIN, VALVES & GCVS IN PLANTING AREA ALONG BACK OF WALK OR CURB, TYP.



AVENUE



KEY MAP



REVISIONS:
 LANDSCAPE REVISIONS
 GENERAL REVISIONS

ROBERT PARK, CALIFORNIA
 FEDERATED INDIANS OF GRATON RANCHERIA
 GRATON RANCHERIA CASINO BUILD-OUT

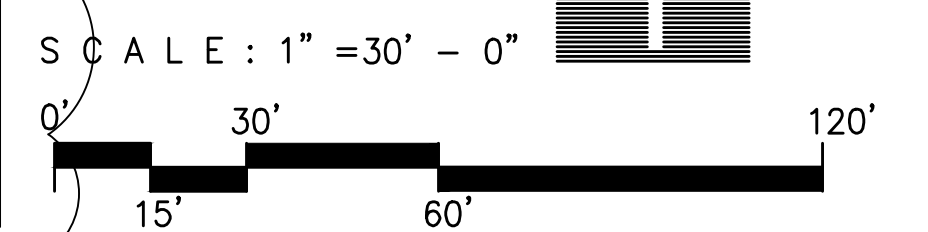
KGA ARCHITECTURE
 9075 West Diablo Drive, Third Floor
 Las Vegas, Nevada 89146
 702.367.8700
 www.kgaarchitecture.com
 AUSTIN

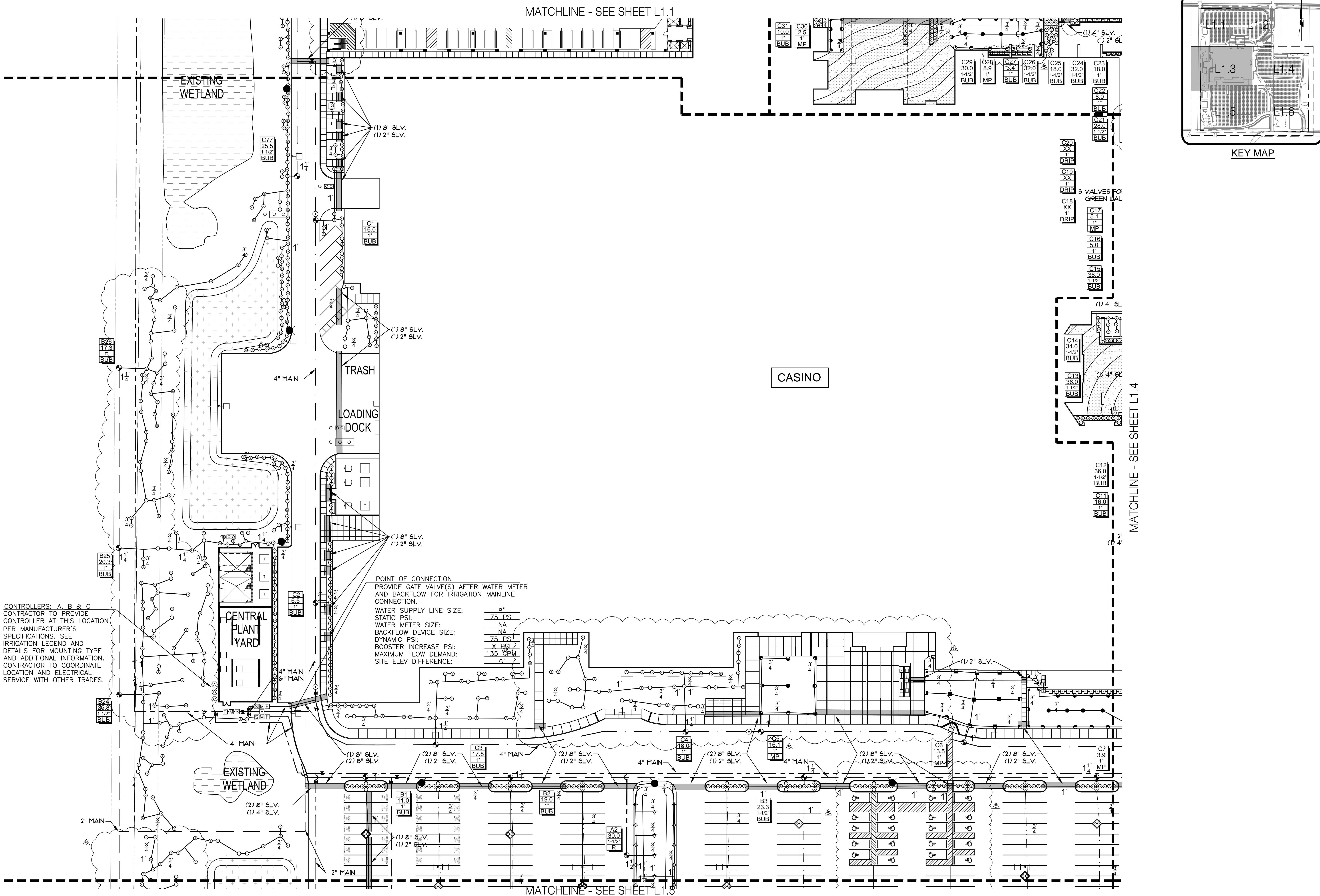
CONSULTANTS:
 DESIGN: FRIEMAN/UTTER GROUP
 ARCHITECTURE: HATCH DESIGN GROUP
 CIVIL ENGINEER: RFP CONSULTING
 STRUCTURAL ENGINEER: JOHN A. MARTIN & ASSOCIATES
 MECH. PLUMB. ELEC. LOW VOLT. & L.S. ENGINEER: JBA CONSULTING ENGINEERS
 LANDSCAPE ARCHITECT: FURBERMAN LEAMY LAND GROUP
 LIGHTING: ILLUMINATING CONCEPTS
 EXTERIOR PAVERS: BJA CONSULTING WEST
 ADA REVIEW DESIGN: ENDELMAN & ASSOCIATES
 FOOD SERVICE DESIGN: CULINARY DESIGN & FIXTURE INC.
 PHOTOGRAPHY: SASC SOUTHWEST

PROJECT: SITE AND UNDERGROUND PACKAGE
 SHEET CONTENTS: LANDSCAPE IRRIGATION PLAN
 DATE: MAY 14, 2012
 JOB NO.: TI-908
 SHEET:

L1.2

NOTES:
 PLAN IS DIAGRAMMATIC.
 LOCATE IRRIGATION MAIN,
 VALVES & GCVS IN PLANTING
 AREA ALONG BACK OF WALK
 OR CURB, TYP.





MATCHLINE - SEE SHEET L1.1

CASINO



KEY MAP

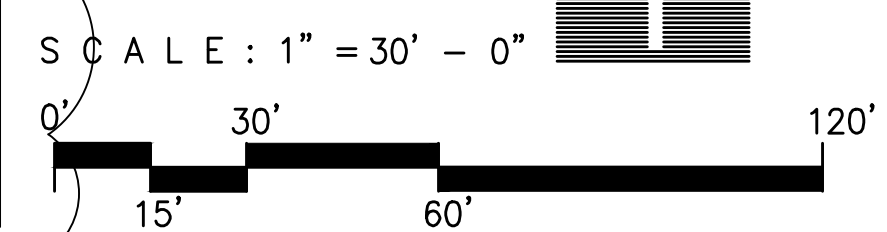
MATCHLINE - SEE SHEET L1.4

MATCHLINE - SEE SHEET L1.3

CONTROLLERS: A, B & C
 CONTRACTOR TO PROVIDE
 CONTROLLER AT THIS LOCATION
 PER MANUFACTURER'S
 SPECIFICATIONS. SEE
 IRRIGATION LEGEND AND
 DETAILS FOR MOUNTING TYPE
 AND ADDITIONAL INFORMATION.
 CONTRACTOR TO COORDINATE
 LOCATION AND ELECTRICAL
 SERVICE WITH OTHER TRADES.

POINT OF CONNECTION
 PROVIDE GATE VALVE(S) AFTER WATER METER
 AND BACKFLOW FOR IRRIGATION MAINLINE
 CONNECTION.
 WATER SUPPLY LINE SIZE: 8"
 STATIC PSI: 75 PSI
 WATER METER SIZE: NA
 BACKFLOW DEVICE SIZE: NA
 DYNAMIC PSI: 75 PSI
 BOOSTER INCREASE PSI: X PSI
 MAXIMUM FLOW DEMAND: 135 GPM
 SITE ELEV DIFFERENCE: 5'

NOTES:
 PLAN IS DIAGRAMMATIC.
 LOCATE IRRIGATION MAIN,
 VALVES & GCVS IN PLANTING
 AREA ALONG BACK OF WALK
 OR CURB, TYP.



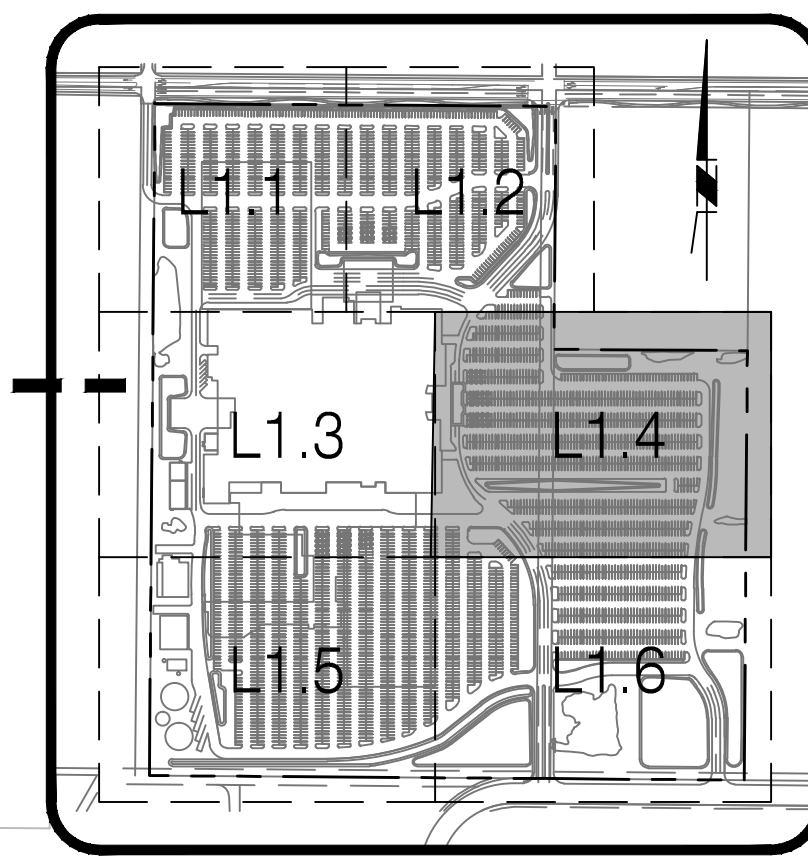
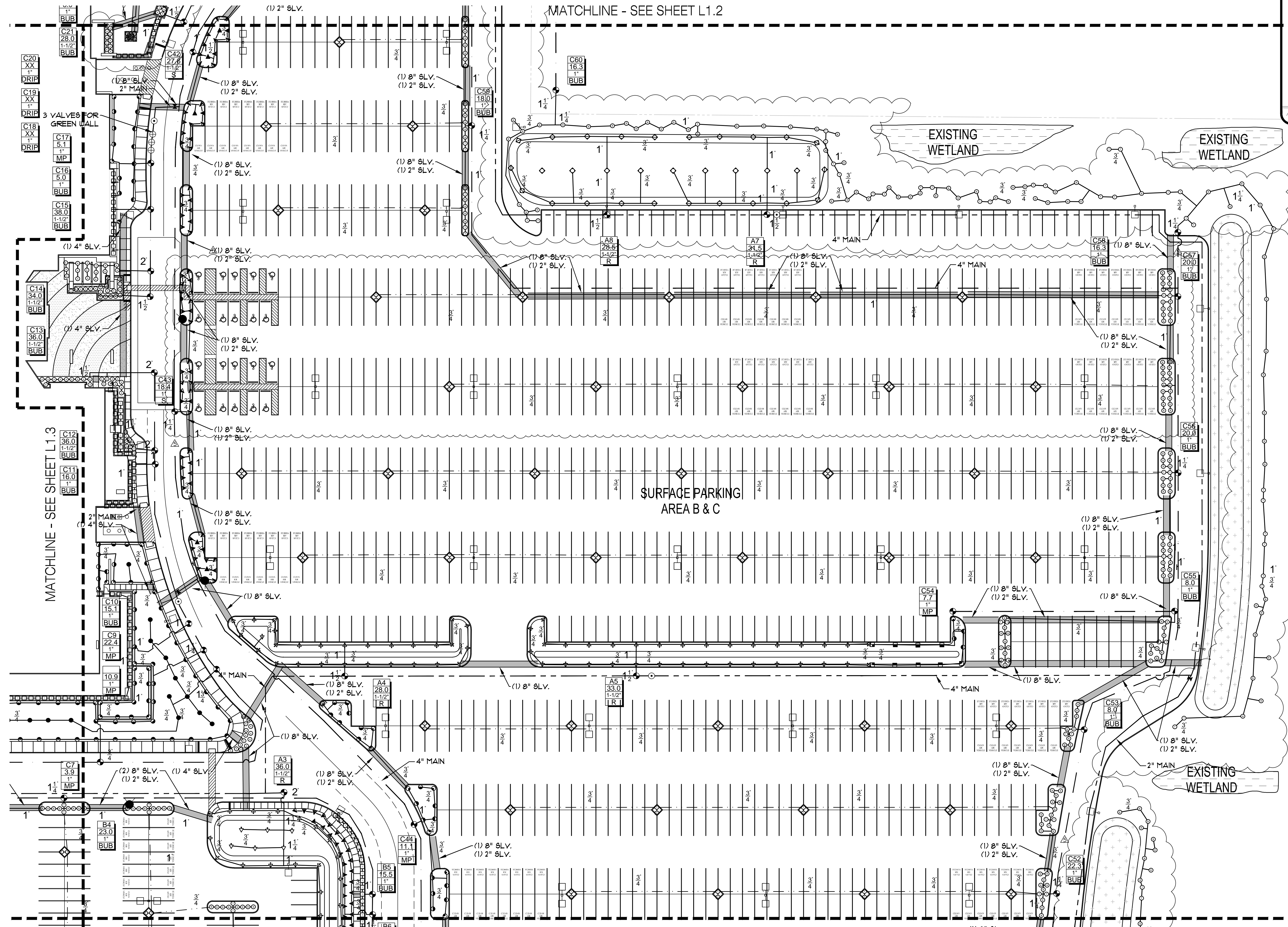
REVISIONS:
 LANDSCAPE REVISIONS
 GENERAL REVISIONS

ROHNET PARK,
 GRATON RANCHERIA CASINO
 BUILD-OUT
 CALIFORNIA

KGA ARCHITECTURE
 9075 West Diablo Drive, Third Floor
 Las Vegas, Nevada 89146
 702.367.8900
 www.kgaarchitecture.com
 AUSTIN

CONSULTANTS:
 DESIGN: FRIEDMATTER GROUP
 TELEPHONE: 702-736-7407
 DESIGN: MATCH DESIGN GROUP
 TELEPHONE: 714-974-8385
 CIVIL ENGINEER: RFP CONSULTING
 TELEPHONE: 702-364-0880
 STRUCTURAL ENGINEER: JOHN A. MARTIN & ASSOCIATES
 TELEPHONE: 702-948-7000
 MECH. PLUMB. ELEC. LOW VOLT. & L.S. ENGINEER: JBA CONSULTING ENGINEERS
 TELEPHONE: 702-362-8500
 LANDSCAPE ARCHITECT: FURMAN LEAMY LAND GROUP
 TELEPHONE: 951-910-0500
 LIGHTING: ILLUMINATING CONCEPTS
 TELEPHONE: 347-972-8200
 EXTERIOR PAVERS: BJA CONSULTING WEST
 TELEPHONE: 702-794-4422
 ADA REVIEW DESIGN: ENDELMAN & ASSOCIATES
 TELEPHONE: 302-334-4462
 FOOD SERVICE DESIGN: CULINARY DESIGN & FIXTURE INC.
 TELEPHONE: 702-695-4885
 PHOTOGRAPHY: SASC SOUTHWEST
 TELEPHONE: 602-967-0288

PROJECT:
 SITE AND UNDERGROUND PACKAGE
 SHEET CONTENTS:
 LANDSCAPE IRRIGATION PLAN
 DATE:
 MAY 14, 2012
 JOB NO.:
 TI-908
 SHEET:



REVISIONS:
 LANDSCAPE REVISIONS
 GENERAL REVISIONS

FEDERATED INDIANS OF GRATON RANCHERIA
 GRATON RANCHERIA CASINO BUILD-OUT
 ROBERT PARK, CALIFORNIA

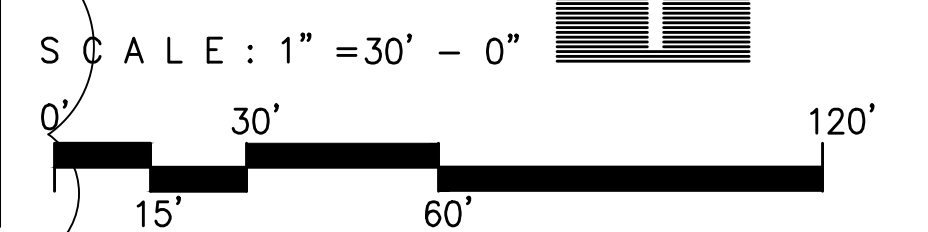
KGA ARCHITECTURE
 9075 West Diablo Drive, Third Floor 1701 Directors Boulevard, Suite 770
 Las Vegas, Nevada 89146 Austin, Texas 78744
 702.367.8700 512.441.6200
 LAS VEGAS AUSTIN
 www.kgaarchitect.com

CONSULTANTS:
 DESIGN: FURBUSH GROUP
 TELEPHONE: 702-738-7407
 DESIGN: HATCH DESIGN GROUP
 TELEPHONE: 714-974-4335
 CIVIL ENGINEER: RFP CONSULTING
 TELEPHONE: 702-364-0880
 STRUCTURAL ENGINEER: JOHN A. MARTIN & ASSOCIATES
 TELEPHONE: 702-364-7888
 MECH. PLUMB. ELEC. LOW VOLT. & L.S. ENGINEER: JBA CONSULTING ENGINEERS
 TELEPHONE: 702-364-8500
 LANDSCAPE ARCHITECT: FURBUSH LEAMY LAND GROUP
 TELEPHONE: 951-933-0303
 LIGHTING: ILLUMINATING CONCEPTS
 TELEPHONE: 360-979-2300
 EXTERIOR PAVERS: BJA CONSULTING WEST
 TELEPHONE: 702-794-4422
 ADA REVIEW DESIGN: ENDELMAN & ASSOCIATES
 TELEPHONE: 352-334-4462
 FOOD SERVICE DESIGN: CULINARY DESIGN & FIXTURE INC.
 TELEPHONE: 702-695-4855
 PHOTOGRAPHY: SASIC SOUTHWEST
 TELEPHONE: 602-97-0088

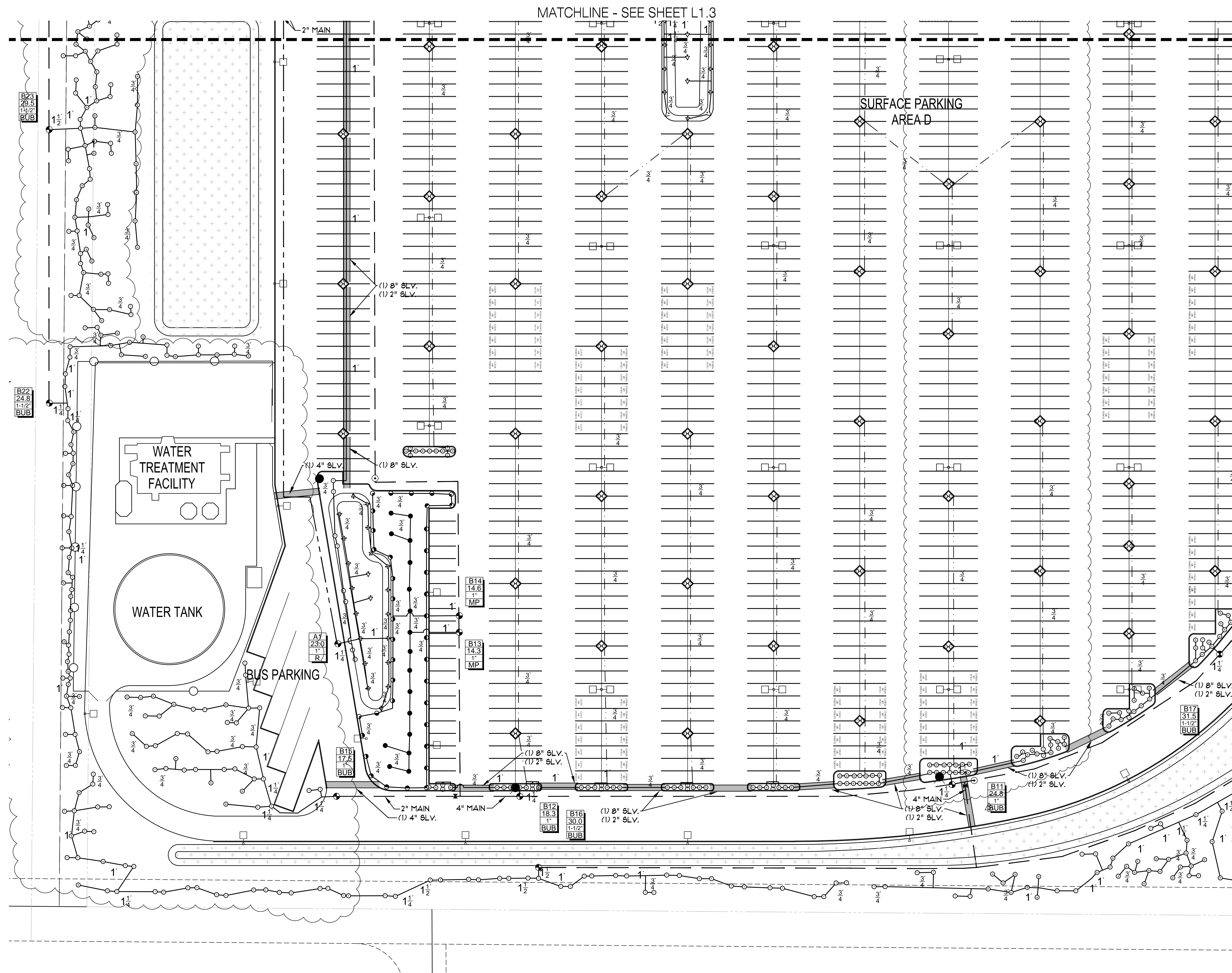
PROJECT: SITE AND UNDERGROUND PACKAGE
 SHEET CONTENTS: LANDSCAPE IRRIGATION PLAN
 DATE: MAY 14, 2012
 JOB NO.: TI-908
 SHEET:

L1.4

NOTES:
 PLAN IS DIAGRAMMATIC.
 LOCATE IRRIGATION MAIN,
 VALVES & GCVS IN PLANTING
 AREA ALONG BACK OF WALK
 OR CURB, TYP.

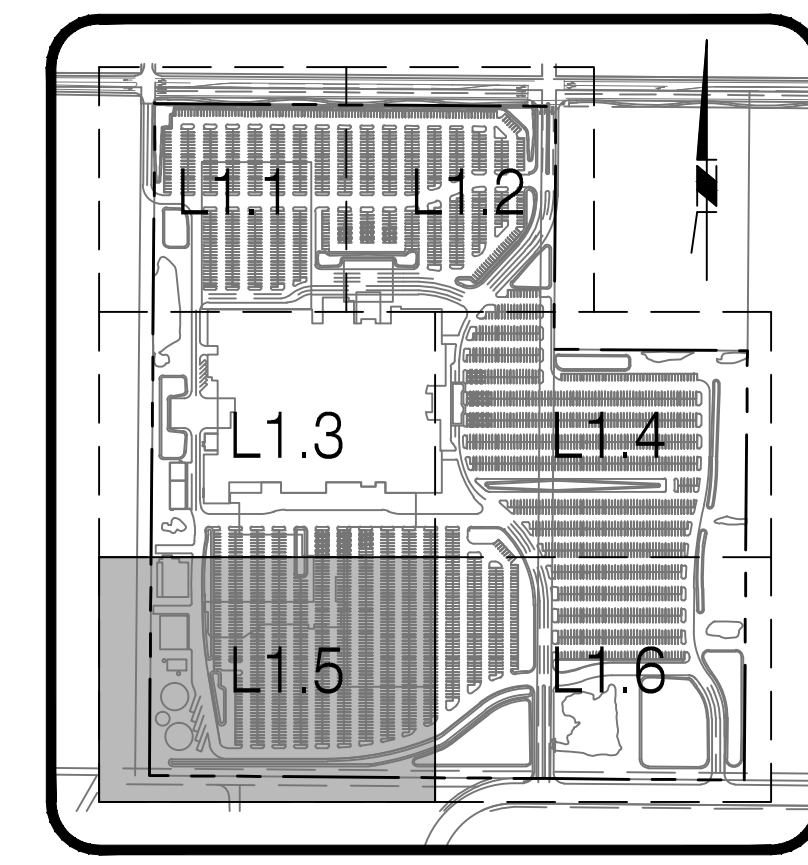


MATCHLINE - SEE SHEET L1.6



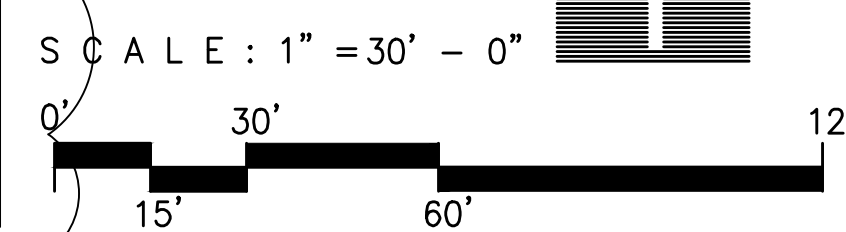
MATCHLINE - SEE SHEET L1.3

MATCHLINE - SEE SHEET L1.6



KEY MAP

NOTES:
 PLAN IS DIAGRAMMATIC.
 LOCATE IRRIGATION MAIN,
 VALVES & GCVS IN PLANTING
 AREA ALONG BACK OF WALK
 OR CURB, TYP.



REVISIONS:
 LANDSCAPE REVISIONS
 GENERAL REVISIONS

ROHNERT PARK, CALIFORNIA
 FEDERATED INDIANS OF GRATON RANCHERIA
 GRATON RANCHERIA CASINO BUILD-OUT

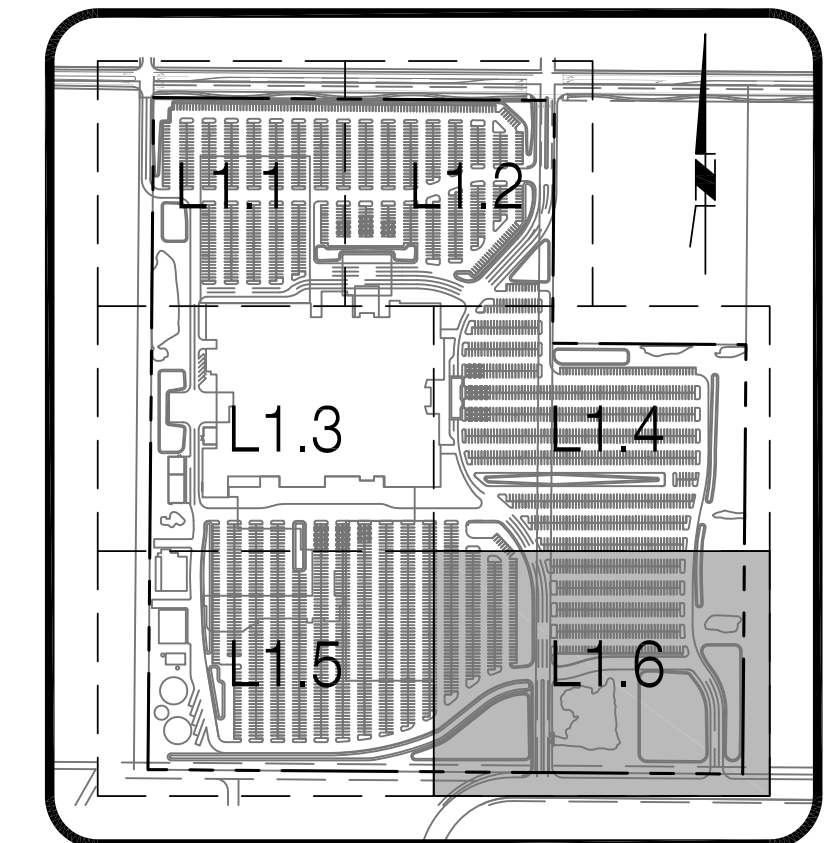
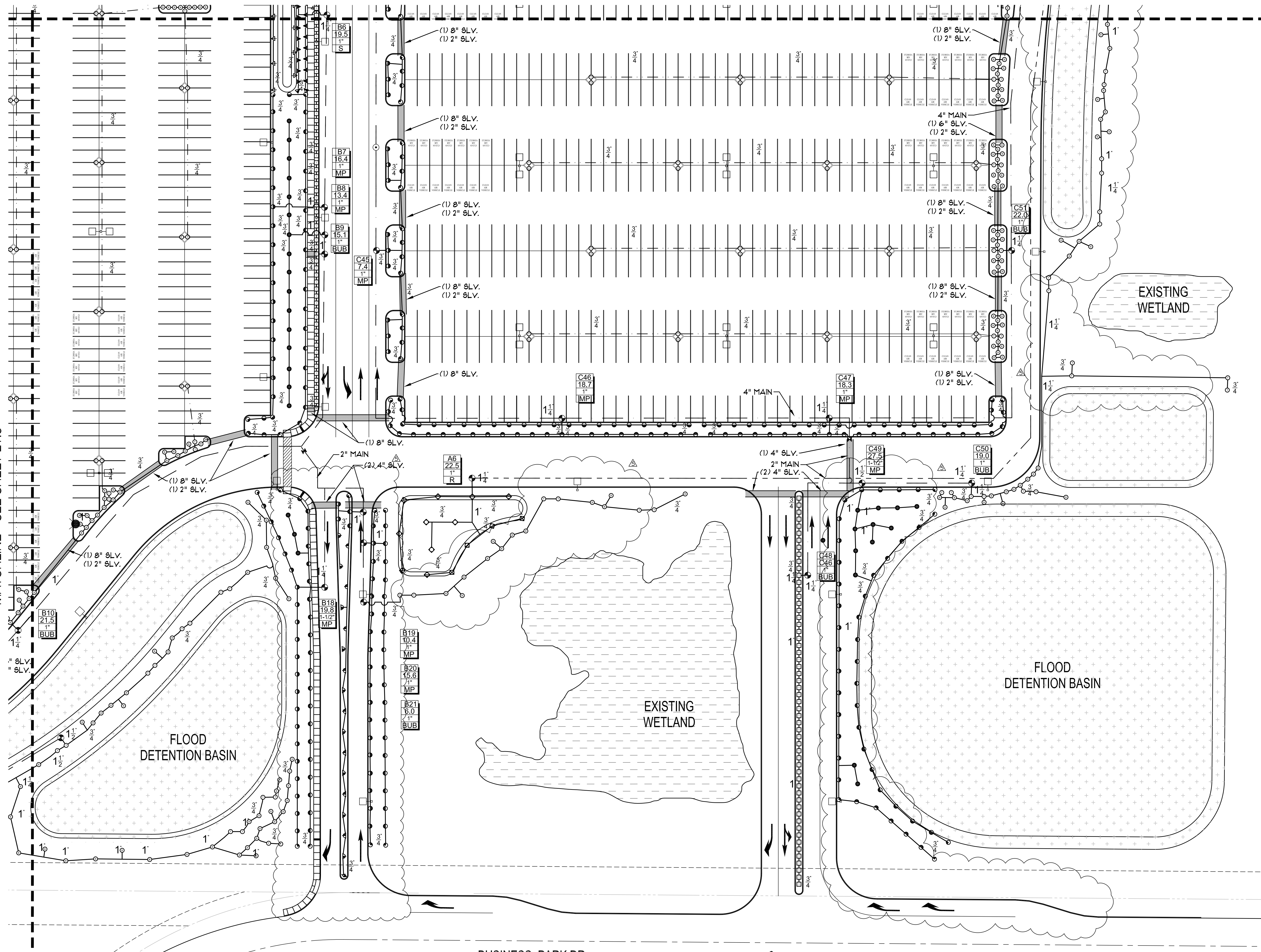
KGA ARCHITECTURE
 9075 West Diablo Drive, Third Floor
 Las Vegas, Nevada 89146
 702.367.8700
 www.kgaarchitecture.com
 AUSTIN

CONSULTANTS:
 DESIGN: FRIEMANLITNER GROUP
 ARCHITECTURE: HATCH DESIGN GROUP
 ELECTRICAL: RFP CONSULTING
 MECH. PLUMB. SECT. LOW VOLT. & L.S. ENGINEERS: JOHN A. MARTIN & ASSOCIATES
 LANDSCAPE ARCHITECTURE: JBA CONSULTING ENGINEERS
 LIGHTING: FURMAN LEAMY LAND GROUP
 EXTERIOR PAVERS: BJA CONSULTING WEST
 ADA REVIEW DESIGN: ENDELMAN & ASSOCIATES
 FOOD SERVICE DESIGN: CULINARY DESIGN & FIXTURE INC.
 PHOTOGRAPHY: SASC SOUTHWEST

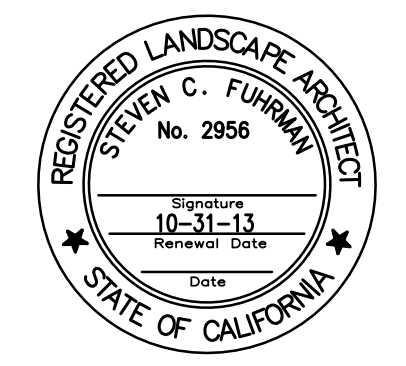
PROJECT:
 SITE AND UNDERGROUND PACKAGE
 SHEET CONTENTS:
 LANDSCAPE IRRIGATION PLAN
 DATE: MAY 14, 2012
 JOB NO.: TI-908
 SHEET: L1.5

MATCHLINE - SEE SHEET L1.4

MATCHLINE - SEE SHEET L1.5



KEY MAP



REVISIONS:

- LANDSCAPE REVISIONS
- GENERAL REVISIONS

ROBERT PARK, CALIFORNIA
 FEDERATED INDIANS OF GRATON RANCHERIA
 GRATON RANCHERIA CASINO BUILD-OUT

KGA ARCHITECTURE
 9075 West Diablo Drive, Third Floor 1701 Directors Boulevard, Suite 770
 Las Vegas, Nevada 89148 Austin, Texas 78744
 702.307.7900 312.441.0200
 www.kgaarchitects.com AUSTIN LAS VEGAS

- CONSULTANTS:
- DESIGN: FRIEDMATTER GROUP, TELEPHONE: 702-738-7407
 - DESIGN: HATCH DESIGN GROUP, TELEPHONE: 714-974-8385
 - CIVIL ENGINEER: RSE CONSULTING, TELEPHONE: 702-964-0880
 - STRUCTURAL ENGINEER: JOHN A. MARTIN & ASSOCIATES, TELEPHONE: 702-964-7888
 - Mech. PLUMB. ELEC. LOW VOLT. & L.S. ENGINEER: JBA CONSULTING ENGINEERS, TELEPHONE: 702-352-8550
 - LANDSCAPE ARCHITECT: FURRERMAN LEAMY LAND GROUP, TELEPHONE: 951-219-0343
 - LIGHTING: ILLUMINATING CONCEPTS, TELEPHONE: 360-497-0222
 - OUTDOOR SWIMLAPS: BJA CONSULTING WEST, TELEPHONE: 702-794-4422
 - ADA REVIEW DESIGN: ENDELMAN & ASSOCIATES, TELEPHONE: 302-334-4442
 - FOOD SERVICE DESIGN: CULINARY DESIGN & FIXTURE INC., TELEPHONE: 702-696-1855
 - PROFESSIONAL: SASC SOUTHWEST, TELEPHONE: 405-970-0088

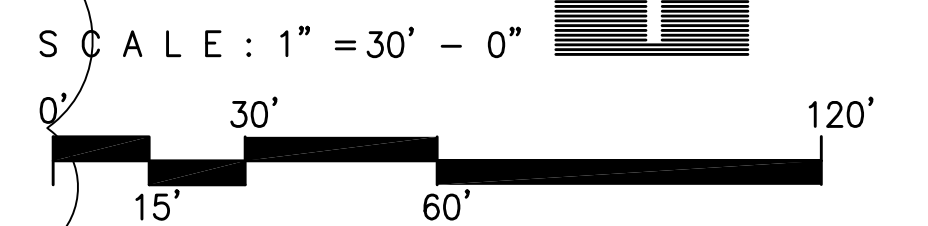
PROJECT: SITE AND UNDERGROUND PACKAGE

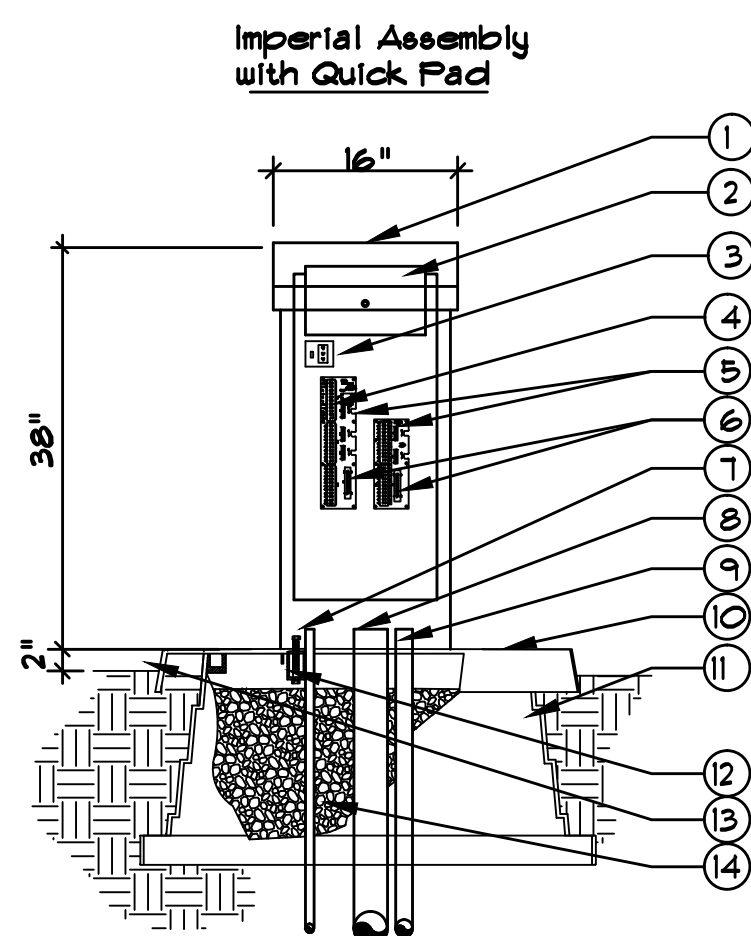
SHEET CONTENTS: LANDSCAPE IRRIGATION PLAN

DATE: MAY 14, 2012
JOB NO: TI-908

SHEET: L1.6

NOTES:
 PLAN IS DIAGRAMMATIC.
 LOCATE IRRIGATION MAIN,
 VALVES & GCVS IN PLANTING
 AREA ALONG BACK OF WALK
 OR CURB, TYP.



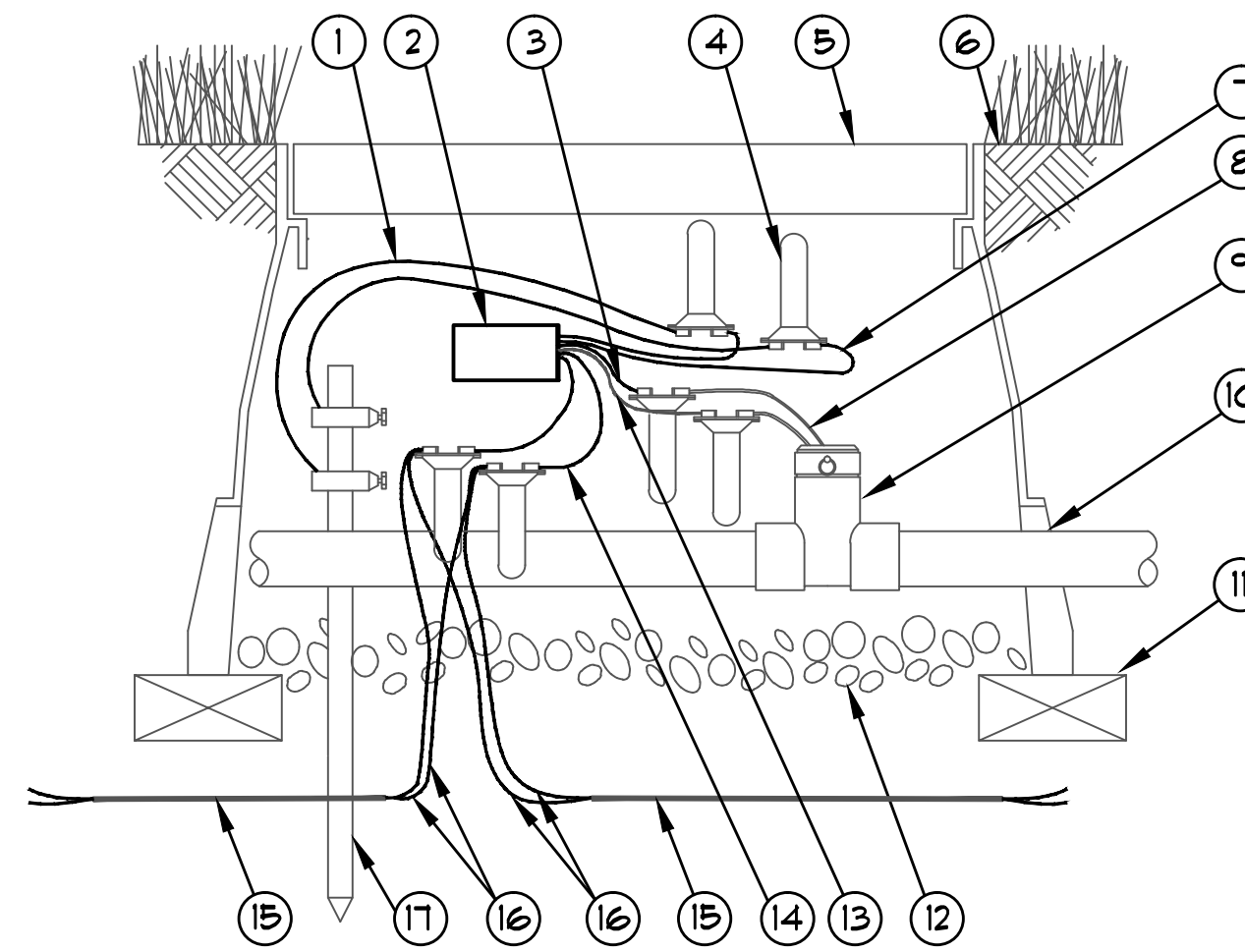


* Note all grounding requirements for controller assemblies shall conform to local electrical codes.

LEGEND:

1. IMPERIAL ASSEMBLIES 16" TOP ENTRY CONTROLLER ASSEMBLY NEMA 3R RAINPROOF ENCLOSURE (UL LISTED)
2. CONTROLLER
3. POWER SWITCH/GFI RECEPTACLE
4. MASTER VALVE RELAY ASSEMBLY OR PUMP START RELAY ASSEMBLY (OPTIONAL)
5. TERMINAL BOARD
6. REMOTE ACCESS CONNECTOR (OPTIONAL)
7. 1" PVC CONDUIT FOR 120 VAC FROM METERED POWER SUPPLY
8. PVC CONDUIT FOR CONTROL WIRES, SIZE AS REQUIRED
9. 1" PVC CONDUIT FOR FLOW SENSOR CABLE PAIGE CABLE P - 1162 - D (IF APPLICABLE)
10. MOUNTING PAD ALUMINUM POWERCOATED PERFORMED PAD 20" X 30"
11. MOUNTING PAD BASE
12. MOUNTING PAD MOUNTING BRACE
13. FINISH GRADE 2" BELOW TOP OF MOUNTING PAD
14. FILL VOIDS WITH 3/8" PEA GRAVEL

A 16' x 16' Top Entry Controller Assembly (ICA6 Series)
SCALE: N.T.S.

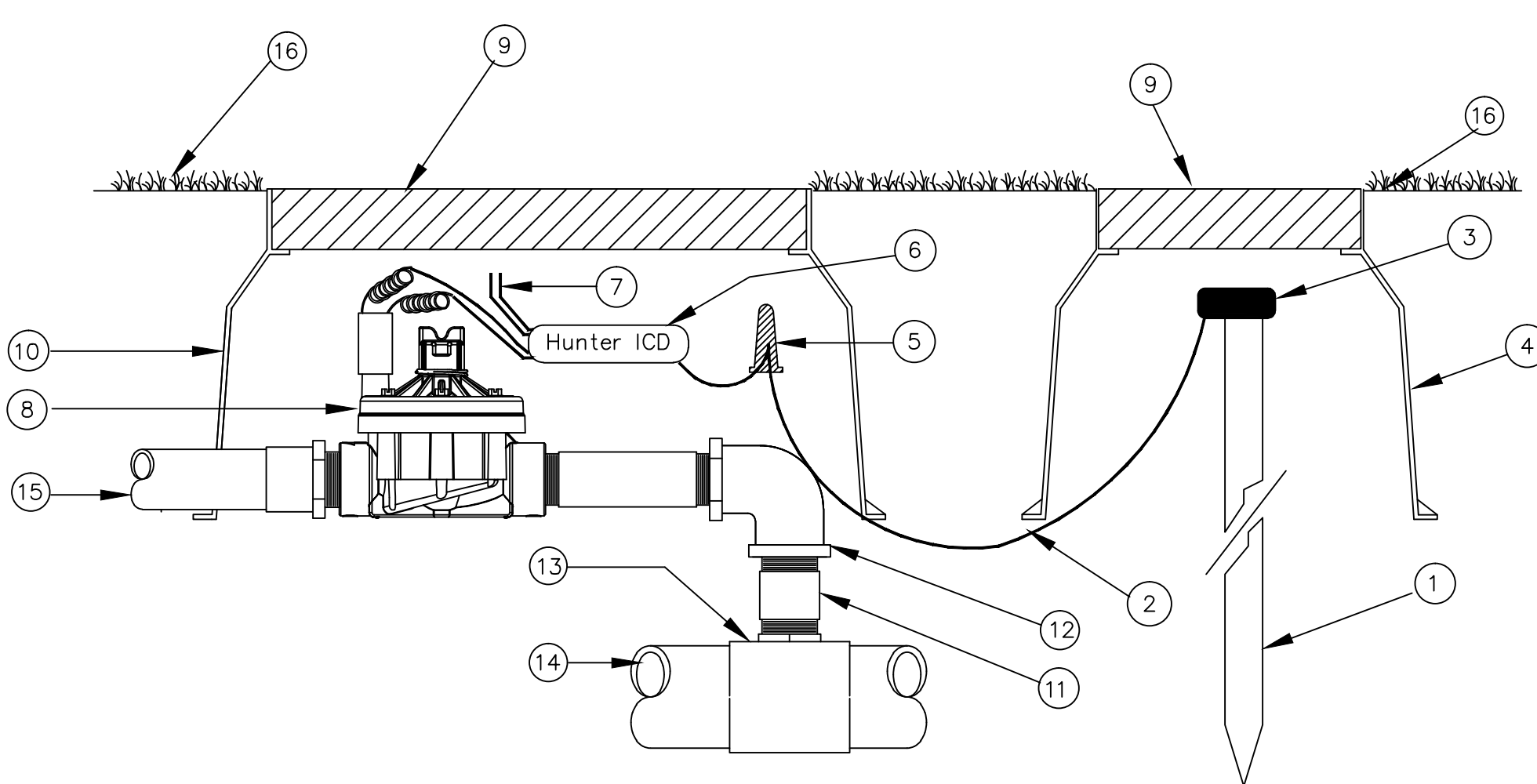


NOTES:

1. SECONDARY WIRE RUN - DISTANCE BETWEEN SENSOR DECODER AND FLOW METER - NOT TO EXCEED 250 FEET WITH 14 GAUGE WIRE.
2. PLACE 3 FEET OF EXTRA WIRE IN A VALVE BOX FOR EASY SERVICING.
3. IN A SITE CONTROL DECODER SYSTEM A PULSE TRANSMITTER (FT322) SHOULD BE INSTALLED BETWEEN THE SENSOR DECODER AND THE FLOW SENSOR. A PULSE TRANSMITTER IS NOT NEEDED IN AN MDC SYSTEM.
4. GROUNDING SHOULD BE 10 OHMS OR LESS.

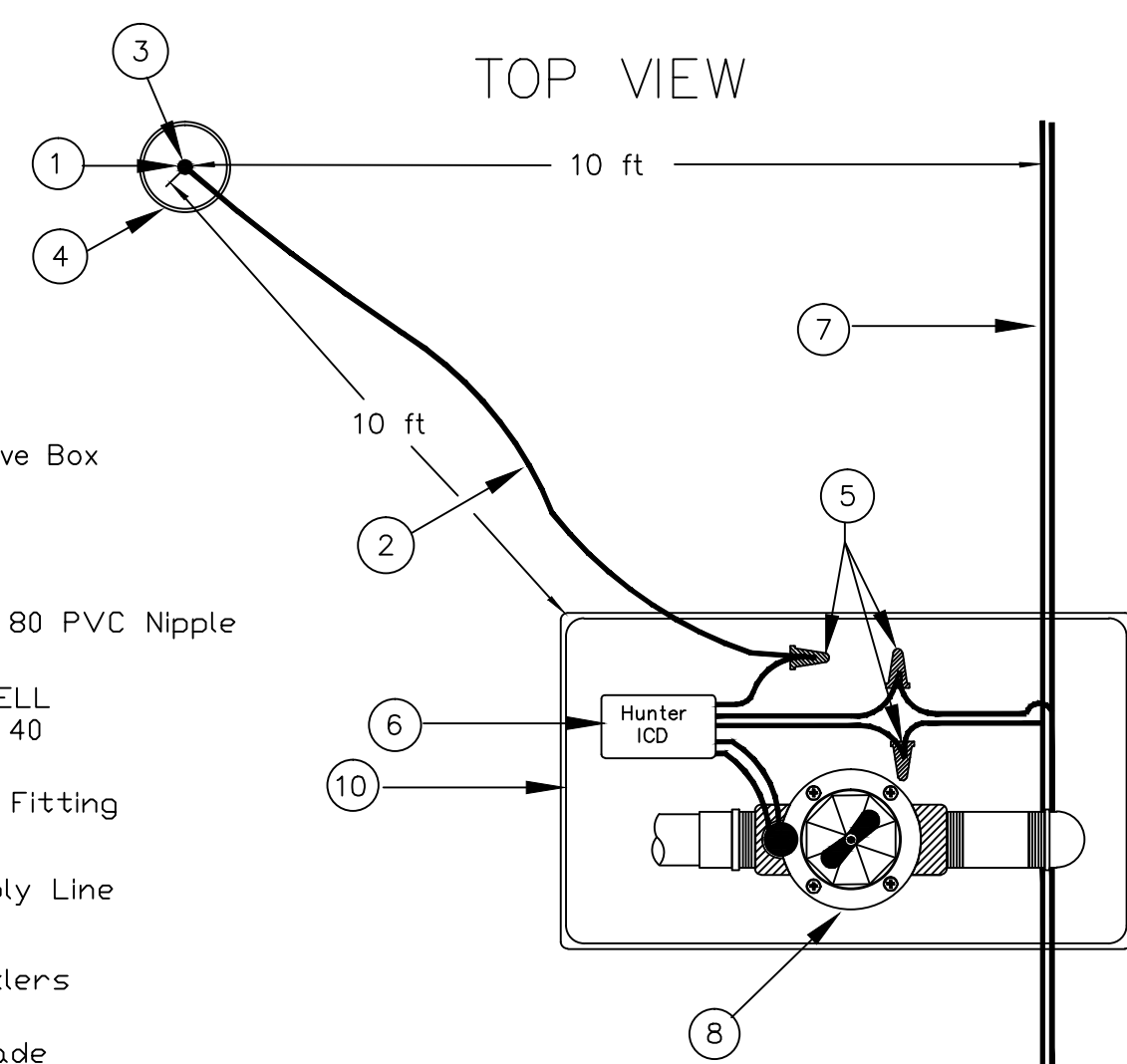
1. GREEN / YELLOW WIRE FROM 9D-210TURF DECODER TO GROUNDING ROD USING BRASS CLAMP (1 OF 2)
2. 9D-210TURF M13009 DECODER
3. RED WIRE FROM DECODER TO FLOW SENSOR
4. DBY WATER PROOF CONNECTION (1 OF 6)
5. VALVE BOX WITH COVER: 12-INCH SIZE
6. FINISH GRADE / TOP OF MULCH
7. GROUND WIRE OF 9D-210TURF TO DBY CONNECTOR (1 OF 2)
8. FLOW SENSOR WIRE (1 OF 2)
9. FLOW SENSOR
10. PVC MAINLINE PIPE
11. BRICK (1 OF 4)
12. 3.0 - INCH MIN. DEPTH OF 3/4 - INCH WASHED GRAVEL
13. BLACK WIRE FROM DECODER TO FLOW SENSOR
14. BLUE WIRE FROM 9D-210TURF DECODER (1 OF 2)
15. TWO-WIRE CABLE TO NEXT DEVICE (FIELD DECODER, SENSOR DECODER, OR MDC)
16. COMMUNICATION WIRE TO NEXT DEVICE (FIELD DECODER, SENSOR DECODER, OR MDC)
17. GROUNDING ROD

B FLOW SENSOR AND SENSOR DECODER
SCALE: N.T.S.

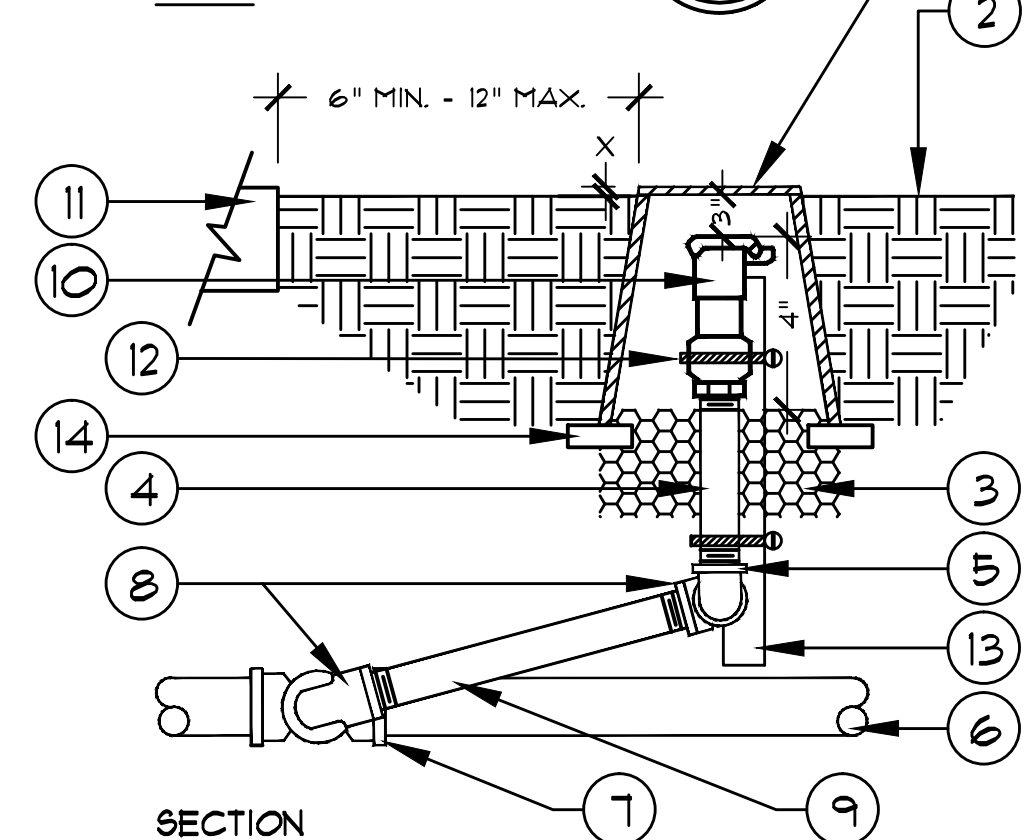


1. 8' x 5/8" UL Copper Clad Ground Rod
2. 10' #6 Solid Copper Ground Wire
3. Cad Weld Connector
4. 10" Round Plastic Valve Box
5. DBR-6 Connector
6. Hunter ICD-100
7. ACC 2 Wire Path
8. ICV
9. Plastic Valve Box With Cover
10. ICV Valve Box
11. Schedule 80 PVC Nipple
12. 90° PVC ELL Schedule 40
13. Main Line Fitting
14. Main Supply Line
15. To Sprinklers
16. Finish Grade

C ICD - DECODER WITH GROUNDING ROD
SCALE: N.T.S.



PLAN



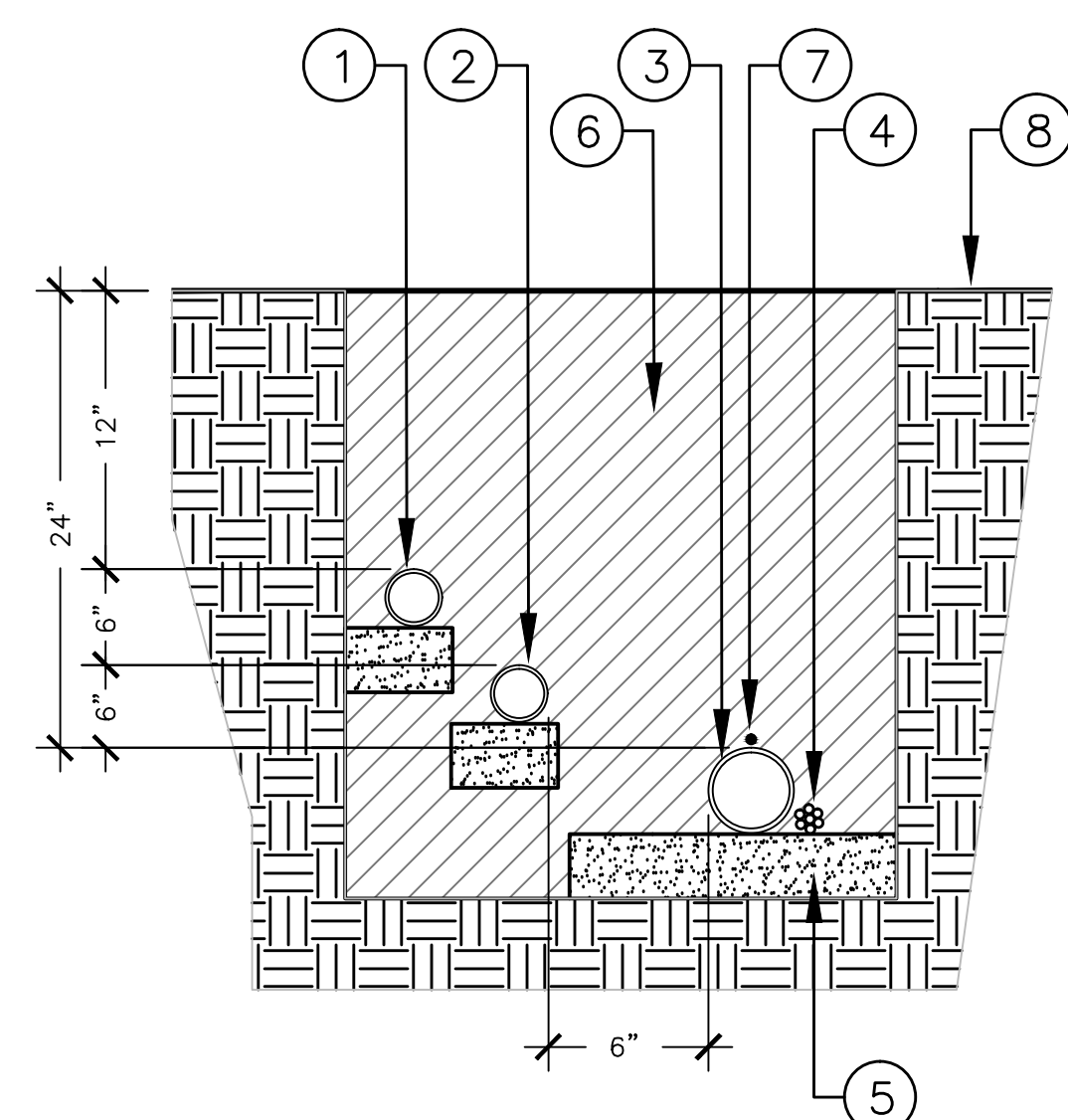
NOTES:

1. USE TEFLON TAPE ON ALL MALE PIPE THREADS.
- X - 1 1/2" ABOVE FINISH GRADE IN LAWN AREAS
- 2 1/2" ABOVE FINISH GRADE IN SHRUB AREAS.

D QUICK COUPLER (RECYCLED)
SCALE: N.T.S.

LEGEND:

1. 10" ROUND PURPLE VALVE BOX, HEAT BRAND "QCV" ON LID IN 2" HIGH CHARACTERS.
2. FINISH GRADE.
3. 3/4" CRUSHED ROCK 6" DEPTH.
4. PURPLE SCH 80 NIPPLE, LENGTH AS REQUIRED.
5. PURPLE SCH 40 90° ELL.
6. PURPLE MAINLINE PIPING.
7. PURPLE MAINLINE FITTING.
8. PURPLE SCH 40 90° STREET ELL.
9. PURPLE SCH 80 NIPPLE, 6" LONG.
10. QUICK COUPLING VALVE.
11. ADJACENT CONCRETE.
12. STAINLESS STEEL CLAMPS.
13. 1" X 3/16" X 30" ANGLE IRON.
14. COMMON BRICK (2 REQUIRED).



LEGEND:

1. NON-PRESSURE PURPLE PVC LATERAL LINE PIPING, FOR 6" LAWN SPRAY POP-UPS.
2. NON-PRESSURE PURPLE PVC LATERAL LINE PIPING FOR 12" SHRUB SPRAY POP-UPS.
3. PURPLE PVC PRESSURE MAINLINE PIPING.
4. CONTROL WIRES - TAPE AND BUNDLE EVERY 10 FEET. INSTALL ADJACENT TO PRESSURE MAIN LINE.
5. PROVIDE 2" DEPTH OF CLEAN BACKFILL.
6. SEE IRRIGATION SPECS FOR BACKFILL AND COMPACTION REQUIREMENTS.
7. #10 BARE COPPER TRACE WIRE.
8. FINISH GRADE.

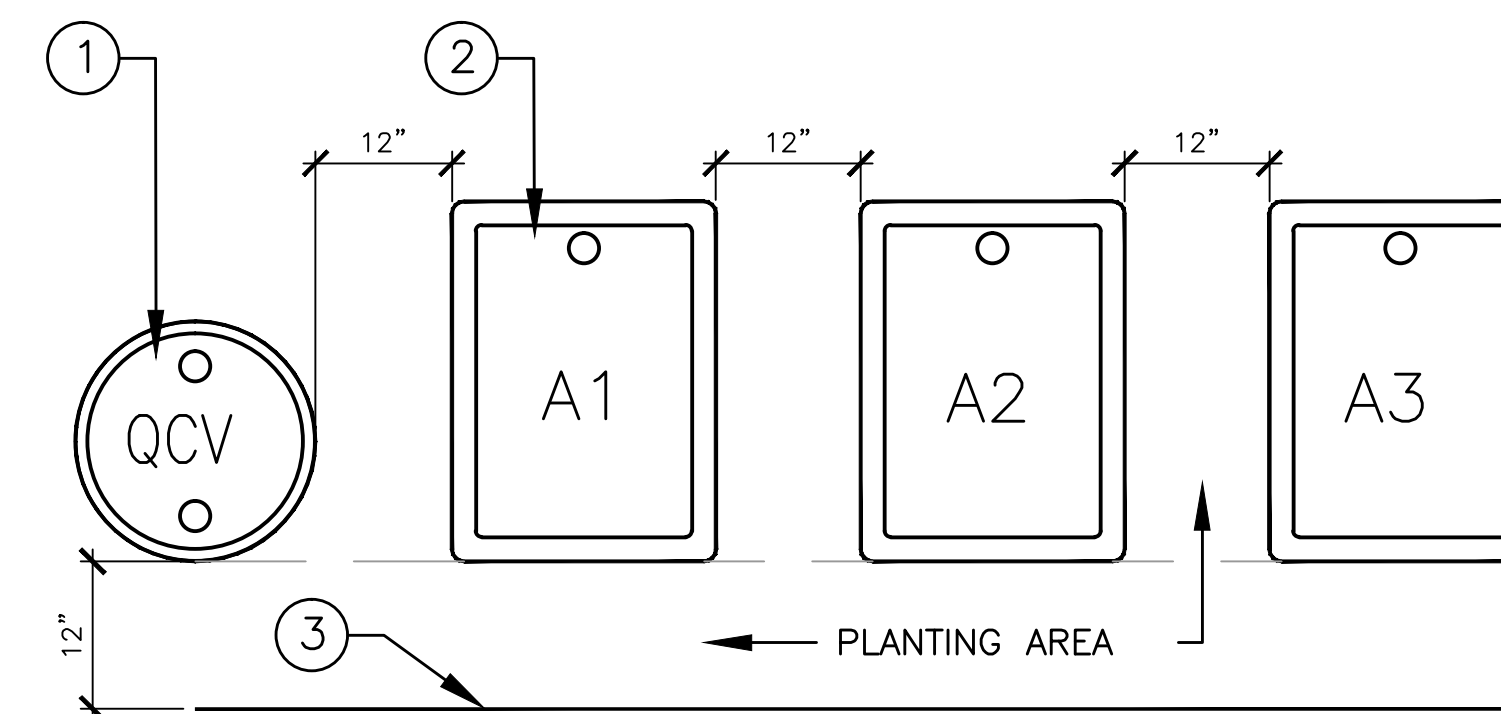
E IRRIGATION TRENCHING: 24" DEPTH (RECYCLED)
SCALE: N.T.S.

TYPE OF FTG.	90° BEND	45° BEND	22-1/2° BEND	TEE/END	TEE W/PLUG	CROSS	CROSS W/PLUG
TYPICAL INSTALLATION							
SIZE OF PIPE	2 1/2"	1	.5	.5	1	1	1
	3"	1	.5	.5	1	1	1
	4"	2	1	1	2	2	2
	6"	3	2	1	3	3	3
	8"	6	3	1	4	6	6
	10"	9	5	2	7	9	9
	12"	12	9	4	9	12	12

LEGEND:

1. PROVIDE THRUST BLOCKS AT ALL CHANGES IN SIZE OR DIRECTIONS, BENDS, REDUCERS, PLUGS, AND THE OPPOSITE SIDE OF TEE BRANCHES ALL REQUIRE THRUST BLOCKS.
2. THRUST BLOCKS ARE TO BE CONSTRUCTED OF CLASS 'B' CONCRETE.
3. AREAS GIVEN ARE FOR CLASS 200 PVC AT 120 PSI PER SOIL BEARING CAPACITY CHART. INSTALLATIONS USING DIFFERENT PIPE, PRESSURES, AND/OR SOIL TYPES SHOULD BE ADJUSTED ACCORDINGLY.
4. THRUST BLOCKS ARE TO BE PLACED AGAINST UNDISTURBED SOIL.
5. THE SIZE OF THE THRUST BLOCK IS DETERMINED BY THE WORKING PRESSURE, THE SIZE AND TYPE OF FITTING, AND THE SOIL CONDITIONS. TO DETERMINE REQUIRED BEARING AREA IN TOTAL SQUARE FEET REFER TO THE CHART ABOVE BY PIPE SIZE. AREAS GIVEN ARE FOR CL 200 PVC AT 150 PSI WITH A SOIL BEARING PRESSURE OF 2,000 PSF.

F THRUST BLOCKING FOR RING-TITE PIPE
SCALE: N.T.S.



LEGEND:

1. 10" ROUND PURPLE VALVE BOX, HEAT BRAND "QCV" ON LID IN 2" HIGH CHARACTERS.
2. RECTANGULAR PURPLE VALVE BOX W/BOLT DOWN COVER, HEAT BRAND VALVE STATION NO. ON LID IN 2" HIGH CHARACTERS.
3. EDGE OF LAWN, WALK, FENCE, CURB, ETC.
1. CENTER BOXES OVER VALVES.
2. PLACE BOXES IN GROUNDCOVER AREA WHERE POSSIBLE. TYPICAL.
3. PLACE BOXES PARALLEL TO EACH OTHER AND PERPENDICULAR TO EDGE OF HARDSCAPE.
4. VALVE BOX SHALL BE PURPLE (PANTONE 512) FOR RECLAIMED WATER.

G VALVE BOX LAYOUT (RECYCLED)
SCALE: 1-1/2" = 1' - 0"



REVISIONS

- LANDSCAPE REVISIONS JULY 25, 2008
- GENERAL REVISIONS AUGUST 14, 2008

CALIFORNIA

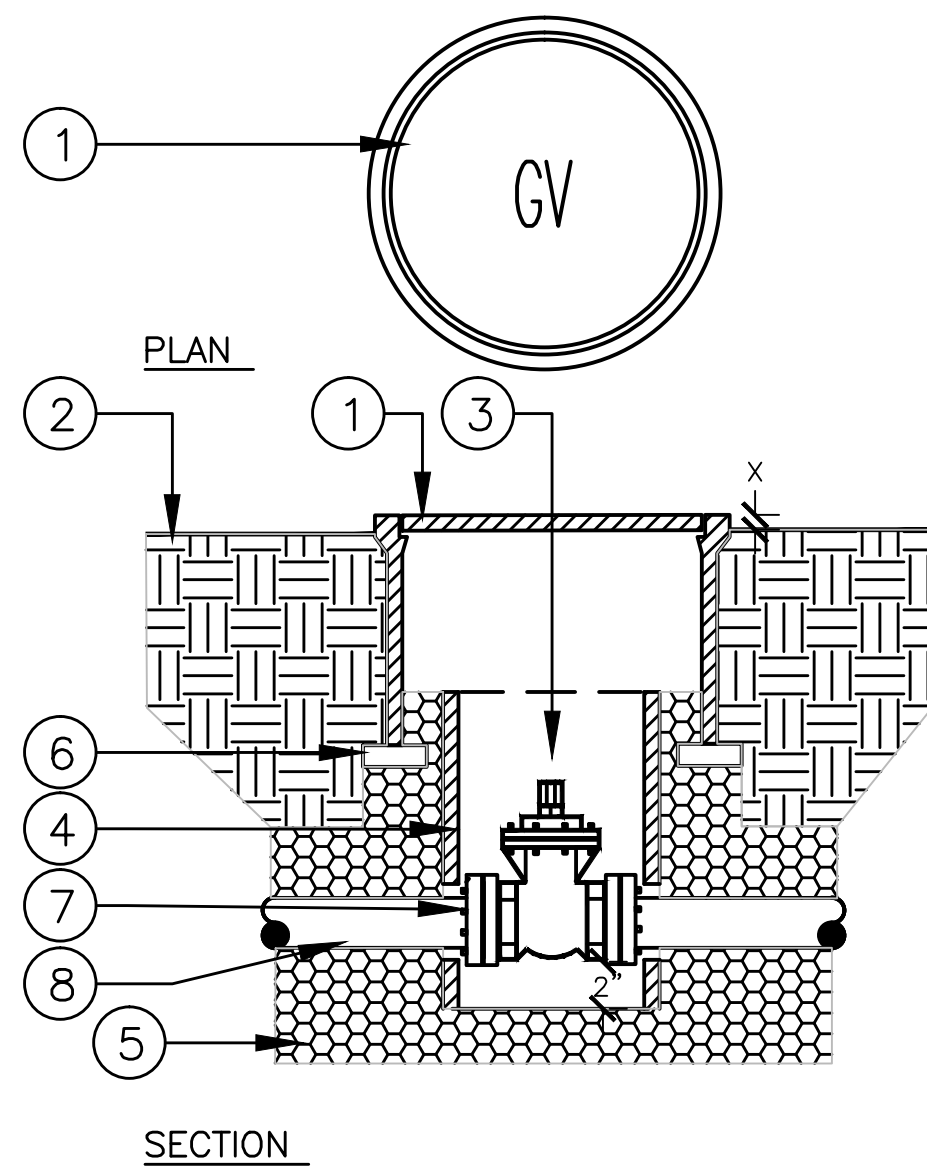
FEDERATED INDIANS OF GRATON RANCHERIA
GRATON RANCHERIA CASINO
BUILD-OUT

ROHNETT PARK, AUSTIN

KGA ARCHITECTURE
9075 West Diablo Drive, Third Floor, Las Vegas, Nevada 89148
1701 Directors Boulevard, Suite 770 Austin, Texas 78744
702.387.8700 512.441.0200
www.kgaarchitecture.com

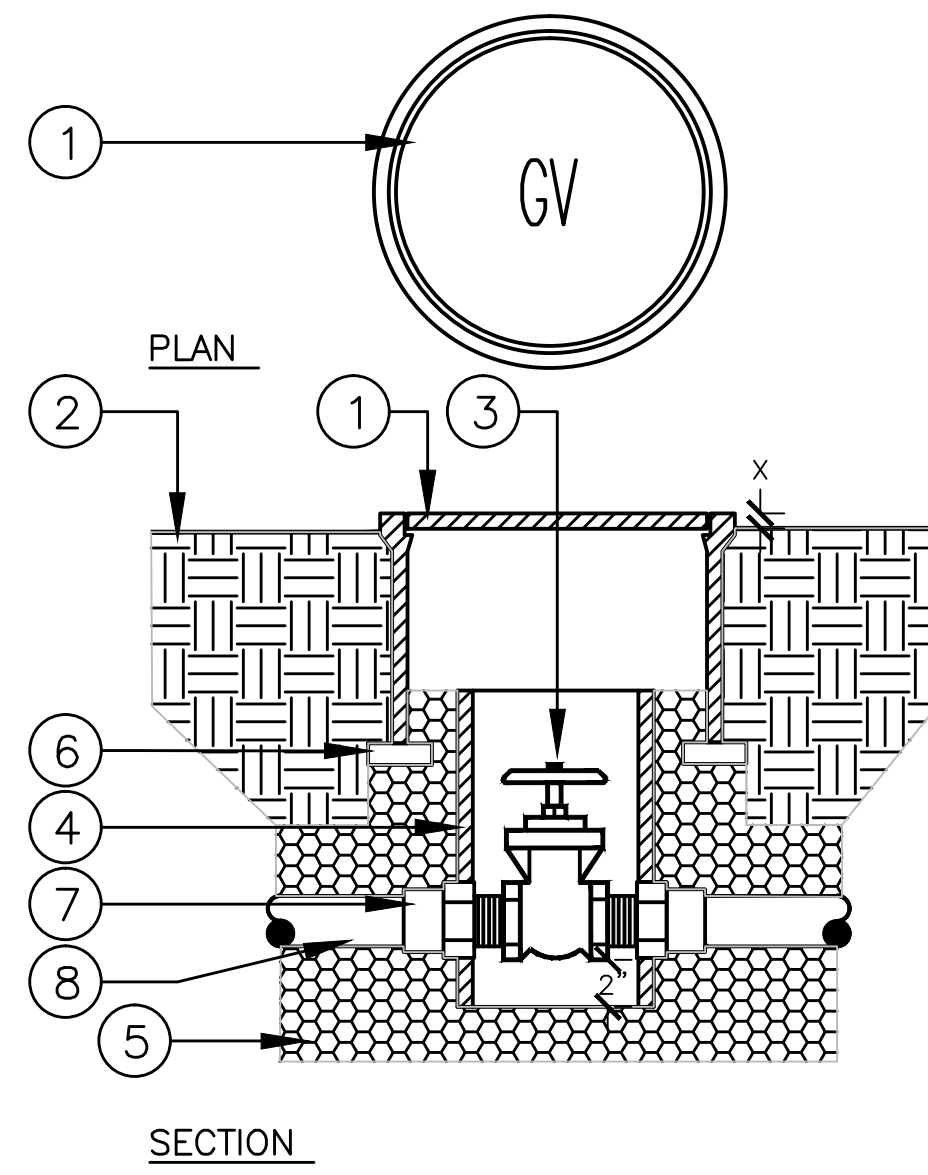
CONSULTANTS:
DESIGN: FRIEDMUTTER GROUP
HATCH DESIGN GROUP
PILE CONSULTING
CIVIL ENGINEER: JOHN A. MARTIN & ASSOCIATES
MECH. PLUMB. ELEC. LOW VOLT. & L.S. ENGINEER: JBA CONSULTING ENGINEERS
LANDSCAPE ARCHITECT: FURMAN LEAMY LAND GROUP
LIGHTING: ILLUMINATING CONCEPTS
EXTERIOR PAINTS: BJA CONSULTING WEST
ADA REVIEW DESIGN: ENDELMAN & ASSOCIATES
FOOD SERVICE DESIGN: CULINARY DESIGN & FIXTURE INC.
PROFESSION: SASC SOUTHWEST

PROJECT: SITE AND UNDERGROUND PACKAGE
SHEET CONTENTS: LANDSCAPE IRRIGATION DETAILS
DATE: MAY 14, 2012
JOB NO.: TI-908
SHEET:



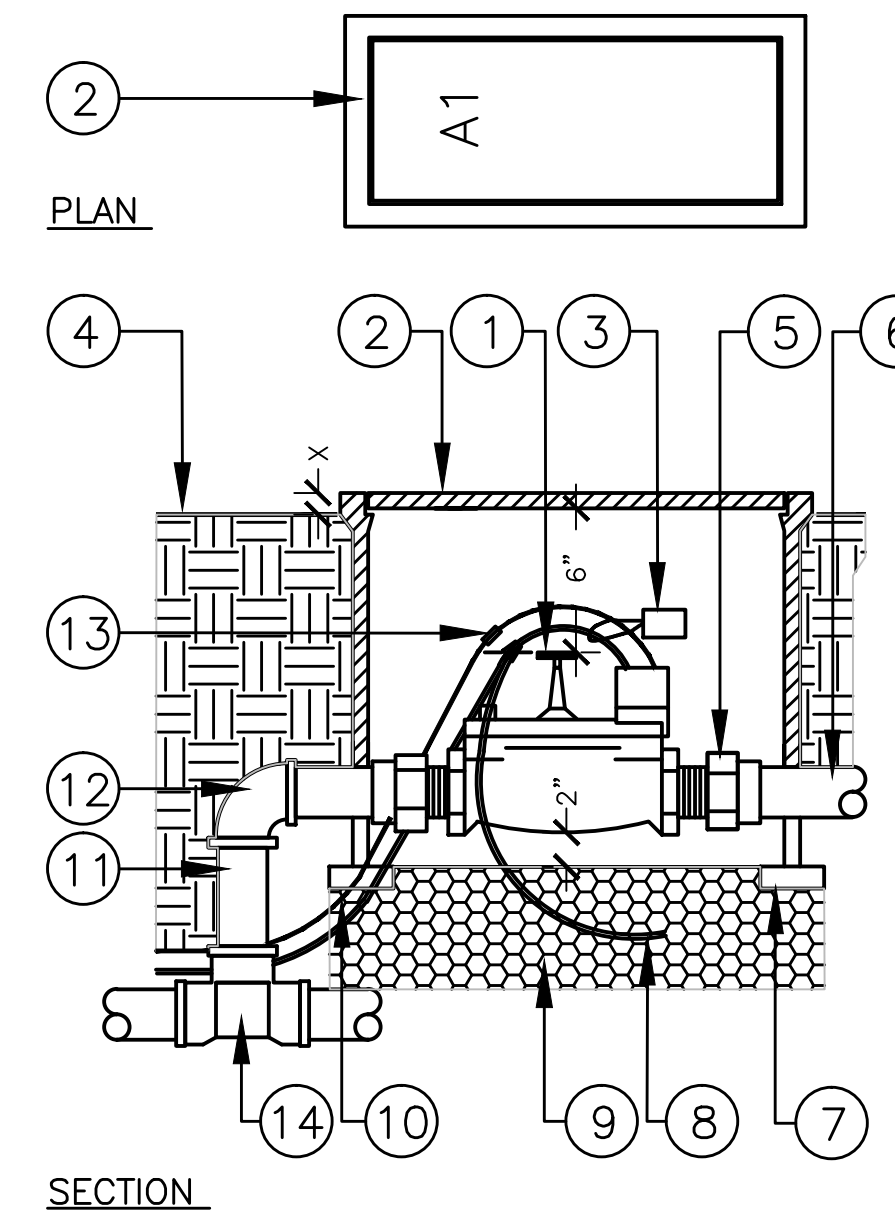
- LEGEND:**
1. ROUND VALVE BOX WITH PURPLE BOLT-DOWN COVER. HEAT BRAND "GV" ON VALVE BOX COVER IN 2" HIGH LETTERS.
 2. FINISH GRADE.
 3. GATE VALVE WITH FLANGE END PLATES AND 2" OPERATING NUT.
 4. SCH. 40 PVC PIPE EXTENSION. LENGTH AS REQUIRED.
 5. 3/4" CRUSHED ROCK. 8" DEPTH.
 6. COMMON BRICK (2 REQUIRED).
 7. FLANGE END PLATES.
 8. PVC MAIN LINE PIPE.
- NOTE:**
 X - 1" IN TURF AREAS
 2" IN SHRUB AREAS

A GATE VALVE FLANGED
 SCALE: N.T.S.



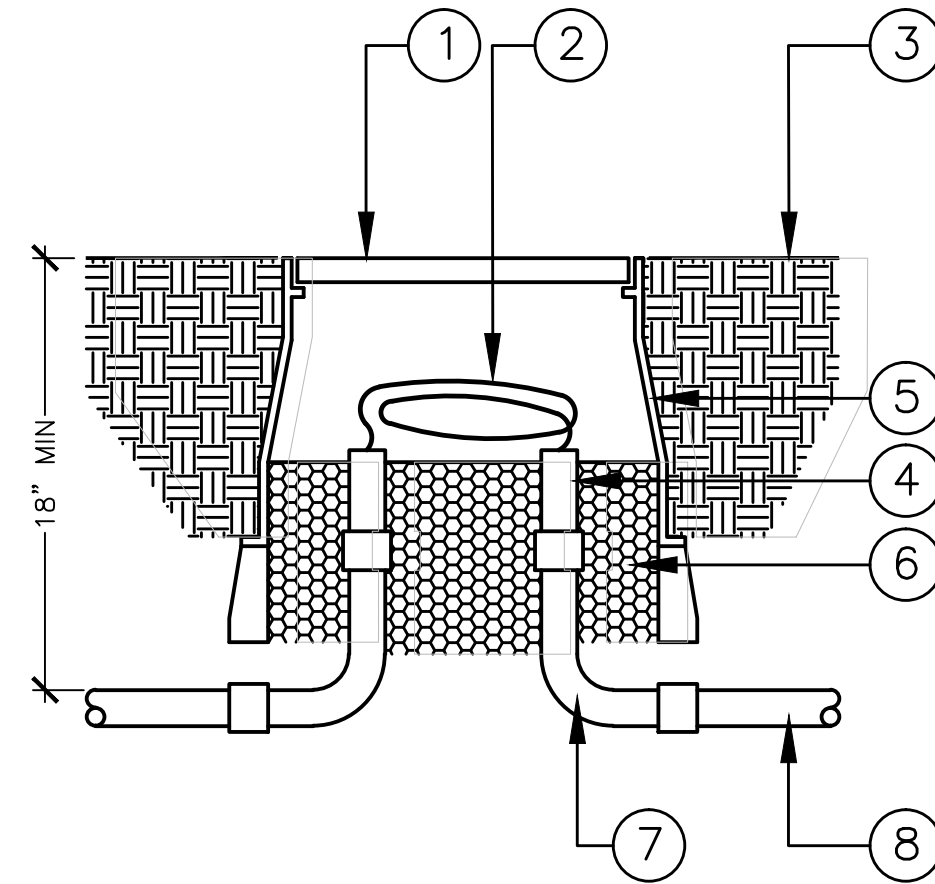
- LEGEND:**
1. ROUND PURPLE VALVE BOX WITH BOLT-DOWN COVER. HEAT BRAND "GV" ON VALVE BOX COVER IN 2" HIGH LETTERS.
 2. FINISH GRADE.
 3. GATE VALVE WITH BRONZE WHEEL HANDLE OR CROSS-HANDLE.
 4. 6" DIA. SCH. 40 PURPLE PVC PIPE EXTENSION. LENGTH AS REQUIRED.
 5. 3/4" CRUSHED ROCK. 8" DEPTH.
 6. COMMON BRICK (2 REQUIRED).
 7. PURPLE PVC MALE ADAPTER. TYPICAL.
 8. PURPLE PVC MAIN LINE PIPE.
- NOTE:**
 X - 1" IN TURF AREAS
 2" IN SHRUB AREAS

B GATE VALVE (RECYCLED)
 SCALE: N.T.S.



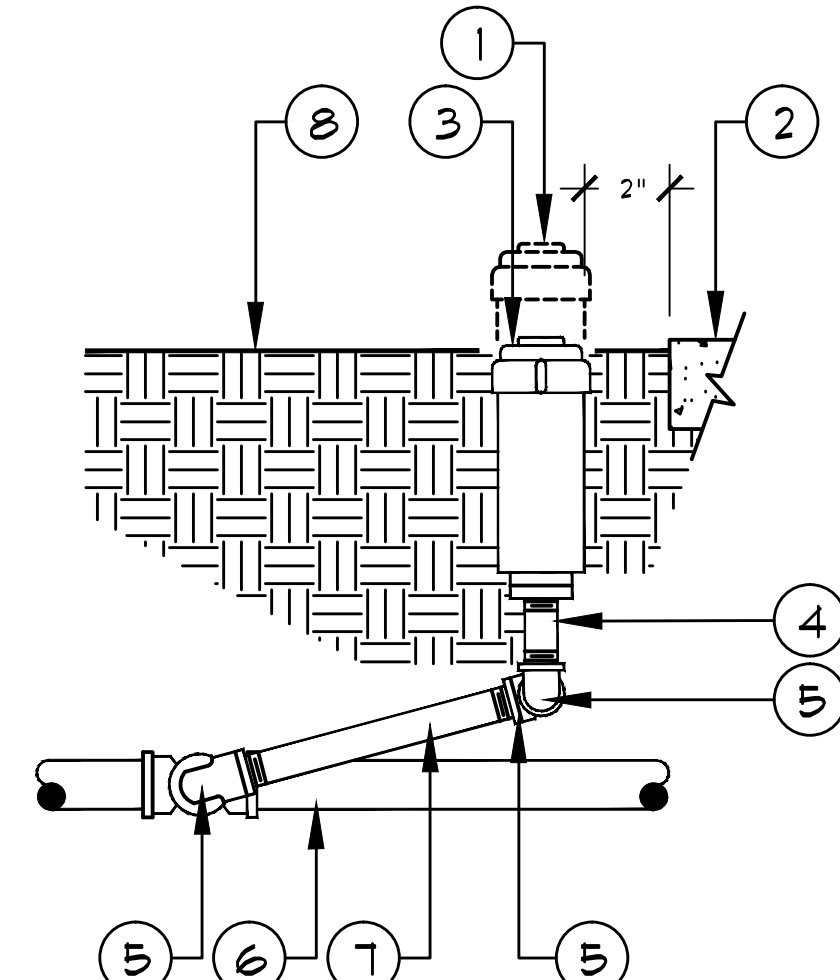
- LEGEND:**
1. ELECTRIC CONTROL VALVE WITH PURPLE HANDLE.
 2. RECTANGULAR VALVE BOX W/BOLT-DOWN PANATONE PURPLE COVER. HEAT BRAND VALVE STATION NO. ON LID IN 2" HIGH CHARACTERS.
 3. PURPLE CHRISTY I.D. TAG NUMBERED TO MATCH DRAWINGS.
 4. FINISH GRADE.
 5. PURPLE UNION FITTING.
 6. PURPLE PVC PIPE TO SPRINKLERS. ANGLE PIPE TO SPECIFIED DEPTH WITH 45° ELLS.
 7. COMMON BRICK (2 REQUIRED).
 8. COMMON WIRE TO OTHER VALVES ON SAME CONTROLLER.
 9. 3/4" CRUSHED ROCK. 8" DEPTH.
 10. CONTROL/Common WIRES FROM CONTROLLER.
 11. PURPLE PVC SCH. 80 NIPPLE.
 12. PURPLE PVC SxS 90° ELL.
 13. DBY BY 3M WIRE SPLICE KIT.
 14. PURPLE MAINLINE FITTING W/SOLVENT WELD OUTLET.
- NOTE:**
 X - 1" IN TURF AREAS
 2" IN TURF AREAS

C ELECTRIC REMOTE CONTROL VALVE (RECYCLED)
 SCALE: N.T.S.



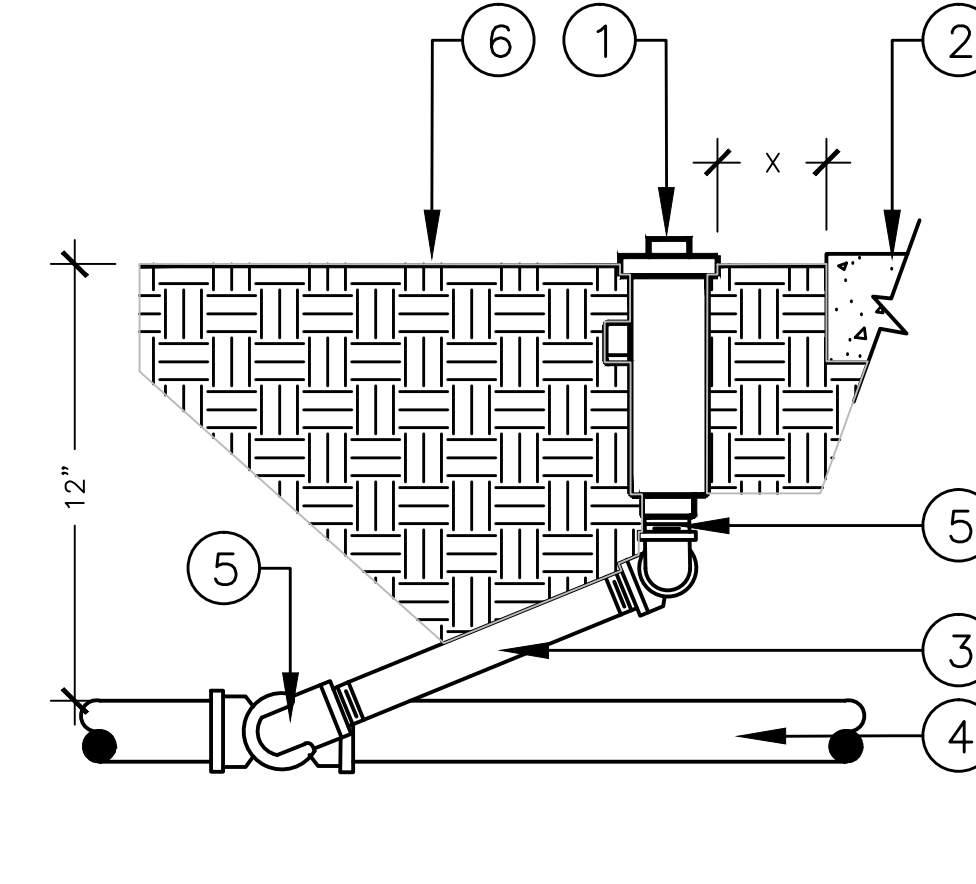
- LEGEND:**
1. VALVE BOX COVER.
 2. PE39 WIRE. 36" LOOP IN PULL BOX.
 3. FINISH GRADE.
 4. ENDS OF CONDUIT SEALED WITH WATERPROOF SILICONE.
 5. VALVE BOX. 14" RECTANGLE PLACED EVERY 200 LF MAXIMUM.
 6. 3/4" DRAIN ROCK. 4" DEPTH MIN. EXTEND 3" BEYOND PERIMETER OF BOX.
 7. 90° SWEEP ELL.
 8. 1 1/2" SCHEDULE 40 PIPE.

D PULL BOX
 SCALE: 1-1/2" = 1' - 0"



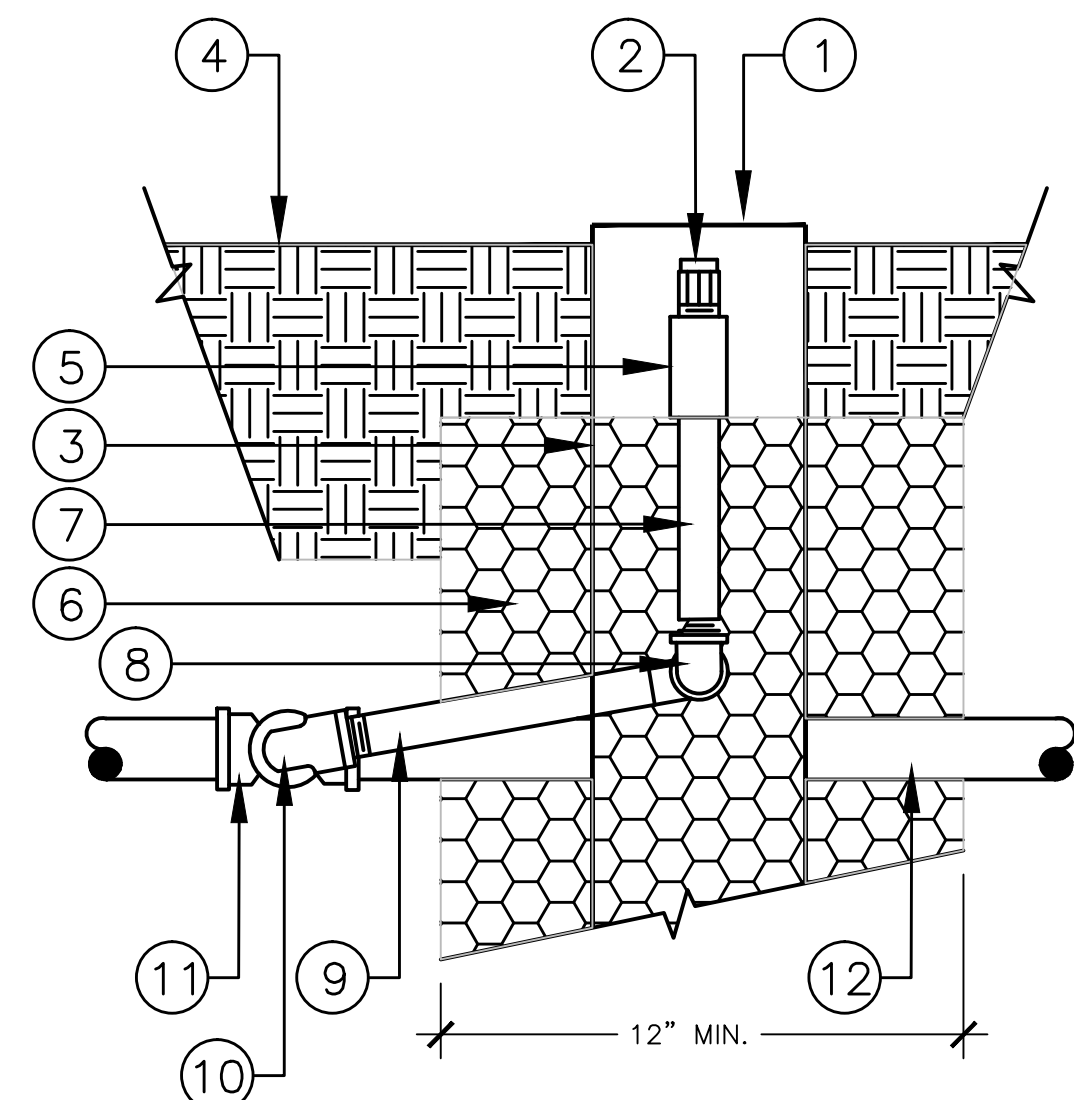
- LEGEND:**
1. SET ROTOR FLUSH WITH ADJACENT WALK OR CURB AND 3" ABOVE FINISH GRADE IN OPEN AREAS AT TIME OF INSTALLATION.
 2. ADJACENT WALK OR CURB.
 3. ROTOR HEAD WITH PURPLE CAP.
 4. PURPLE PVC SCH. 80 NIPPLE (2" MINIMUM LENGTH).
 5. PURPLE PVC T x T 90° ELL.
 6. PURPLE LATERAL LINE PIPE AND FITTINGS.
 7. PURPLE PVC SCH. 80 NIPPLE (8" LONG).
 8. FINISH GRADE.
- NOTES:**
 USE TEFLON TAPE ON ALL MALE PIPE THREADS.
 ADJUST SPRINKLER HEADS TO PROPER HEIGHT (1/4" ABOVE FINISH GRADE) PRIOR TO END OF MAINTENANCE PERIOD.

E POP-UP SPRINKLER: ROTOR (RECYCLED - GEAR DRIVE)
 SCALE: N.T.S.



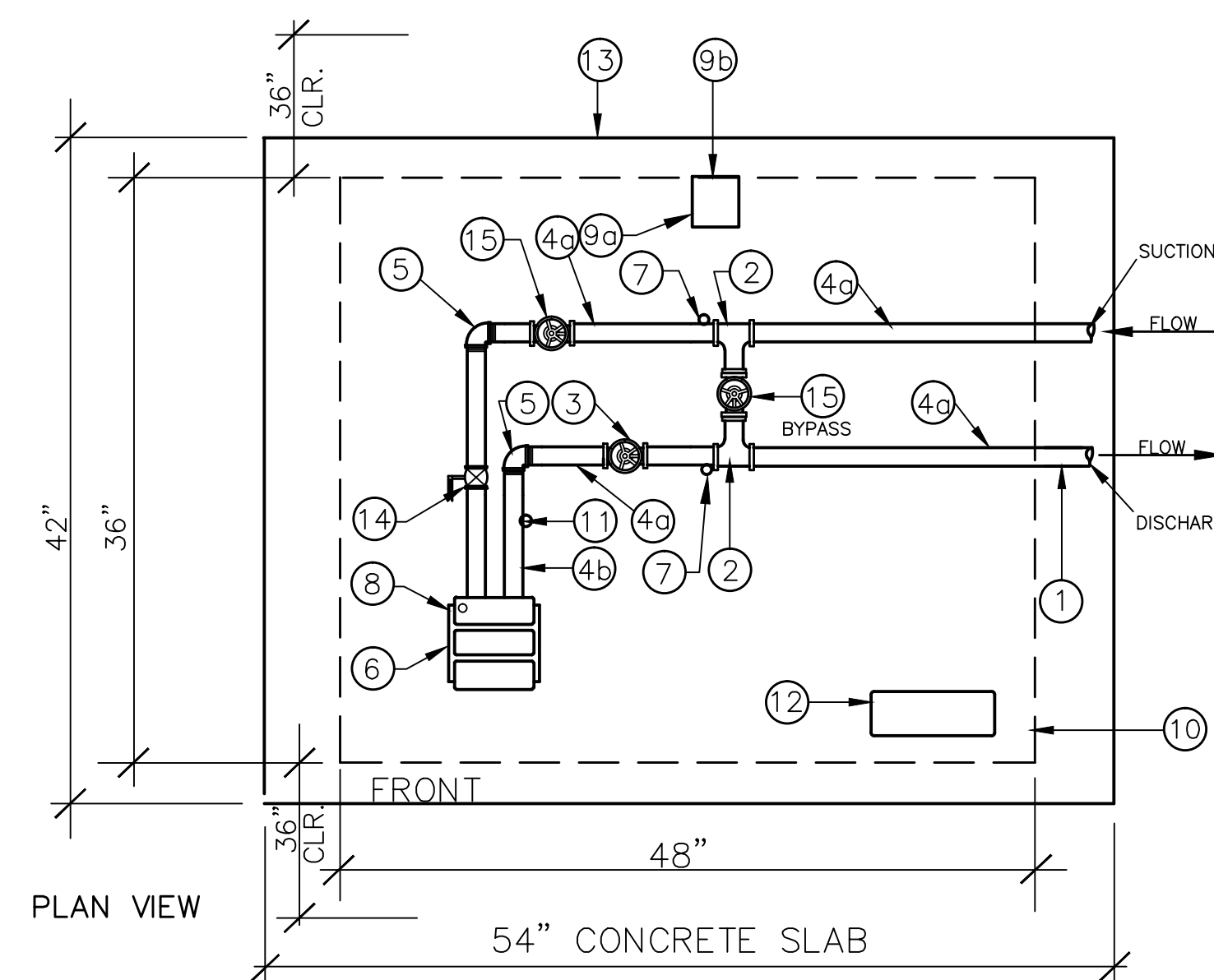
- LEGEND:**
1. POP-UP SPRAY HEAD WITH PURPLE CAP.
 2. ADJACENT WALK OR CURB.
 3. PURPLE PVC SCH. 80 NIPPLE (6" LONG).
 4. PURPLE LATERAL LINE PIPE AND FITTING.
 5. PURPLE PVC SCH. 80 NIPPLE (4" MIN. LENGTH).
 6. FINISH GRADE.
- NOTES:**
 USE TEFLON TAPE ON ALL MALE PIPE THREADS.
 X - 1" IN TURF AREAS.
 3" IN PLANTING BEDS.

F POP-UP SPRINKLER: KBI SWING JOINT (RECYCLED)
 SCALE: N.T.S.

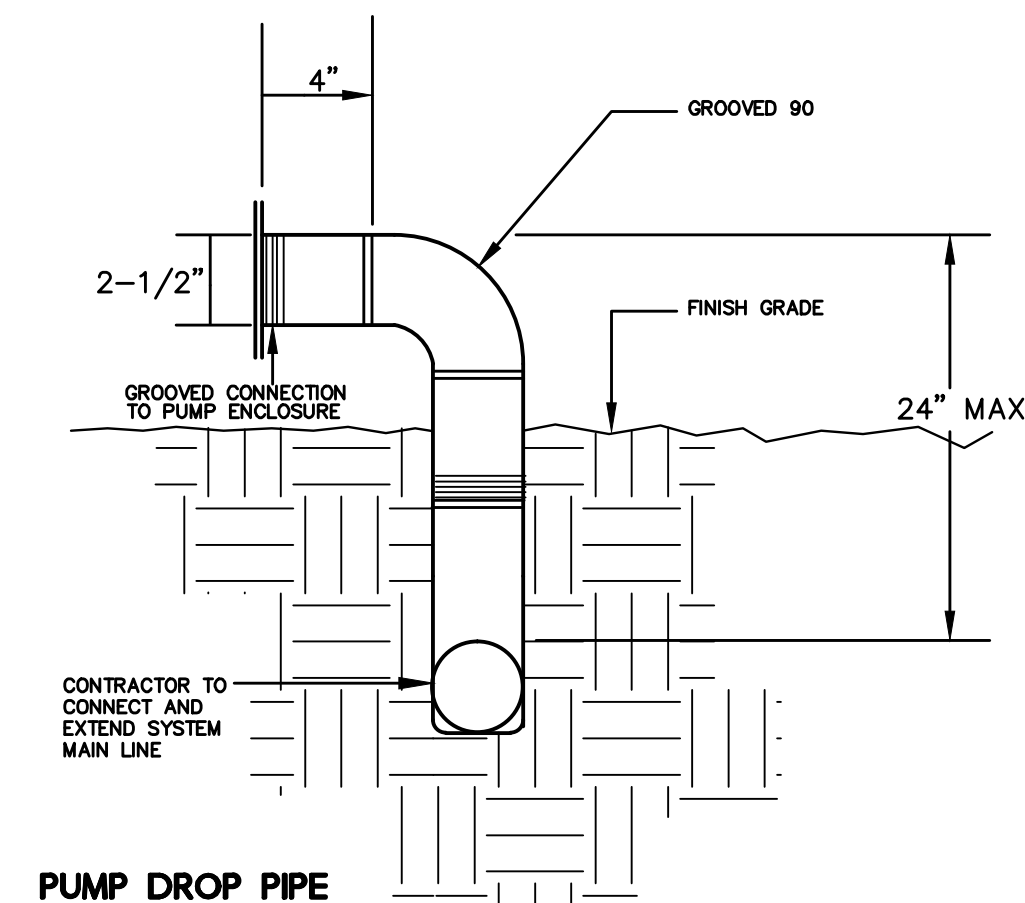


- LEGEND:**
1. PURPLE GRATE CAP.
 2. BUBBLER - SEE PLAN.
 3. ROOT WATERING SYSTEM WITH (BASKET WEAVE CANISTER). SEE IRRIGATION LEGEND FOR MANUFACTURER AND MODEL.
 4. FINISH GRADE.
 5. CHECK VALVE.
 6. 3/8" PEA GRAVEL. PLACE IN ROOT WATERING SYSTEM AND 4" WIDTH BY FULL LENGTH OF ROOT WATERING SYSTEM.
 7. PURPLE 1/2" PVC SCH. 80 NIPPLE.
 8. PURPLE 1/2" 90 DEG. ELL.
 9. PURPLE SWING PIPE, 12" WIDTH ASSEMBLY.
 10. PURPLE 1/2" MALE NPT INLET.
 11. PURPLE PVC SCH. 40 TEE OR ELL.
 12. PURPLE LATERAL PIPE. SEE LEGEND.
- NOTE:**
 USE TEFLON TAPE ON ALL MALE PIPE THREADS.

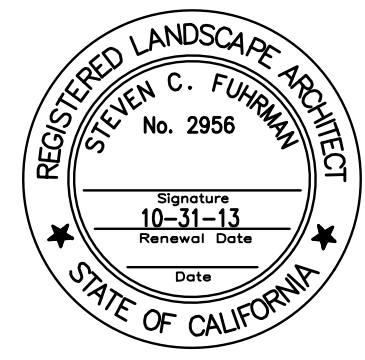
G BUBBLER: ROOT WATER SYSTEM (RECYCLED)
 SCALE: N.T.S.



- CUSTOMFLOW REFERENCE: XX VFD**
- 1 2-1/2" COMPANION FLANGE
 - 2 2-1/2" GALVANIZED TEE (GROOVED)
 - 3 2" BUTTERFLY VALVE-GROOVED CONNECTIONS
 - 4 2-1/2" GALVANIZED SCHEDULE 40 GROOVED (LENGTH AS REQUIRED)
 - 4b 2" GALVANIZED SCHEDULE 40 GROOVED (LENGTH AS REQUIRED)
 - 5 1-1/2" GROOVED 90
 - 6 PUMP: STA-RITE PUMP MODEL JEM143 WITH 3.5" BRONZE IMPELLER, RATED FOR XX GPM AT XX PSI. INCREASE WITH 3 HP, 3-PHASE, 3450 RPM, 230/460 ODP MOTOR.
 - 10 STEEL ENCLOSURE- TWO PIECE STEEL SIZE 48"x 36"x 42"x38". PIVOT TOP, SLANTED ROOF, POWDER COATED GREEN COLOR. ALL STEEL BRACKETS AND HARDWARE DECAL FOR NON-POTABLE WATER!
 - 11 EFECTOR TRANSDUCER PA 3224 0-145 PSI.
 - 12 FUJI, RAPIDPAK, 16.1 AMP VFD, 30 AMP CIRCUIT BREAKER, SINGLE-PHASE INPUT, THREE-PHASE OUTPUT, WITH (2) PUMP START RELAY AND TERMINALS, CONTROLS WITH RELAY-RESET FOR TEMPERATURE SWITCH.
 - 13 LEVEL CONCRETE PAD SIZE 42"x 54", 4" THICK AND 1" ABOVE SURROUNDING GRADE. TOOL EDGES 1/2". NOTE: THE INLET/OUTLET ARE LOCATED ON THE RIGHT SIDE FACING THE FRONT. ALLOW 24" CLEARANCE IN FRONT AND REAR FOR SERVICE ACCESS.
 - 14 2-1/2" CHECK VALVE
 - 15 2-1/2" BUTTERFLY VALVE-GROOVED CONNECTIONS



H BOOSTER PUMP DIAGRAM
 NOT TO SCALE



REVISIONS
 LANDSCAPE REVISIONS
 GENERAL REVISIONS

FEDERATED INDIANS OF GRATON RANCHERIA
 GRATON RANCHERIA CASINO
 BUILD-OUT
 CALIFORNIA

ROHNETT PARK,
 CALIFORNIA

KGA ARCHITECTURE
 9075 West Diablo Drive, Third Floor
 Los Vegas, Nevada 89148
 702.387.8700
 www.kgaarchitecture.com
 AUSTIN

CONSULTANTS:
 DESIGN: FRIEDMATTER GROUP
 HATCH DESIGN GROUP
 CIVIL ENGINEER: RFP CONSULTING
 STRUCTURAL ENGINEER: JOHN A. MARTIN & ASSOCIATES
 MECH. PLUMB. SECT. LOW VOLT. & L.S. ENGINEER: JBA CONSULTING ENGINEERS
 LANDSCAPE ARCHITECT: FURKMAN LEAMY LAND GROUP

PROJECT:
 SITE AND UNDERGROUND IRRIGATION PACKAGE
 SHEET CONTENTS:
 LANDSCAPE IRRIGATION DETAILS
 DATE: MAY 14, 2012
 JOB NO.: TI-908
 SHEET: