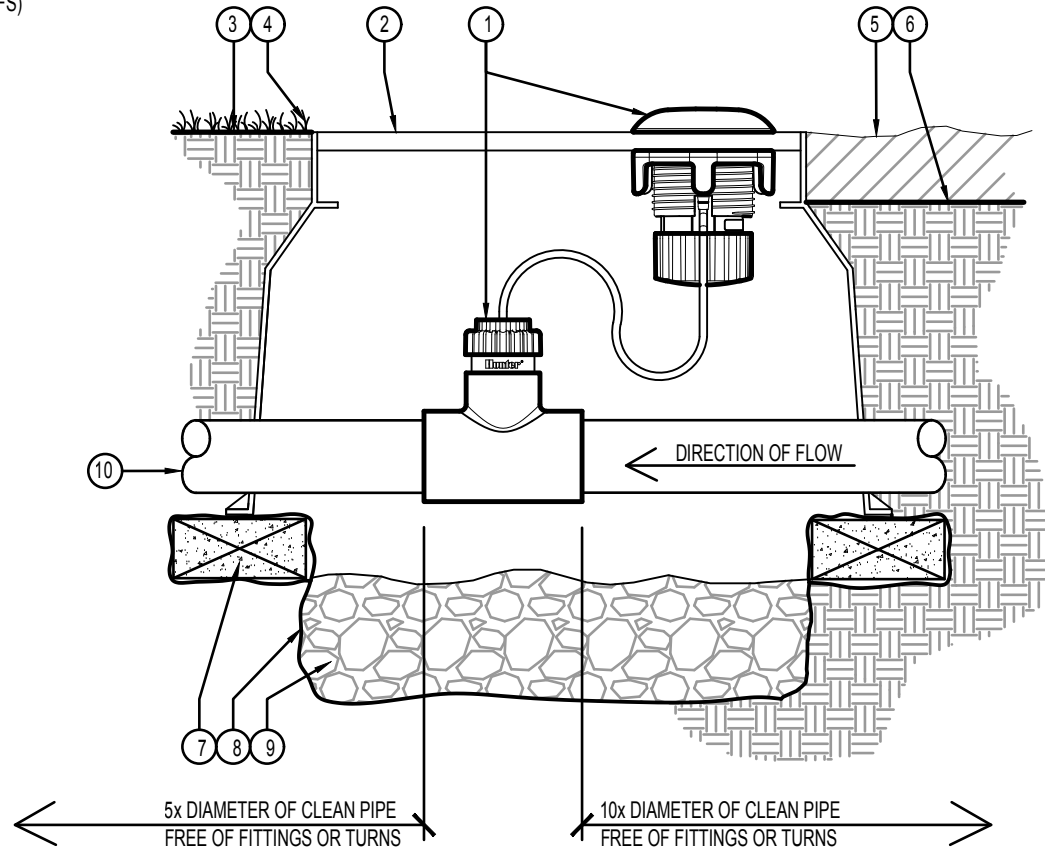


# NOTE:

CONTRACTOR TO CUT 3-1/4" (8.255 CM) DIA. HOLE TO TOP OF VALVE BOX TO ALLOW FOR TRANSMITTER INSTALLATION

## LEGEND:

- ① HUNTER WIRELESS FLOW SENSOR AND TRANSMITTER (WFS) PER PLAN
- ② IRRIGATION VALVE BOX PER PLAN  
HEAT STAMP LID WITH 'FS' IN 2" (5 CM) LETTERS
- ③ FINISHED GRADE IN TURF
- ④ ADJACENT TURF (PER PLAN)
- ⑤ ADJACENT MULCH (PER PLAN)
- ⑥ FINISHED GRADE IN PLANTER BED
- ⑦ BRICK SUPPORTS (4)
- ⑧ FILTER FABRIC - WRAP TWICE AROUND BRICK SUPPORTS
- ⑨ 3/4" WASHED GRAVEL - 4" (10 CM) MIN. DEPTH
- ⑩ IRRIGATION LATERAL



## INSTALLATION DIAGRAM:

